

# Factors Affecting Productivity of Wheat Production in Horo District of Oromia Region, Ethiopia

Hika Wana<sup>1</sup> Oliyad Sori<sup>2</sup>

1.Wollega university, department of agricultural economics, shambu campus, P.O.Box 38

2.Wollega University, department of agribusiness and value chain management, Shambu campus. P.O.Box 38

## Abstract

The study was aimed to productivity of wheat production and identify factors affecting them in Horo district of Horoguduru Wollega Zone, Oromia Region, Ethiopia. The study was based on cross-sectional data collected in 2016/17 production season from 124 randomly selected farm households. Stochastic production frontier model was used to estimate technical efficiency levels and used to identify factors affecting efficiency levels. Accordingly, the mean technical efficiency of sample household's was 63.9%.The results indicated that there was substantial amount of in efficiency in wheat production in the study area. Land, seed, DAP and chemical were the variables that positively affected the production of wheat. Results of the factor model revealed that family size, experience in wheat production and extension contact positively and significantly affected technical efficiency. Total cultivated land had a significant negative effect on technical efficiency. Results indicate that there is a room to increase the efficiency in wheat production of the study area. Therefore, government authorities and other concerned bodies should take into consideration the above mentioned socio economic and institutional factors to improve the productivity of wheat in the study area.

**Keywords:** Horo district, technical efficiency, wheat, stochastic

**DOI:** 10.7176/DCS/10-2-05

**Publication date:** February 29<sup>th</sup> 2020

## INTRODUCTION

Agricultural sector is a cornerstone of many developing countries including Ethiopia, in promoting economic growth and development of the economy. It accounts 46% of GDP, over 90% of the foreign exchange earnings, 83% of employment generation and providing 70% raw material for the industries in the country (EPOSPEA, 2015). The livelihood of about 90% of the poor is fully or partly dependent on this sector (Yu *et al.*, 2011). Besides, 95% outputs obtained from the sector was mostly depends on rain-fed production system that dominated by smallholders (MoARD, 2011). Thus, it is not surprising that policy action in Ethiopia is largely based on influencing the dynamism of the agricultural sector.

The export diversification prospect is mainly focused on agricultural products and this would also bolster the contribution of agriculture for the export sector. Moreover, agriculture contributes about 50% of the gross domestic product of the country. Befkadu and Berhanu (2000) indicated that the performance of the Ethiopian macro economy is highly correlated with the performance of the agricultural sector. In the years that nature generously provided the rains in the appropriate times, we also see a reasonably good overall macroeconomic performance.

All these facts direct development policies, strategies and objectives towards improving the agricultural sector and the rural population. In view of this various efforts were made by the preceding regimes. However, the sector could not produce enough food to support the rapidly increasing population. Amare (1998) by fitting exponential growth function to the production of major crops for the year 1979/80-1993/94 found that the average growth rate was 0.3% per annum. Nevertheless, the population is reported to be increasing at about 3% per annum (Amare, 1998). Consequently, food aid is increasing at 16.2% per annum. Therefore; the country's dependence on external food aid is growing at an alarming and rapid rate. The study zone that has been one of the sources of grain crops for other areas is now becoming dependent on external aid.

In fact, CSA (2015 and 2016) reported that there was an increase in the total production. However, increment in production of wheat from 39,251,741.35 quintals in 2013/14 to 42,315,887.35 in 2014/15 was not attributed to productivity improvement alone. There was also an increase in area of cultivated land in the same years.

If the existing production system is not efficient, introduction of new technology could not bring the expected improvements in the productivity of wheat and other crops. Given the existing technology, improvements in the level of technical efficiency will enable farmers to produce the maximum possible output from a given level of inputs. Hence improvement in the level of technical efficiency will increase productivity. Theoretically, introducing modern technologies can increase agricultural output. However, according to Tarkamani and Hardarkar, (1996, cited in Getu, 1997) in areas where there is inefficiency, trying to increase a new technology may not have the expected impact and "*there is a danger of trying to rediscover the wheel*" if the existing knowledge is not efficient.

Despite of the fact that Horo district has high potential for wheat production, the yield has been 13 quintals per hectare which is below regional average in 2016/17 production season. Its production only increased by .05% and 0.02% in 2016 and 2017, respectively (HDARDO, 2017). This shows as production and productivity of the crop remain in a question for a long period of time in Ethiopia in general and in study area, Horo in particular.

Low production and productivity are the characteristics of several wheat farmers in the country, which needs the specific focus of researchers to measure technical efficiency of wheat and identify factors influencing productivity of wheat. Therefore, this study focuses on estimating level of efficiency and identifies factors that distort productivity of wheat in the study area. Furthermore, there is no standardized empirical research which has been conducted on technical efficiency of wheat in this specific area so far. Cognizant of these facts, this study was undertaken to narrow the wide research gap that has been observed currently on technical efficiency of wheat in the study area.

## METHODOLOGY

### Description of the Study Area

Horro District is one of the Districts found in HorroGuduruWellega Zone and located at center part of zone. Today this district is sub-divided into 11 farmer associations for its administrative purpose. Shambu is the capital town of the district located at the center of the zone and 314km from capital town of Oromia called Finfinne. Shambu as an administrative center was established in 1911 Ethiopian calendar. Horro is one of the districts found in Horro Guduru Wellega. It is bounded from the east AbayComman District, north Jardagajarte District and Amhara region, west Abe Dongoro and GudayaBila District and South JimmaGanati&Jimma Rare District.

According to 2007 Population and Housing Census result, the total population of the district was estimated to be 90,665 in 2005 EC. The rural population was 85,758 (of which male 42,650 and female 43,107 while the urban population was 4,907 (of which male 2,450 and 2,457 females).

The altitude range of the district is 2500 & 1350 above and below sea level respectively. The mean annual rain fall of the woreda is about 2250mm and the mean daily temperature oscillates between 15-27 degree Celsius. Livestock production is the main branch of agricultural activity and part of economic base of the country. Ethiopia in general and Oromiya in particular is known for its animal rearing especially for use of labor: Ox, horse, donkey and camel and for meat, milk and milk products. The most common domestic animals in Horro district are cattle, goats, sheep, horses, mules, donkeys and poultry.

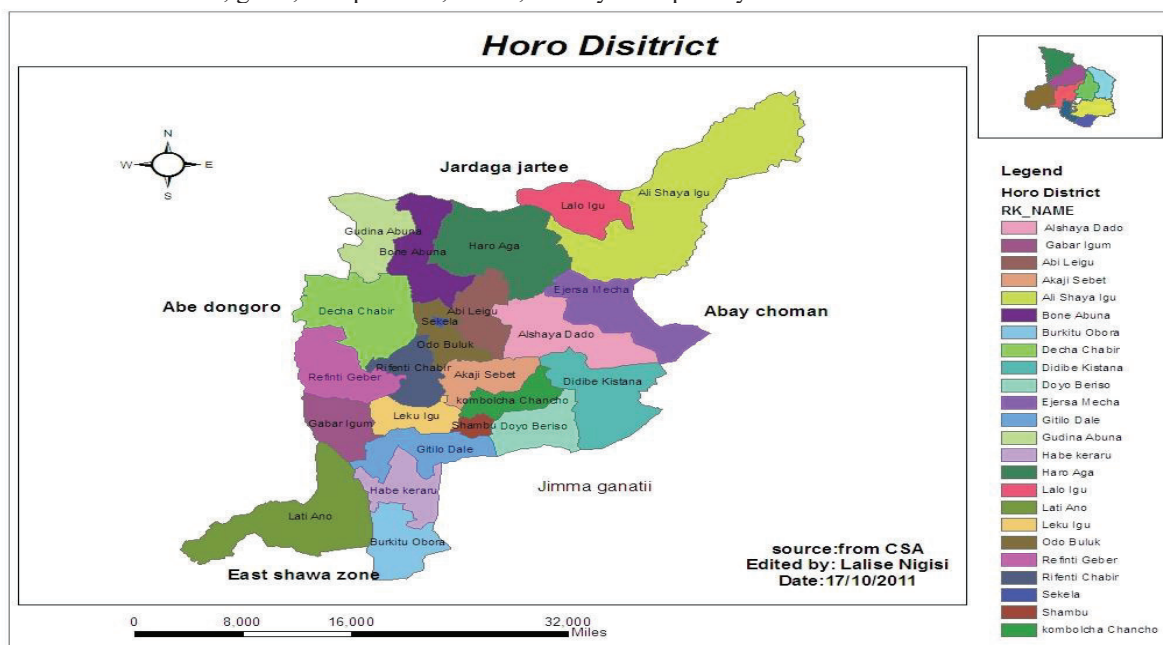


Figure 1: Map of the study area

### Types, Sources and Methods of Data Collection

For this study quantitative data were collected mainly. It includes The Factors affecting efficiency, Age of a household head, Education of the household head, Family size, Experience in wheat production, Distance of wheat plot from homestead, Livestock holding, Total cultivated land, and The Soil fertility status. Data source for this study was both primary and secondary data. Primary data was collected using formal survey.

**Primary data:** primary source was smallholder farmers randomly selected from rural kebeles in the district

before the beginning of data gathering using interview schedule, training was given to enumerators. Before data collection, the questionnaire was pre-tested on five farmers to evaluate the appropriateness of the design, clarity and interpretation of the questions, relevance of the questions and time taken for an interview. Hence, appropriate modifications and corrections were made on the questionnaire. These enumerators collected the required data from the producer farmers using a pre-tested interview. Hence, appropriate modifications and corrections were made on the questionnaire. These enumerators collected the required data from the producer farmers using a pre-tested interview schedule. To collect primary data, a semi structured questionnaire was prepared and used.

**Secondary data:** it was collected by reviewing documents of secondary sources namely, both zonal and district's office of agriculture and rural development; offices published and unpublished thesis documents, books of Central Statistical Authority (CSA), and books of Ministry of Agriculture.

**Sample Size and Sampling Technique**

Horo district was purposively selected for the study because of the presence of large number of wheat producing farmers and its extent of production. In order to select representative sample technical efficiency in wheat production, this study implemented two stage sampling procedure.

**In the first stage,** out of 11 wheat producing kebeles in Horo district, a total of 3, namely kombolcha-chancho, Gitilo-dale and Akaji-sabat were selected randomly.

**In the second stage,** using the list of the farmers from the sampled kebeles, 124 sampled respondents were selected randomly based on proportional to the population size of the selected kebeles.

**Sample size determination for producers**

The sample keeping the proportion to each kebeles were selected by using Yamane (1967) sample size formula.

$$n = \frac{N}{1 + N(e^2)} \tag{3.1}$$

Where, n is sample size, N is number of Household and e is the desired level of precision. By taking e as 9%, and the total household of 5703 the sample size was 124.

$$n = \frac{5703}{1 + 5703(.09^2)} = 124$$

**Method of Data Analysis**

Two types of analysis, namely descriptive and econometric methods were used to meet the objective of the study.

**Descriptive Analysis**

This method of data analysis refers to the use of ratios, percentages, means, and standard deviations in the process of assessing the Wheat production and its productivity and also factors affecting efficiency in the study area.

**Econometric model**

Wheat production in particular and crop production in general in the study area are likely to be affected by random shocks such as weather, pest infestation and drought. In addition, measurement errors are likely to be high. The difference in output as a result of these random shocks and measurement errors are not due to operator's inefficiency or misallocation of resources. In such a condition where random shocks and measurement errors are high a model that accounts for the effect of noise is more appropriate to choose. Thus a stochastic frontier model was selected in the analysis of technical efficiency of wheat production in Horo district. This was due to the fact that one of the appealing features of SPF is that it accounts for random shocks and measurement errors. Therefore the general stochastic frontier model developed independently by Aigner *et al.* (1977) and Meeusen and ven den Broeck (1977) in which an additional random error, v added to the non-negative random variable,  $u_i$ . Taking natural logarithms, the model becomes:

$$\ln y_i = \beta_0 + \ln x_i \beta - u_i \tag{3.2}$$

Where:  $\ln y_i$  is the natural logarithm of the output of the  $i^{th}$  firm;

$\ln x_i$  is the natural logarithms of inputs;

$\beta$  is a column vector of the unknown parameters to be estimated;

$u_i$  is a non-negative random variable associated with technical inefficiency, representing the shortfall of actual output from its maximum possible value. For this study Cobb-Douglas production function was used. In similar studies the model is widely used (Ananeani *et al.* 2011). In the second stage Technical efficiency score regressed on explanatory variable (factors affecting efficiency) and it is specified in abstract term as specified below

$$TE = \ln A + \alpha_1 \ln x_1 + \alpha_2 \ln x_2 + \dots + \alpha_n \ln x_n + \beta_1 D_1 + \beta_2 D_2 + \dots + \beta_n D_n + u_i$$

Where:

TE=Technical efficiency score of household

A=the intercept that reveals combined impact of production

$X_1, X_2, \dots, X_n$ : are continuous explanatory variables

$D_1, D_2, \dots, D_n$ : dummy variables

$\alpha_1, \alpha_2, \dots, \alpha_n$ : are coefficient/parameters of explanatory variables

$\beta_1, \beta_2, \dots, \beta_n$ : are coefficient /parameters of dummy variables

Parameters:  $\alpha_1, \alpha_2, \dots, \alpha_n$  and  $\beta_1, \beta_2, \dots, \beta_n$  was estimated by MLHM (Maximum likelihood method) methodology. This stochastic production function was estimated by using maximum likelihood method. As far as the functional form is concerned, Cobb-Douglas and Trans log are most appropriate. Therefore Cobb-Douglas functional form was used in empirical estimation of frontier model. According to Aigner *et al.* (1977), the symmetric component ( $v_i$ ) is assumed to be independently and identically distributed as  $N(0, \sigma_v^2)$ . On the other hand,  $u_i$  is non-negative truncated half normal random variable with zero mean and constant variance,  $\sigma_u^2$ .

Aigner *et al.* (1977) proposed the log likelihood function for the model in equation (3.2) assuming half normal distribution for the technical inefficiency effects ( $u_i$ ). They expressed the likelihood function using  $\lambda$  parameterization, where  $\lambda$  is the ratio of the standard errors of the non-symmetric to symmetric error term (i.e.  $\lambda = \sigma_u/\sigma_v$ ). However, Battese and Corra (1977) proposed that the  $\gamma$  parameterization, where  $\gamma = \sigma_u^2 / (\sigma_v^2 + \sigma_u^2)$ , to be used instead of  $\lambda$ . The reason is that  $\lambda$  could be any non-negative value while  $\gamma$  ranges from zero to one and better measures the distance between the frontier output and the observed level of output resulting from technical inefficiency.

However, there is an association between  $\gamma$  and  $\lambda$ . According to Bravo and Pinheiro (1997) gamma ( $\gamma$ ) can be formulated as:

$$\gamma = \lambda^2 / (1 + \lambda^2) \tag{3.3}$$

Hence, by following Battese and Corra (1977) the log likelihood function of the model is specified as:

$$\ln(L) = -\frac{N}{2} \left( \ln \left( \frac{\pi}{2} \right) + \ln \sigma^2 \right) + \sum_{i=1}^N \ln \left[ 1 - \Phi \left( \frac{\varepsilon_i \sqrt{\gamma}}{\sigma^2} \sqrt{\frac{\gamma}{1-\gamma}} \right) \right] - \frac{1}{2\sigma^2} \sum_{i=1}^N \varepsilon_i^2 \tag{3.4}$$

Where  $\varepsilon_i = \ln Y_i - \ln X_i \beta$  is the residual of (3.3);  $N$  is the number of observations;  $\Phi(\cdot)$  is the standard normal distribution;  $\sigma^2 = \sigma_v^2 + \sigma_u^2$ , and  $\gamma = \sigma_u^2 / \sigma^2$  are variance parameters.

The minimization of (3.4) with respect to  $\beta$ ,  $\sigma^2$  and  $\gamma$  and solving the resulting partial derivatives simultaneously, produces the ML estimates of  $\beta$ ,  $\sigma^2$  and  $\gamma$ . The  $\gamma$  parameter is used to test whether the technical inefficiency affects output or not. Likewise, the significance of  $\sigma^2$  indicates whether the conventional average production function adequately represent the data or not.

**Elasticity of production:** It is the measure the effect of change in the factor input output. In Cobb-Douglas production function, the regression coefficients stand for the elasticity's of the individual resources (land, labor, seed, fertilizer, chemicals and oxen). The sum of these parameters indicates the nature of returns to scale, i.e., if the sum is equal to 1, it indicates constant returns to scale, if it is greater than 1, it shows increasing returns to scale and if sum is less than 1 it implies that decreasing returns to scale.

## RESULT AND DISCUSSION

This section is divided into two main sections: descriptive statistics and econometric (stochastic frontier) results. The first section reports the descriptive results to describe Technical efficiency variables used in the study. The second part of this section presents the econometric results of the Cobb-Douglas stochastic production function.

### Descriptive Analysis Results

#### Household characteristics

The survey result showed that the total numbers of married, widowed, divorced and sample households during the survey period were 78.23%, 3.23%, 6.45% and 12.1% respectively. About 19.35% of the sample respondents were female headed and 80.645% were male headed. The average family size of the sample households was found to be 5.47, with minimum of 1 and maximum of 11. The average age of sample household heads was 36.17 years with maximum of 75 years and a minimum of 18 years.

Table 1. Sex and marital status of sample households

Marital status	Number of farmers		Percent
Single	15		12.10
Divorced	8		6.45
Married	97		78.23
Widowed	4		3.23
<hr/>			
Sex			
Male	100		80.645
Female	24		19.355

Source: Own survey (2017)

From the total of sample household heads, 17.35% were illiterate, while the remaining 82.65% had different levels of education, ranging from grade one to completion of secondary school. The maximum number of school years completed by the household heads was eleven years. About 27.42%, 45.96% and 7.26% of sample respondents attended 1 to 4, 5 to 8 and 9 to eleven level of education, respectively.

### Farming experience

There is a wide range of farming experience in the study area, varying from 2 to 55 years. The average farming experience of sample households was 18.06 years. The average wheat production experience was 5.87 years with a minimum of 1 year and maximum of 9 years. The average time to reach their farm was about 40.92 walking minutes.

### Livestock ownership

Livestock is an important component of the farming system practiced by the farmers, and it is an important asset for rural households in Horo districts of Horoguduru Wollega Zone in Oromia regional state and serves multiple purposes. Cattle provide draught power for crop cultivation, manure for household fuel, organic fertilizer, meat, milk and other products like hides and skin. Donkey is used for transportation. Farmers in the study area use oxen to undertake different agronomic practices, out of which plough and threshing were the major once.

Table 2 Distribution of oxen ownership among sample households

Oxen ownership category	Sample households	
	Number	Percent
None	18	14.52
1 ox	23	18.55
2 oxen	57	45.97
3 oxen	7	5.65
4 oxen	11	8.87
5 and more oxen	8	6.46

Source: Own survey (2017)

Conventionally, land preparation is done using a pair of oxen; as a result 33.7% of the sample households cannot independently plough their farm using own oxen. Hence, as an alternative, they will go for oxen exchange arrangements or rent-in from others. Oxen ownership among farmers in the study area was ranging from zero to seven. Generally, 45.97% of sample households in the study area have had a pair of oxen. Actually in the study area, small ruminants are used to meet immediate cash need of the households and also for meat production both for cash and home consumption especially during holidays. Poultry is kept for egg and meat production both for cash and home consumption. In most cases farmers kept oxen as a source of draught power, cows are important sources of milk and milk products for consumption and satisfy immediate cash through the sale of butter. To make the unit of measurement uniform conversion factor developed by Storck, *et al* (1991) as cited in Arega and Rashid (2005) was used to convert the herd size to in TLU.

Table 3. Distribution of Livestock holding among sample households

TLU range	Total sample households	
	Frequency	Percent
0.00 – 2.00	91	73.39
2.01 – 4.00	18	14.52
4.01 – 6.00	9	7.258
6.01 – 8.00	2	1.613
≥ 8.01	4	3.226

Source: Own survey (2017)

Table 5 shows that 73.39% of the total sample households have had less than or equal to two TLU. Only 26.61% of the total sample households have had greater than or equal to two TLU of which 21.778% ranges between two and six TLU. This means, on average, only 4.84% of the households have had greater than six TLU. Oxen ownership of sample household ranges from 0 to 7 with a mean and standard deviation of 1.99 and 1.44 respectively, while the total number of TLU ranges from 0 to 10.55 with a mean and standard deviation of 1.67 and 2.19, respectively.

### Crop type and production

The farming system of the district is mixed crop-livestock where crop plays the major role in the households' income. The major crops grown in the area include wheat, maize, sorghum, and nug. The study area is characterized by cereal-based cropping system in which maize dominates. Barley is also an important crop next to wheat. Regarding the proportion of the area allocated for crops, most respondents had allocated more than half of their total land for the production of Wheat and maize in 2016/17 production season.



Table 4. Major crops produced by sample households during 2016/17 production year

Crop type	Production area (ha)					Production (Qt)			
	N	Min	Max	Mean	Std.	Min	Max	Mean	Std
Wheat	124	0.125	3.0	1.012	0.65	0.5	19	13.54	3.74
Maize	81	0.25	2.0	0.975	0.41	8	80	34.5	0.82
Sorghum	101	0.125	1.0	0.259	0.25	1	10.5	3.36	0.41

Source: Own survey (2017)

#### Resource use

Obviously, farmers use different combination of inputs, such as land, fertilizer (organic and/or inorganic), seed (improved and/or local), Chemical (herbicide and pesticide), labor and draft powers in the production process. All sample respondents use non-selective herbicide chemical (round up) on their Wheat field because of frequent occurrence of weed infestation. Almost all the sample households use their own seed which were originally distributed by district bureau of agriculture and saved from previous harvest. Family labor, 'debo' and Hired labor were the main sources of labor input for major farming activities like plowing, weeding and harvesting in the production of Wheat.

#### Off/non-farm activities

Farmers in the study area were engaged in various off/non-farm activities other than the main farming activities during the survey year. This may be due to the meager returns they obtain from the agricultural activities. The off/non-farm activities in which the farmers were engaged include selling local drink, butchery, handcrafts, sand carpenter and retailer. The income they desperately need to obtain from such off/non-farm activities supplements the low income usually obtained from their farming main stay. About 45.2% of the sample farmers reported that they participated in different off/non-farm activities, while the remaining 54.8% responded that they did not participate in any off/non-farm activities. This shows that, almost more than half of the sample farmers in the study area highly dependent on agriculture.

#### Institutional support

##### Extension contact

In order to give effective extension service to the farmers, the region assigned three DAs in each kebele. This can help the farmers to know modern agricultural technologies. The concept of agricultural growth suggests two channels of impacts of extension in agriculture. The first channel is to assist the destination of new technologies to farmers as a way of increasing agricultural productivity thus speeding up adoption or the use of new technologies and practices. The second channel is the role of extension in improving human capital and management skills of farmers to improve their level of technical efficiency (O'Neill *et al.*, 2001). Different extension programs have been implemented to support farmers and it is well known that there is a change in the use of agricultural technologies such as fertilizer and improved seeds over the past 15 years. This would not assure improvement in efficiency. There were no improved seeds and the farmers use only local Wollega wheat with non-selective chemical fertilizer in the study area.

##### Credit and saving services

Oromia credit and saving Share Company is the only formal source of credit in the study area. It provides credit to individual farmers under group collateral system. Out of the total 69.35% sample households who had credit access, 30.64% of them get their credit from OCSSCO while the other 38.71% respondents get it from informal sources like relatives and neighbors. The households use the credit to purchase inputs, for medication and fulfillment of other basic needs.

Table 5. Distribution of credit source among sample households

Credit source	Total Sample Households	
	Frequency	Percent
Oromia Credit and saving share company	38	30.64
Relatives and neighbors	48	38.71
Total	86	69.35

Source: Own survey (2017)

#### Descriptive statistics of variables used in the stochastic frontier model

The production function for this study was estimated using six input variables. On average farmers produced 13.54 quintals of wheat, which is the dependent variable in the production function. The land allocated for wheat production, by the sample households during the survey period, ranges from 0.125 to 3 ha with average of 0.95 ha. The average amount of seed that sample households' used was 26.8 Kg. Like other inputs human and animal labor inputs were also decisive, given the traditional farming system in the study area.

Table 6. Descriptive statistics of variables used to estimate the production function

Variable description	Minimum	Maximum	Mean	Std. deviation
Output (Qt)	3	54	13.54	9.52
Land (ha)	0.125	3	0.95	0.82
Seed (Kg)	6	100	26.8	17.9
DAP (Kg)	16	200	44.5	24.20
Labor (MDs)	12.5	159.06	50.11	28.74
Chemical (Lts)	0.375	9	2.85	1.48
Oxen (days)	1.875	40.375	12.26	7.76

Source: Own survey (2017)

Sample households, on average, use 50.11 man equivalent labor and 12.26 oxen days for the production of wheat during 2016/17 production season. In the study area farmers use only DAP for wheat production. Hence, on average farmers used 44.5 Kg of DAP. The other very important variable is chemicals. The average amount of chemicals that sample households used was 2.85 Liter during production period (Table 6)

#### Estimated observed and potential (frontier) level of output

The difference between the actual level and the frontier level of output was computed by estimating the individual and the mean level of frontier output. Using the values of the actual output obtained and the predicted technical efficiency indices, the potential output was estimated for each sample farm households. The mean levels of the actual and frontier output during the production year were 13.54Qt and 26.7Qt/ha, with the standard error of 3.74 and 4.25, respectively. Moreover, paired sample t-test was used on the actual and potential output to compare the difference in the amount of yield between two scenarios. There was a significant difference between potential output and actual output. The mean difference of the actual and the potential output was found to be statistically significant at 1% probability level.

Table 7. Comparison of estimated actual and potential output of sample households

Potential (frontier) Output			Actual (observed) Output		
Efficiency category	N	Mean	Std. Deviation	Mean	Std. Deviation
0.3 - 0.6999	37	6.5	4.27	3.514	3.13
0.7 - 0.7999	43	7.15	4.26	4.66	3.07
0.8 - 0.8999	23	7.166	3.86	5.92	3.5
0.9 - 0.9999	21	8.48	4.58	8.1	4.46
Overall	124	26.7	4.25	13.54	3.74
Paired sample t-test					t = 13

Source; own survey 2017

#### Econometric Result

##### Estimation of production and cost functions

Technical efficiency levels in wheat production in Horo districts were estimated using stochastic frontier production function (SFP). Input variables such as area under wheat cultivation (Land) (ha), oxen (days), labor (MD), quantity of seed (Kg), DAP (Kg) and amount of chemical in liters were used in the model for estimating technical efficiency. These results together with the standard OLS estimates of the average production function are presented below.

Table 8. MLE results of the production frontier for the sample households

Variable	Coefficient	Standard error	p-value
Constant	0.133	0.44	0.54
Land	0.04**	0.022	0.04
Seed	0.66***	0.042	0.00
Dap	0.22***	0.034	0.00
Oxen	0.002	0.018	0.67
Labor	0.024	0.22	0.34
Chemical	0.144***	0.04	0.001
Diagnostic statistics			
Gamma ( $\gamma$ )	0.88***		
Sigma square	0.35***	0.072	
Lamda	2.88***	0.11	
log_likelihood	161.11		

Note: \*\* and \*\*\* refers to 5% and 1% significance level, respectively.

Source: Own computation (2017)

From the total of six variables considered in the production function, three (Land, seed, Dap and Chemical)

had positive sign and significant effect in explaining the variation in wheat output among farmers and are significant variables in shifting the frontier output to the right or moving along the frontier. This indicated that a unit increase of these variables; increase the level of wheat output. The coefficients of the production function are interpreted as elasticity. Hence, elasticity of output to land (0.04) suggests that 1% increase in size of land will result in 0.04% increase in wheat production, keeping other factors constant. Alternatively, this indicates wheat production was responsive to land, seed, DAP and chemical in the study area. The productions function estimated from stochastic frontier model results:

$$\ln Y = 0.13 + 0.04 \ln(\text{land}) + 0.66 \ln(\text{seed}) + 0.22 \ln(\text{DAP}) + 0.26 \ln(\text{labor}) + 0.21 \ln(\text{Oxen}) + 0.144 \ln(\text{Chemical}) + \varepsilon_i$$

The diagnostic statistics of inefficiency component reveals that sigma squared ( $\sigma^2$ ) was 0.35 and statistically significant at 1 percent this indicates goodness of fit, and the correctness of the distributional form assumed for the composite error term. Using the formula in equation (3.3) the gamma ( $\gamma$ ) was 0.88 which was high enough and significant at 1% level. It gives an indication that the unexplained variations in output are the major sources of random errors. It also shows that about 88 percent of the variations in output of wheat farmers are caused by technical inefficiency. It also confirms the presence of the one sided error component in the model; this rendering the use of ordinary least squares (OLS) estimation techniques inadequate in representing the data.

The returns to scale analysis can serve as a measure of total factor productivity (Ajibefun, 2002). The scale coefficient was calculated to be 1.09, indicating increasing returns to scale (Table 14). This implies that there is potential for wheat producers to continue to expand their production because they are in the stage I of the production surface, where resource use and production is believed to be inefficient. In other words, a one percent increase in all inputs proportionally will increase the total production by 1.09%. This result is consistent with Hika (2016), Ermias *et al.* (2015) and DOO (2013).

Table 9. Elasticity and returns to scale of the parameters in the production function

Variables	Elasticity
Land	0.044
Seed	0.661
DAP	0.221
Labor	0.024
Oxen	0.002
Chemical	0.144
Return to scale	1.09

Source: Own computation (2017)

#### Estimation of efficiency scores

The results of the efficiency scores indicate that there were wide ranges of differences in TE among wheat producer farmers. The mean TE of sample households during the survey period was 63.9%. The TE among the households ranges from 35.4% to 99.6%, with standard deviation of 0.187. This result is consistent with study of Jema (2008), Wondimu (2010), Ermias *et al.* (2015), mustefa (2014) and Hika (2016)

Table 10. Descriptive statistics of efficiency measures

Variable	Obs	Mean	Std. Dev.	Min	Max
TE	124	0.6397	0.187	0.354	0.996

Source: Own computation (2017)

The results in Table 16 indicate that the average level of TE was 63.9% which reveals that farmers on average could decrease inputs (land, DAP, Oxen, labor, seed and chemical) by 36.1% to get the output they are currently getting, if they use inputs efficiently.



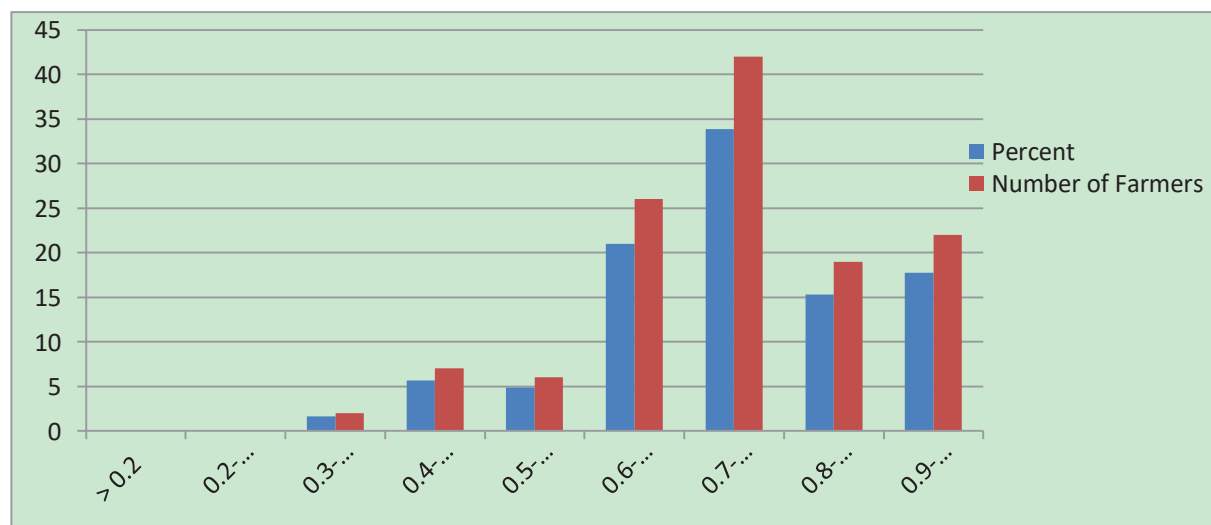


Figure 2. Distribution of technical efficiency scores  
 Source: Own computation (2017)

The distribution of the TE scores showed that the majority (more than 66.93%) of the sample households had TE score of greater than 70% (Figure 6). But there were also some households whose TE levels were limited to the range 20 to 40%. Households in this group have a room to enhance their wheat production at least by 70%, on average. Out of the total sample households, only 17.74% had TE greater than 90%. This implies that about 82.26% of the households can increase their production at least by 10%.

#### Determinants of efficiencies in sample farmers

After determining the presence of efficiency differential among farmers and measuring the levels of their efficiency, finding out factors causing efficiency differentials among farmers was the next most important objective of this study. To see this, the technical efficiency estimates derived from the model were regressed on socio-economic and institutional variables that explain the variations in efficiency across farm households using stochastic frontier model. The estimates of the model showed that among 11 variables used in the analysis, family size, total cultivated land, extension contact, and experience in wheat production were found to be statistically significant in affecting the level of TE of farmers.

Table 11. Stochastic model estimates for different efficiency measures

Variable	Coefficient	Standard error	P> [Z]
Constant	0.28	0.177	0.000
Age	0.003	0.002	0.124
Education level	0.002	0.012	0.577
Wheat exp	0.027***	0.009	0.007
Family size	0.03***	0.009	0.002
Total cult	-.011***	0.0036	0.001
Proximity	0.006	0.008	0.470
Nonfarm income	-.0031	0.0046	0.505
Soil fertility	0.0067	0.0047	0.153
Extension cont	0.0422 ***	0.0065	0.000
TLU	0.0012	0.0013	0.357
Credit access	0.0065	0.005	0.196

Note: \*\* and \*\*\* refers to 5% and 1% significance level, respectively.

Source: Own computation (2017)

The discussion about each significant variable are presented as follows:

**Family size:** The coefficient of family size for technical efficiency is positive and statistically significant at 1 percent significance level. The result is similar to the previous expectation that Farmers those having large family size are more efficient than farmers having small family size, because; family labor is the main input in crop production as the farmer has large family size he would manage crop plots on time and May able to use appropriate input combinations. This is in line with the findings of Mohammed *et al.* (2009), Essa (2011), Mustefa (2014) and Hika (2016).

**Wheat production experience:** The coefficient of experience is positive as expected for TE and significant at 1 percent. This indicated that increased farming experience may lead to better assessment of importance and complexities of good farming decision, including efficient use of inputs.

**Total cultivated land:** Total cultivated or farm land was found to have significant and negative impact on TE. This might be due to the fact that the increased land size reduces technical efficiency by creating shortage of family labor, management and other resources that should have been available at the same time for wheat production but on the different product like noug, maize and sorghum in the study area. This result is in line with the results of Coelliet *al.* (2005), Jema (2008), Hika (2016) and OkezieChukwukere (2012).

**Extension contact:** extension contact was found to have a positive and significant relationship with technical efficiency of farmers. This might be due to the fact that the involvement of extension workers in supporting and advising through providing good inputs which is appropriate for production of wheat that increase productivity and efficiency score in the long run. The result is consistent with Jema (2008) and Ermiaset *al.*(2015).

## SUMMARY AND CONCLUSION

Agricultural sector in Ethiopia is characterized by its poor performance, whereas the population of the country, which to a large extent depends on agriculture, is growing at a faster rate. This necessitates seeking for a means to increase agricultural productivity of smallholder farmers, the dominant producers, which could either be met through improving the state of technology or enhancing the efficiency of producers. Alternatively, productivity growth may attribute to either technological progress or efficiency improvement. Improving efficiency of the farmer plays a great role in increasing productivity, given the current state of technology. This study analyzed the technical efficiency and factors that explain the variation in efficiency among wheat producer farmers in Horo district of Horo-guduru wollega zone, Oromia, Ethiopia.

In this study both primary and secondary data were used. Primary data were collected through household survey from a sample of 124 households using a semi-structured questionnaire. Secondary data were collected from relevant sources to supplement the primary data. Data analysis was carried out using descriptive statistics and econometric techniques.

Result of the Cobb Douglas production function indicated that Land, seed, DAP and chemical were limiting constraints, with positive sign as expected. The positive coefficients of these variables indicate that, increased use of these inputs will increase the production level to greater extent. The average TE, value was 63.9%. This implies that farmers can increase their wheat production on average by 36.1% if they were technically efficient..

In the other part of the analysis, relationships between TE and various variables that were expected to have effect on farm efficiency were examined. This was relied on SPF regression techniques, where TE was expressed as functions of 11 explanatory variables. Among them, family size, experience in wheat production and extension contact positively and significantly affected TE. But total cultivated land had negatively significant impact on TE. These factors had important policy implications to alleviate the existing level of technical inefficiency of farmers in production of wheat.

An important conclusion stemming from the analysis of the efficiency of wheat production is that, there exists a considerable room to enhance the level of technical efficiency of Wheat producer farmers. The implication is that, there will be considerable gain in production level and dissemination of agricultural technologies is coupled with improving the existing level of efficiency. Moreover, the study contributes to improve farm revenue, welfare and generally helps agricultural as well as economic development.

## RECOMMENDATIONS

The policy implications of this analysis are that efficiency estimates indicate both the distribution of the farmers' efficiency and its socio-economic determinants. Thus, the results of the study give information to policy makers on how to improve farm level efficiency of wheat production and identify the determinants for specific efficiency types. The study results revealed that there is a considerable variability in all efficiencies and efficiency score of sample household in the production of wheat in the study area. This indicated that in the long run improving the existing level of technical efficiency of farmers alone may not lead to significant increment in the level of wheat. So in the long run it needs attention to introduce other best alternative farming practices and improved technologies in order to change the lives of farmers. The policy makers should give due emphasis to increase the level of efficiencies. This is because the use of improved technologies is expensive since it requires large capital. Thus, the following policy recommendations are forwarded based on the result of the study.

Family size was very important factor that contributed positively to the improvement of technical efficiency of wheat. So, development agent and Ethiopian government should give more attention to provide good training on how to allocate family labor on production that increase wheat productivity in the study area.

Total cultivated land affect technical efficiency of farmers negatively. Therefore, development programs agents of the study area should give due emphasis to improve and maintain wheat productivity through awareness creation on time and budget allocation for inputs and introduction of technologies so that the efficiency of the farmers increases.

The result of the finding also indicated that extension contact was found to affect technical efficiency of wheat producer positively. Despite the justification given by this study, it needs further support to encourage

development agent in order to increase productivity wheat in the study area.

Experience in wheat production was found to affect technical efficiency positively. This indicates that increased farming experience may lead to better assessment of importance and complexities of good farming decision, including efficient use of inputs. Thus, the government should facilitate the infrastructure (especially road) to improve the market network of wheat producer which encourages the farmers to produce effectively and supply their products to the market with low transportation cost that increase farmers experience in the long run.

## REFERENCES

- AbebayehuGirma, 2011. Technical Efficiency of Haricot Bean Seed Production in Boricha District of Sidama Zone, Southern Ethiopia. M.Sc. Thesis Presented to School of Graduate Studies of Haramaya University.
- Aigner, D.J. and S.F. Chu, 1968. On Estimating the Industry Production Function. *American Economic Review*, 58(4): 826-839.
- Aigner, D.J., K.C.A. Lovell and P.S. Schmidt, 1977. Formulation and Estimation of Stochastic Models. *Journal of Econometrics*, 6: 21-37.
- Ajibefun, I.A., 2002. An Evaluation of Parametric and Non-parametric Methods of Technical Efficiency Measurement: Application to Small Scale Food Crop Production in Nigeria. *Journal of Agricultural and Social Sciences*, 4: 95-100.
- Amos T.T. 2007. An Analysis of Productivity and Technical Efficiency of Smallholder Cocoa Farmers in Nigeria. *Journal of Social Science*, 15(2): 127-133.
- AregaAlene and M. H. Rashid, 2005. The Efficiency of Traditional and Hybrid Maize Production in Eastern Ethiopia: An Extended Efficiency Decomposition Approach. *Journal of African Economics*, 15: 91-116.
- AynalemGezahegn, 2006. Technical Efficiency in Maize Production: A Case of Smallholder Farmers in Mecha District, Ethiopia. M.Sc. Thesis Presented to the School of Graduate Studies of Alemaya University.
- AbayAsfaw and AssefaAdmassie, 1996. The Impact of Education on Allocative and Technical Efficiency of Farmers: The Case of Ethiopian Small Holders. *Ethiopian Journal of Agricultural Economics* 5(1): 1-26.
- Ajibefun I. A., G. E. Battese and A.G. Daramola, 1996. Investigation of Factors Influencing Technical Efficiency of Smallholder Croppers in Nigeria, CEPA Working Papers, No. 10/96, Department of Econometrics, University of New England, Armidale.
- Ajibefun I. A., G. E. Battese and R. Koda, 1996. Technical Efficiency and Technological Change in the Japanese Rice Industry: A Stochastic Frontier Analysis, CEPA Working Papers, No. 9/96, Department of Econometrics, University of New England, Armidale.
- Ajibefun I.A. 2002. Analysis of Policy Issues in the Technical Efficiency of Small Scale Farmers Using the Stochastic Frontier Production: With Application to Nigerian Farmers. Paper Prepared for Presentation at the International Farm Management Association Congress, Wageningen, The Netherlands.
- AmareGebreEgziabher, 1998. Efficiency of Small-Scale Farming in Toyo District, Arsi: A Quadratic Risk Programming Approach. *Ethiopian Journal of Agricultural Economics*, 2(1): 1 - 26.
- Apezteguía B.I. and M.P. Garate, 1997. Technical Efficiency in the Spanish Agro Food Industry. *J. Agricultural Economics*, 17, 179 - 189.
- Arega D. Alene and Rashid M. Hassan and Mulat D., 2000. The Technical, Allocative and Economic Efficiency of Maize Production Under Improved Technology in the Bako Area of Western Oromia: A Stochastic Efficiency Decomposition Approach.
- Arega D. Alene and Rashid M. Hassan, 2002. Measuring the Impact of Ethiopia's New Extension Program on the Productive Efficiency of Farmers, Contributed Paper Selected for Presentation of the 25<sup>th</sup> International Conference of Agricultural Economics, August 16 – 22, 2002, South Africa.
- BefkaduDegife and BerhanuNefa, 2000. Annual Report on the Ethiopian Economy, Addis Ababa.
- Banker R., A. Charnes and W. Cooper, 1984. Some Models for Estimating Technical and Scale inefficiencies in Data Envelopment Analysis. *Management Science*, 30:9, 1078 – 1092.
- Battese G.E., 1998. A Methodological Note on a Stochastic Production Frontier Model for the Analysis of the Effects of Quality of Irrigation Water on Crop Yields. *The Pakistan Development Review*, 37:3, 293 – 298.
- Battese G.E. and S. Hassan, 1998. Technical Efficiency of Cotton Farmers in Vehari District of Punjab Pakistan. CEPA Working Papers, Department of Econometrics, University of New England, Armidale. No 8/98.
- Battese G.E. and T.J. Coelli, 1995. A Model for Technical Inefficiency Effects in a Stochastic Frontier Production Function for Panel Data. *Empirical Economics*, 20, 325 - 332.
- BezabihEmana, 2000. The Role of New Varieties and Chemical Fertilizer under Risk: The Case of Smallholders in Eastern Oromia, Ethiopia. Ph.D. Dissertation, Department of Horticulture, University of Hannover, Shaker Verlag, Germany.
- Bravo-Ureta B.E. and A. Pinheiro, 1997. Technical, Economic and Allocative Efficiency in Peasant Farming: Evidence from Dominica Republic. *The Developing Economics*, xxxv-1, 48-67.

- Coelli T.J., 1995a. Estimators and Hypothesis Tests for Stochastic Frontier Function: A Monte Carlo Analysis. *Journal of Productivity Analysis*, 6, 247 – 268.
- Coelli T.J., 1995b. Measurement and Source of Technical Efficiency in an Australian Electric Generation, Paper Presented at the New England, Armidale, November 23-24.
- CSA (Central Statistical Authority), 2016. Statistical Report on Area and Crop Production. Addis Ababa, Ethiopia.
- Dawit Alemu and G.W. Meijerink (2010); Wheat Traders and the ECX: An Overview with Focus on Transaction Costs and Risks, VC4PPD Report #8, Addis Ababa.
- Dawit Kelemework, J.S. David and E.G. Fonsah, 2012. Innovation Systems and Technical Efficiency in Developing-Country Agriculture. Selected Paper Prepared for Presentation at the Southern Agricultural Economics Association Annual Meeting, Birmingham, AL.
- Dolisca, F. and M.J. Curtis, 2008. Technical Efficiency of Traditional and Non-traditional Crop Production: A Case Study From Haiti. *World Journal of Agricultural Sciences*, 4(4): 416-426.
- Farrell, M.J., 1957. The Measurement of Productive Efficiency. *Journal of Royal Statistical Society. Series A*, 120: 253-290.
- Fekadu Gelaw, 2004. Analysis of Technical Efficiency of Wheat Production: A Study in Machkel District. M.Sc. Thesis Presented to School of Graduate Studies of Haramaya University.
- Getu Hailu, 1997. Analysis of Performance Variation: The Case of Smallholder Farms in Eastern Hararghe Region. Unpublished M.Sc Thesis, Alemaya University.
- Gstach D. 1998. Technical Efficiency in Noisy Multi-output Settings. Working Paper, No. 59, Vienna University of Economics, Vienna.
- Herrero I. and S. Pabcoe, 2001. Estimation of Technical Efficiency: A Review of some of the Stochastic Frontier and DEA Software. *The Virtual Economics*, Vol. 15, 1-11.
- Heshmati A. and S.C. Kumbhakar, 1997. Estimation of Technical Efficiency in Swedish Crop Farms: A Pseudo Panel Data Approach. *J. Agricultural Economics*, 48(1), 22 - 37.
- Hika Wana. And Jema Haji, 2016. Economic efficiency of sesame production in Babogambel District of west wollega zone, oromia, Ethiopia. Unpublished M.Sc Thesis, Haramaya.
- Mohamed M. Ahmed, Berhanu Gebremedihin, Samuel Benin and Sineon Ehui, 1994. Measurement of Land Tenure Contracts in Ethiopia. *Environment and Development Economics*, 507 – 526.
- Mohammad Hassena, H Farah. W. Mwangi and Belay K. 1999. Factors Influencing Technical Efficiency of Crop Production in Assassa District of Southern Ethiopia.
- Mohammad Hassena, H Farah. W. Mwangi and Belay K. 2000. Factors Influencing Technical Efficiency of Barely Production in Assassa District of Southern Ethiopia, *Ethiopian Journal of Agricultural Economics*, 4 (1/2): 1 - 22.
- Mohammad J and E. Premachandra, 2003. Sensitivity of Technical Efficiency Estimates to Estimation Approaches: An Investigation Using New Zealand Dairy Industry Data. University of Otago, Economics Discussion Papers No. 0306.
- Mulat Demeke and Bekele Hundie. 2001. The Determinants of Yield of Major Cereals: The Contribution of New Technologies in Selected Villages of Ethiopia, Proceeding of National Workshop on Technological Progress in Ethiopian Agriculture Nov. 29 - 30, Addis Ababa, Ethiopia.
- Sharma K.R., P.S. Leung and H.M. Zalaski, 1999. Technical, Allocative and Economic Efficiencies in Swine Production in Hawaii: A Comparison of Parametric and Nonparametric Approaches. *J. Agricultural Economics*, 20, 23 - 35.
- Strock H., Bezabih Emanu, Berhanu Adenew, A. Borowiecki and Shimelis W/Hawariate (1991). Farming Systems and Farm Management Practices of Smallholders in the Hararghe Highlands.
- Wilson P., D. Hadley, S. Ramsden and I. Kaltsas, 1998. Measuring and Explaining Technical Efficiency in UK Potato Production. *Journal of Agricultural Economics* 49(3), 294-305.
- Yamane, T.I., 1967. *Statistics: An Introductory Analysis* 2<sup>nd</sup> Edition. New York, Harper and Row.