

# Encapsulated of Red Beet Colour Changes During Spray Drying

Neslihan Gulsever\* Sukru Karatas

Istanbul Aydin University, Engineering Faculty, Food Engineering Department

## Abstract

In this research, the red beet concentrates were encapsulated with maltodextrin (DE10) citric acid, monoglycerides, lecithin and sunflower oil then spray dried at 150, 160, and 170 °C. The color of each spray dried powder was diluted to one brix and analysed by spectrophotometer at 510 nm in duplicate which was compared to initial color of concentrated red beet. The deterioration of color losses were behaved first-order reaction and the reaction rates (k) were determined as 0.02, 0.039 and 0.068  $\text{sn}^{-1}$  at 150, 160, and 170 °C respectively. From reaction rates the activation energy was estimated about 21.16 Kcal/mol by using of Arrhenius equations. It was also determined that reaction rate was about two times faster at each drying temperature raise up 10 °C, it was also size of the encapsulated powder were determined between 1-10  $\mu\text{m}$  by scanning electron microscope.

**Keywords:** red beet, encapsulation, spray dry, activation energy, electron microscope

**DOI:** 10.7176/FSQM/100-01

**Publication date:** August 31<sup>st</sup> 2020

## 1. Introduction

The colour pigments found in foods deteriorate as a result of the processing techniques and heat treatments applied to the product, and subsequent colour losses occur. For this reason, synthetic or natural colouring agents are used to improve the appearance of the product, increase its quality and provide colour uniformity in different productions.

Beetroot (*Beta Vulgaris L.*) is used as a natural colouring for red tones in the food industry. Colour materials obtained from beets is used as a Colourant in products such as tomato soups, jams, yogurt, pudding, breakfast cereals, bakery products, confectionery, sausages and meat (Khan 2016).

The Colour of red beet is due to its high betalain content (~200mg / 100g fresh weight). Betalains are water-soluble nitrogen-containing pigments consisting of two structural groups. These pigments are red - purple betacyanine and yellow - orange betaxanthines. Their content in the roots depends on the degree of maturity, variety and climatic conditions. Betanin constitutes 75-78% of the total content of betacyanine pigments and represents 95% of all red pigments in isobetanin and beet juice. Betaxanthines include vulgaxanthines (vulgaxanthin I and II) (Azeredo 2009).

Natural Colour materials have low stability compared to synthetic ones. As with other natural Colour pigments, the Colour pigments in beets are affected by factors especially such as pH, oxygen presence, water activity, temperature and light (Ravichandran et al. 2013).

Encapsulation is one of the methods used to protect compounds of natural origin. The purpose of this method is to minimize the interaction between the environment and the components by creating an obstacle around the coating materials and sensitive components. By encapsulation of natural colour substances, increasing stability, long shelf life and high nutritional value food products are provided (Gibbs et al. 1999).

There are various techniques and coating materials that can be used in encapsulation to overcome the instability, solubility and usage problems of natural food Colourants. The most important step in the encapsulation process is to choose a suitable coating material (Shahidi and Han 1993). Different dextrose equivalent (DE) maltodextrins, carbohydrates such as sucrose, amylose, polydextrose; proteins such as gelatine, whey proteins (caseinate, casein); lipids such as candles, glycerine; gums (gum Arabic, alginates) are used as coating materials (Dubey et al. 2009).

There are several methods for encapsulation. These methods include spray drying, spray cooling, fluidized bed coating, coacervation, extrusion coating, can be listed as rotational suspension separation. The most common method among these methods is spray drying (Desai 2005)

Spray drying is a process in which an emulsion containing encapsulated material is atomized in a hot air circulating drying chamber. Contact of the solution with hot air causes the evaporation of water, leading to the production of microcapsules. With spray drying method, it provides a powder product characterized by various physical properties depending on drying parameters such as encapsulation, carrier concentration, solution flow rate, temperature speed (Janiszewska & Wlodarczyk 2012).

The purposes of this research was to investigate the red color of beet concentrate changes when was encapsulated with tapioca maltodextrin (DE10), citric acid, monoglycerides and lecithin and sunflower oil during spray drying at 150, 160 and 170 °C and also to determine encapsulated powder size by scanning electron microscope.

## 2. Material and Method

### 2.1. Material

Red beet concentrate used as a raw material in the thesis study is provided by Gökür Foodstuffs Import Trade and Industry Inc. Afyon, Turkey. Tapioca Maltodextrin (Dextrose equivalent (DE) 10) selected as a coating material, Modersnist Pantry, Chloe Allegra was provided by Holding LLC (USA), citric acid monoglycerides by Aspek Chemistry Food Import and Export Ind. Trade Co. Ltd. and lecithin is provided by Kimbiotek Chemical Substances Ind. Trade Inc.

### 2.2 Preparation of Feeding Emulsion

The emulsion contains 51.6% beet concentrate, 20% tapioca maltodextrin, 18% sunflower oil, 6% citric acid monoglycerides, 4% lecithin and 0.1% salt. The specified ratio of tapioca maltodextrin is kept in distilled water in an ultrasonic water bath until it is completely dissolved. Citric acid monoglycerides was mixed with magnetic stirring until it dissolved in sunflower oil. Then lecithin was added to the mixture. The prepared mixes were added to the beet concentrate.

To mix the coating materials and concentrate homogeneously, the final water-soluble dry matter content (Brix) of the mixture was adjusted to 15% and homogenized in the armfield (FT 9) pressurized homogenizer at 50 bar pressure.

### 2.3 Spray Drying Process

The spray drying process was carried out using a lab scale Lab –Plant SD40 Basic spray dryer (Lab Plant Ltd., UK). The feed emulsion was pumped into the atomizer with a peristaltic pump. Atomization was carried out using two fluid nozzles using compressed air. The compressed air flow rate was controlled by a variable area flow meter. The main chamber and the cyclone are made of thick transparent glass. After the inlet drying air passed through the heater, it flowed simultaneously with the spray from the main chamber. The dried powder samples were collected from the cyclone floor (Athanasia M 2003).

The controlled parameters of the spray dryer are the feed rate, atomizer pressure, the flow rate of the drying air (aspirator setting), the feed concentration and temperature, the inlet air temperature. The outlet air temperature of the dryer cannot be adjusted with a temperature regulator such as the inlet air temperature. The outlet air temperature is due to the combination of inlet air temperature, pump setting, supply concentration and aspirator setting (Mestry 2011).

In all experiments, the atomizer pressure, feed rate, and feed temperature were maintained at  $5 \pm 0.1$  bar, 4 ml / min and  $25 \pm 0.5$  C, respectively. Three different inlet air temperatures (150, 160, 170 ° C) were used. Outlet air temperatures (Toutlet) were monitored constantly. The inlet and outlet air temperatures were read from the digital display on the dryer control panel and recorded manually.

### 2.4 Investigation of Red Colour Pigments in Spectrophotometer

Pure water was added to the powders obtained by spray dryer at different drying temperatures and mixed for 10 minutes. The mixture was then filtered through filter paper. Samples were prepared in different brixes using Abbe refractometer.

Samples were placed in the cuvette and measured on a UV-Vis spectrophotometer. Absorbance values were determined. Calibration curve was created by measuring 510 nm wavelength of samples prepared in different brixes.

After the emulsion prepared with red beet concentrate and coating materials was dried at different drying temperatures in the spray dryer, the reaction rate constant and activation energy values were calculated by examining the change in red Colour according to Lambert Beer law.

### 2.5 Investigation of the Size and Microstructure of Microencapsulated Powders

Emission scanning electron microscopy (FEI QUANTA 450 FEG ESEM SEM) was used to examine the morphological properties of spray-dried powders. Thanks to the ESEM mode, the device provides ease of inspection of dusty, oily and organic structures without any coating required. The powders were attached to the double-sided adhesive tape pieces mounted on the SEM studs. Then scans were done at x500, x1000, x2000 magnification. During the micrograph, 20 kV acceleration potential and 5 spotlights were used.

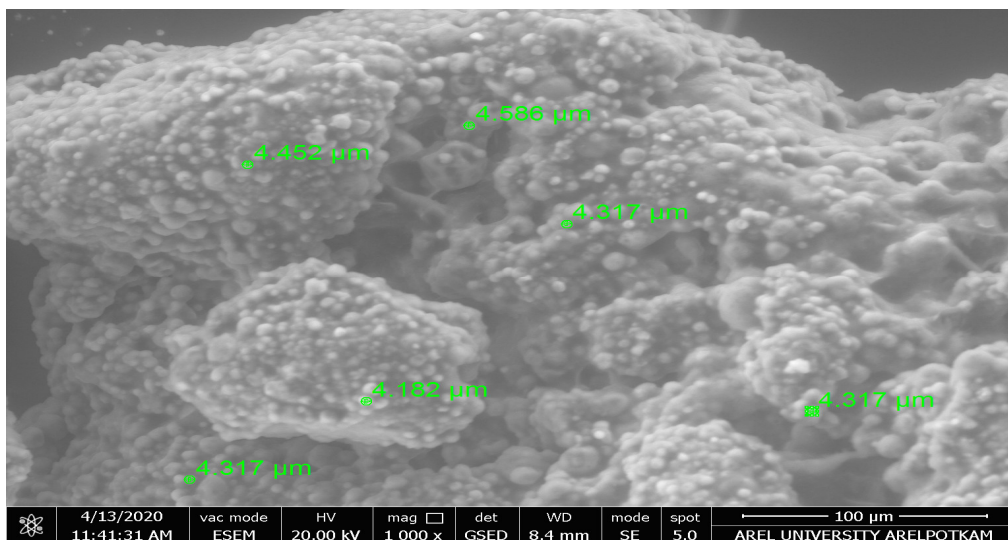


Figure 2.1: Scanning electron microscope images for beetroot powders encapsulated with tapioca maltodextrin.

### 3.RESULT AND DISCUSSION

After the emulsion prepared with red beet concentrate and coating materials was dried at different drying temperatures in the spray dryer, the reaction rate constant  $k_1$  and activation energy values were calculated by examining the change in red Colour according to Lambert Beer law. The study was conducted in two parallels and averaged.

The calibration curve of the samples prepared in different brix was determined. Calibration graph and regression equation were created with excel.

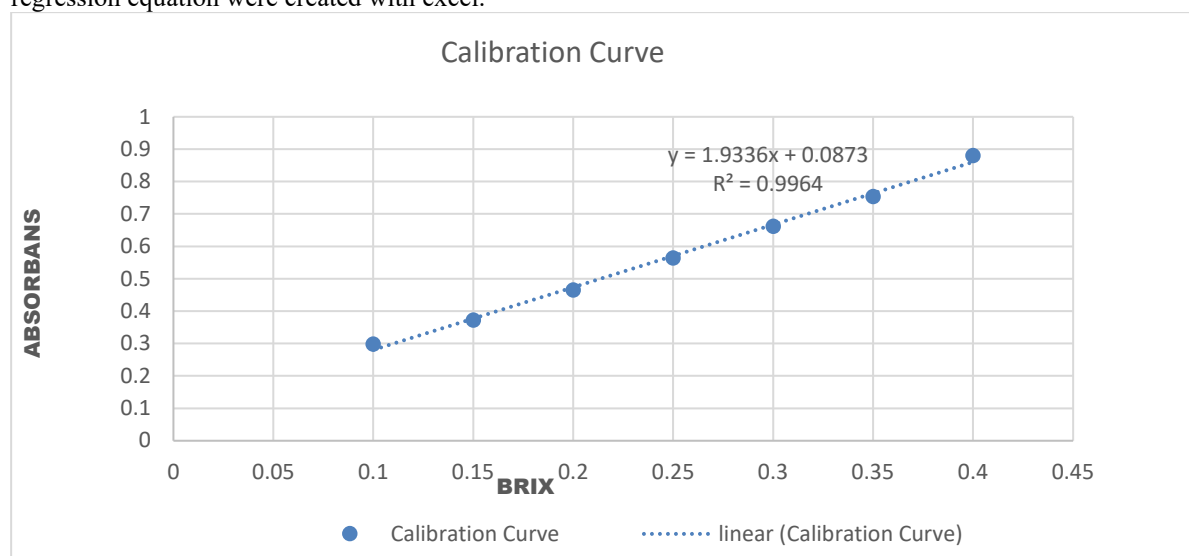


Figure 2 : Emulsion Absorbance –Brix Chart

The reaction rate increases with increasing temperature, which is first parameterized by Arrhenius. The change between reaction rate and temperature is expressed by the Arrhenius equation.

$$k = Ae^{-E_a/RT} \quad (1)$$

$k$  = reaction rate constant

$A$ : Reference Factor

$E_a$  = Activation Energy (cal/mol)

$R$  = Gas Constant ( 1.98 cal/molK)

$T$ : Temperature (Kelvin)

As indicated in Figure 3-5 ,  $k$  values were calculated for each temperature. Activation energy was determined from the relationship between  $\ln k$  values and  $1/T$  temperature.

Figure 3. Absorbance change of microencapsulated powder at 150 °C

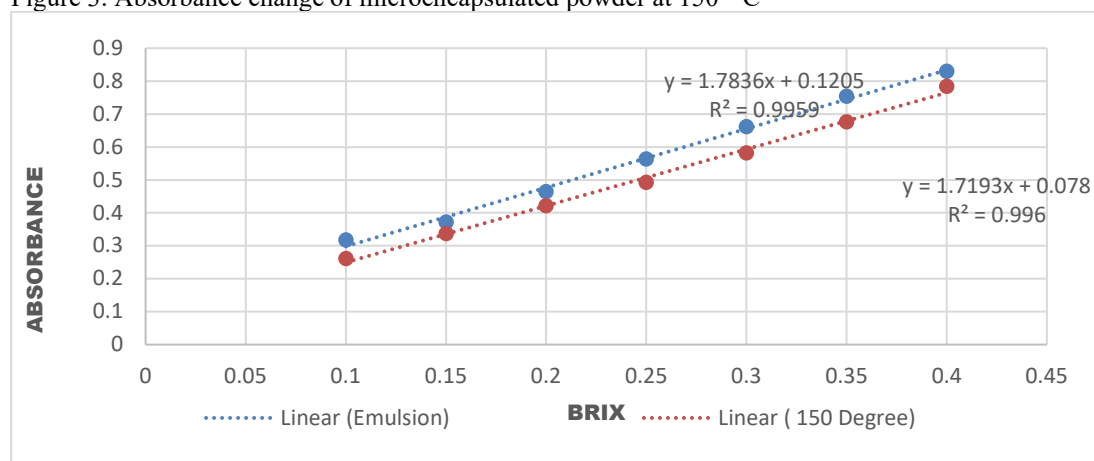


Figure 4. Absorbance change of microencapsulated powder at 160 °C

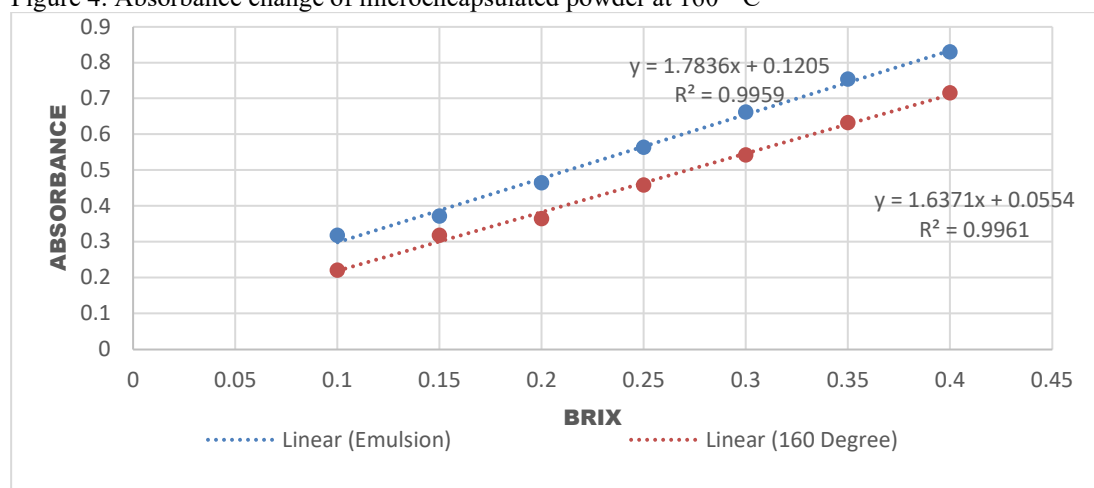
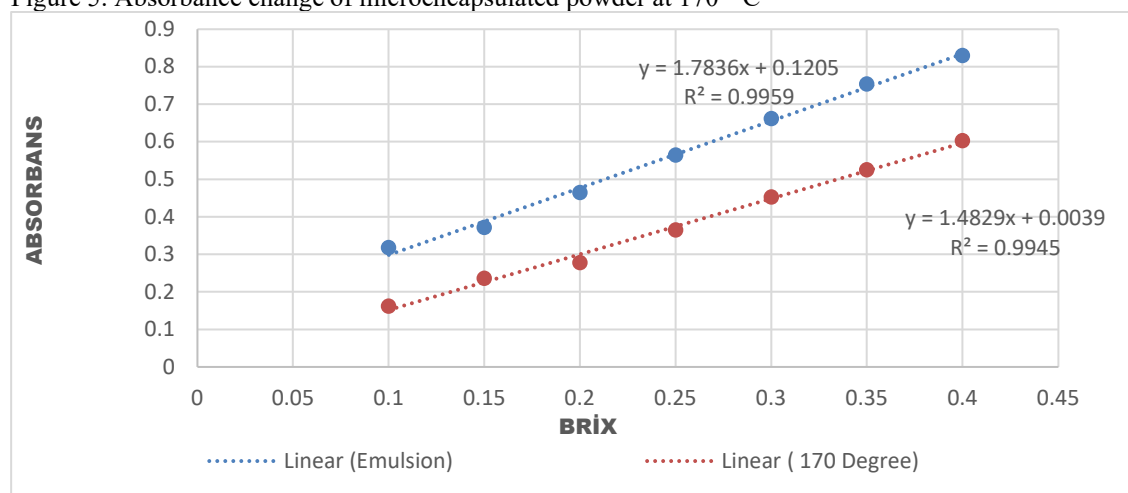


Figure 5. Absorbance change of microencapsulated powder at 170 °C



$$\ln (A_0/A) =k.t \quad (2)$$

Here;

$A_0$ : Absorbance of Emulsion

$A$ : Absorbance of spray dried one brix powder

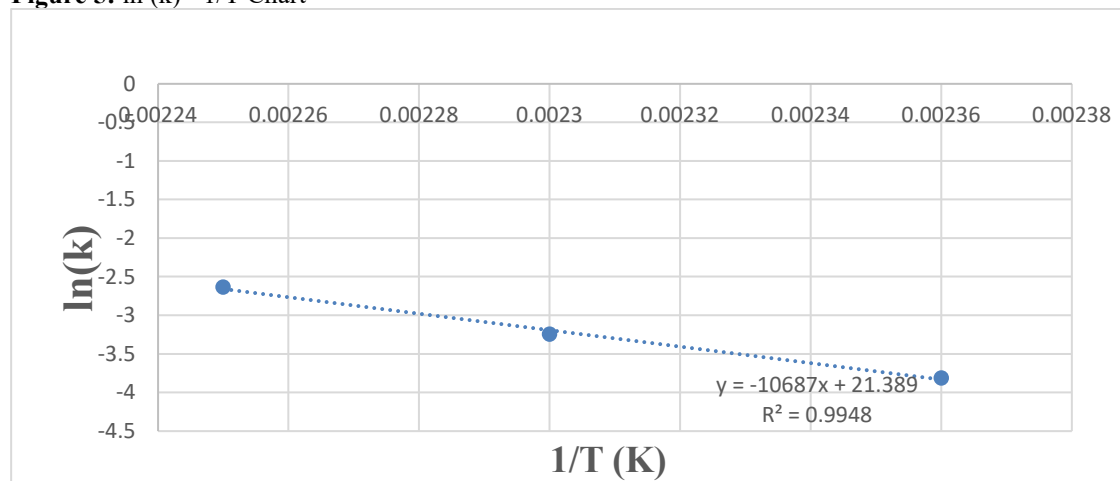
$k$ : Reaction Speed Constant ( $sn^{-1}$ )

$t$  : time (sn)

**Table 1:** Reaction Speed Constants and lnk Values

Temperature (K)	Reaction Speed Constant (K, sec-1)	ln(k)
443	0.068	-2.63
433	0.039	-3.27
423	0.022	-3.81

**Figure 5:** ln (k) - 1/T Chart



#### Activation Energy

$$\text{Slope} = -E_a / R$$

$$-10687 = E_a / 1,98$$

$$E_a = 21160,26 \text{ cal/mol} = 21,160 \text{ kcal/mol.}$$

As a result of the kinetic study, it was determined that there was a deterioration in the red beet colour pigments at all drying temperatures and this deterioration corresponded to the first-degree reaction kinetics. The deterioration of color loses of reaction rates were determined as 0.02, 0.039 and 0.068 s<sup>-1</sup> during spray drying at 150, 160 and 170 °C respectively which was behaved first-order reaction. The activation energy was estimated about 21.16 Kcal / mol using of Arrhenius equations, it was also found that deterioration rate was 2 times faster at each drying temperature raised up to 10 °C.

The similar research was carried out by other authors ; Saguy, Kopelman and Mizrahi (1978) for betanin extract at 60, 75, 81 and 86 °C ,the activation energy was determined about 20.4 kcal / mol this investigation is parallel with our results. It was also reported that degradation related with temperature in red beet and purple pitaya juices were behaved to the first order reaction (Von Elbe et al. 1974 & Saguy et al. 1978; Saguy 1979).

.Yeşil (2018), examined the crab apple (Malus Floribunda) juice encapsulation of anthocyanins with coating materials of different types and proportions and their thermal stability at different temperatures. Maltodextrin (MD), gum Arabic (GA) and MD: AG (1: 1) were used as coating material. Speed constants of maltodextrin at 70, 80, 90 °C providing the highest protection for anthocyanins as 1.45, 2.75 ve 5.05 x 10<sup>-3</sup> minutes. The activation energy was found as 17, 6 kcal/mol the difference may be due to temperature difference.

In the thermal stability study of Black Carrot Anthocyanins of Kirca et al. (2006), it was emphasized that high activation energy makes the reactions more sensitive to temperature change. Besides, it has been stated that the activation energy values for the thermal degradation of water-soluble pigments were between 15.02 -30.5 kcal/mol (Nielsen et al.1993).

In the study conducted to examine the effect of spray drying conditions on the physical properties of pitaya water powder, the most suitable air inlet temperature was determined as 150 °C. Low drying temperatures (150 °C) have been found to promote higher yields and red-purple Colour retention during spray drying. It was determined that the results obtained were in harmony with our research (Garcia et al. 2016).

In the study, it is aimed to reduce losses in red beet Colour pigments with the encapsulation process. It is of great importance to determine which parameters and which coating materials can be protected with Colour pigments. Tests can be made to increase the amount of encapsulated pigment using different coating materials and encapsulated powder size were determined between 1-10 µm by using of scanning electron microscope.

#### 4.CONCLUSION

It was determined that the color of red beet was so sensitive during spray drying. The deterioration of color loses of reaction rates were determined as 0,02, 0,039 and 0,068 s<sup>-1</sup> during spray drying at 150, 160 and 170 °C respectively which was behaved first-order reaction. The activation energy was estimated about 21,16 Kcal

/ mol using of Arrhenius equations, it was also found that deterioration rate was 2 times faster at each drying temperature raised up to 10<sup>0</sup>C. SEM micrograph analyses indicated that the particle size of the encapsulated beet powders, which were spray-dried at 150<sup>0</sup>C, was about 1 µm to 10 µm.

## REFERENCES

- Athanasia M., Goula and Konstantinos G., Adamopoulos (2003). Spray Drying Performance of a Laboratory Spray Dryer for Tomato Powder Preparation. *Drying Technology: An International Journal*, Vol. 21, No.2, 1273–1289.
- Azeredo, M.C. (2009) Betalains: Properties, Sources, Applications, and Stability – A Review *International Journal of Food Science and Technology*, 44, 2365–2376.
- Cai, Y.Z., Corke, H. (2000). Production and Properties of Spray-dried Amaranthus Betacyanin Pigments. *Journal of Food Science*, 65(6), 1248-1252.
- Chong, P. H., Yus Aniza, Y., Chin Nyuk, L. R., Farah, S. Taip, and Mohammad, G. A. (2012). Physicochemical and Nutritional Properties of Spray-dried Pitaya Fruit Powder as Natural Colorant. *Food Sci. Biotechnol*, 21(3), 675-682.
- Desai, K. G. H. ve Park, H. J. (2005). Recent developments in microencapsulation of food ingredients. *Dry. Technol.* Sayı 23, 1361–1394.
- Dubey, R., Shami, T.C., Bhasker-Rao, K.U. (2009). Microencapsulation Technology and Applications. *Defence Science Journal*, 59(1), 82-95.
- Garcia-Lucas, K.A., Mendez-Lagunas, L.L., Rodriguez-Ramirez, J., Campanella, O.H., Patel, B.K., Barriada-Bernal, L.G. (2016). Physical properties of spray dried *Stenocereus griseus* pitaya juice powder. *Journal of Food Process Engineering*, 40, 1-9.
- Gharsallaoui, A., Gae'ille Roudaut, O., Chambin, A.V., Saurel, R. (2007). Applications of spray-drying in microencapsulation of food ingredients: An overview. *Food Research International*, 40, 1107–1121.
- Gibbs, B.F., Kermasha, S., Alli, I., and Mulligan, C.,N. (1999). Encapsulation in the food industry: a review , *International Journal of Food Sciences and Nutrition*, 50, 213-224.
- Herbach, K.M., Stintzing, F.C., Carle, R. (2006). Betalain stability and degradation-structural and chromatic aspects. *Journal of Food Science*, 71(4), 41-50.
- Janiszewska, E. (2014). Microencapsulated beetroot juice as a potential source of betalain. *Powder Technology*, 64, 190-196.
- Janiszewska, E., Wlodarczyk, J. (2012). Influence of spray drying conditions on beetroot pigments retention after microencapsulation process. *Acta Agrophysica*, 20(2), 343-356.
- Khan, M.I. (2016). Stabilization of Betalains: A Review *Food Chemistry* 197 1280–1285.
- Kirca, A., Ozkan, M. ve Cemeroglu, B. (2006). Stability of black carrot anthocyanins in various fruit juices and nectars. *Food Chemistry*, 97 (4), 598-605.
- Labuza, T. P. (1984), Application of Chemical-Kinetics to Deterioration of Foods, *Journal of Chemical Education*, 61 (4), 348-358.
- Mestry A.P., Mujumdar, A.S., Thorat B.N (2011). Optimization of Spray Drying of an Innovative Functional Food: Fermented Mixed Juice of Carrot and Watermelon, *Drying Technology: An International Journal*, 29:10, 1121-1131
- Nielsen, S. S., Marcy, J. E. ve Sadler, G. D. (1993). Chemistry of aseptically processed foods, In: Principles of Aseptic Processing and Packaging, Eds: Chambers, J. V. ve Nelson, P. E., *Washington, DC: Food Processors Institute*, p, 257.
- Ravichandran, K., Nay Min Min Thaw Sawa, Adel A.A. Mohdalya, Ahmed M.M. Gabra, Kastella, A. Riedela, H. Caia, Z. Knorr, D. Smetanska, I. (2013). Impact of Processing of Red Beet on Betalain Content and Antioxidant Activity. *Food Research International*, S: 670-675
- Saguy, Saguy, I.; Kopelman, I.J. and Mizrahi S. (1978). Thermal Kinetic Degradation of Betanin and Betalamic J. *Agric. Food Chem.*, Vol. 26, No. 2.
- Shahidi, F. and Han, X-Q. (1993), Encapsulation of Food Ingredients, *Critical Reviews in Food Science and Nutrition*, 33(6), 501-547.
- Von Elbe, J.H., I.Y. Maing and C.H. Amundson. (1974) Colour stability of betanin. *J. Food Science.*, 39, 334-337
- Yeşil, S. (2018). Süs Elması Antosiyaninlerinin Enkapsülasyonu ve Termal Stabilitesinin Belirlenmesi. Yüksek Lisans Tezi, Selçuk Üniversitesi Fen Bilimleri Enstitüsü, 48.