

Modelling Interest Rate Pass-Through in Rwanda: Is the Interest Rate Adjustment Dynamics Symmetric or Asymmetric?

Musoni J.Rutayisire
Economic Policy and Research Network

Abstract

The influence of monetary policy depends on the effectiveness of the interest rate pass-through, that is the size and the speed to which changes in the central bank policy actions are transmitted to bank retail interest rates. The objective of this paper is to investigate the relationship between the policy-controlled interest rates (Repo and Treasury bill rates) and the bank interest rates (interbank, deposit and lending rates) in Rwanda with the view to empirically examine the size and speed of the interest rate pass-through in the long run and short run and determine whether the pass-through process is symmetric or asymmetric. The empirical results of the paper, using monthly data covering the period from January 2008 to December 2017 indicate that the interbank, deposit and policy rates are cointegrated, hence a non-linear error correction model has been used to assess the asymmetric adjustment dynamics to long-run equilibrium. By contrast, the lending rates were found to be cointegrated with none of the selected policy rates; hence the interest rate pass-through has been estimated by means of a transformed autoregressive distributed lag model. The empirical results of the study show that the estimated long-run as well as the short run interest rate pass-through of the selected policy rates to deposit and lending rates is weak and sluggish. Regarding the asymmetric adjustment process of the bank rates, empirical results show that depending on the policy rate, the interbank and deposit rates react differently following a negative and a positive shock in the policy rates; but no evidence was provided for asymmetric adjustment of the lending rates.

Keywords: Interest rate pass-through, monetary transmission mechanism, asymmetric adjustment.

JEL: E430, E520

DOI: 10.7176/JESD/10-14-13

Publication date: July 31st 2019

* This research was supported by a grant from the African Research Consortium (AERC). Special thanks to resource persons and researchers for their helpful discussions and suggestions during different AERC Bi-Annual workshops.

I. Introduction

The interest rate pass-through has received a great deal of attention in theoretical and empirical research on monetary policy making. However, while the bulk of the literature on the issue was devoted to industrial countries, it is only recently that a few studies focused on emerging and developing countries. The interest rate pass-through, defined as the extent to which changes in the policy rate are transmitted to bank retail interest rates, i.e. the deposit and lending rates, is a key element in the monetary transmission mechanism and the effectiveness of monetary policy. Central banks use the policy rate to influence the short-term money market rates which in turn affect bank retail rates; in the end, banks' decisions on the yield of their assets and liabilities affect the behavior of deposit holders and borrowers on savings, investment and consumption. A fuller and faster interest rate pass-through enhances the effectiveness of monetary policy and improves the capacity of the central bank to achieve its macroeconomic goals of stabilizing aggregate output and prices. Therefore, the determination of the size and speed of the interest pass-through is crucial for the central bank to correctly calibrate its monetary policy stance.

Various studies have investigated the interest transmission dynamics in different countries. The overall findings of these studies indicate that : the pass-through process is incomplete and sluggish, implying that changes in the policy rate are not passed on one to one to bank retail rates and that the transmission takes time ; the size and speed of interest rate pass-through varies across countries and over time ; moreover , the interest rate pass-through varies depending on the bank rates considered and the bank products (Cottarelli ,Ferri and Generale ,1995; Mojon ,2000; De Bondt, 2002 ; Sander and Kleimeier , 2004). In addition, it was observed that the adjustment of the bank retail interest rates may be asymmetric, meaning that the reaction of the bank rates to policy rate shocks is different depending on whether the innovation in the policy rate is positive or negative (De Bondt , 2002 ; Sander and Kleimeier ,2006 ; Karagianis ,Panagopoulos and Vlamis , 2010).

A good understanding of the responsiveness of the bank retail and interbank rates to changes in the policy rates is particularly important in Rwanda, given that banks are the predominant financial institutions in collecting savings and providing loans to firms and households and are consequently the main conduit of monetary policy impulses to the real economy. This paper follows the above line of research and examines in the case of Rwanda how effectively the innovations in the policy rates are transmitted to bank retail and interbank rates and whether the interest rate pass-through is symmetric or asymmetric , using the most recently available data and appropriate methodology.

Research problem and motivation

Most empirical studies on the interest rate pass-through have been concentrated on developed countries and some emerging countries of Latin America, Europe and Asia, while the literature on the issue for Sub-Saharan African countries remains scanty. Regarding Rwanda, the issue did not attract much attention until recently as the monetary authorities envisaged to adopt the inflation targeting regime in a near future for the conduct of monetary policy. In Rwanda, as in many other African countries, the monetary policy framework and the financial environment have undergone significant reforms in the last two decades resulting in the abolishment of direct credit controls, the liberalization of bank interest rates and the removal of barriers to entry of new banks, while the Central Bank adopted the indirect and market based instruments for conducting monetary policy. However, despite the changing financial environment which was expected to have a significant impact on the interest rate pass-through and by implication on the effectiveness of monetary policy, no systematic investigation was carried out to assess the effects of the reforms on the interest rate pass-through. This study intends to fill the gap.

While some studies examined the monetary transmission mechanism in Rwanda (Davoodi, Dixit and Pinter, 2013; Kigabo, Munyankindi and Amahoro, 2008), only one recent study by Kigabo, Mwenese and Bagabe (2016) focused on the interest pass-through in Rwanda using the single equation and the autoregressive distributed lag model (ADL) with monthly interest rate series covering the period 2008-2015. The overall finding of this study is that the long-run and short run effect of changes in the Treasury bill rate on lending and deposit rates of different maturities is incomplete.

Compared to the paper by Kigabo, Mwenese and Bagabe (2016), the contribution of the present study is threefold. Firstly, this study not only examines the interest rate pass-through in Rwanda, but it is the first attempt to investigate the possibility of asymmetries in the dynamic adjustment of the bank retail rates in response to changes in the policy rates using cointegration and asymmetric error-correction model approach (Scholnick, 1996; Sander and Kleimeier; 2002). Secondly, in addition to the Treasury bill rate used as policy rate in the aforementioned paper, the present study examines the pass-through from the repo rate, which provides empirical evidence of the relative effectiveness of each instrument in the transmission of policy rate changes to bank retail rates. Thirdly, the pass-through from the policy rate to interbank rate has also been investigated since it is the first step of the entire pass-through process.

Objective of the study

The primary objective of this research is to analyze the interest pass-through mechanism in Rwanda; more specifically, this study aims to:

- determine the size and speed of the pass-through between the policy and bank rates in the long run and short run ;
- examine whether the short-run interest rate adjustment dynamics is symmetric or asymmetric;

The rest of the paper is organized as follows: section 2 provides a brief overview of the theoretical and empirical literature on the interest rate pass-through; section 3 highlights the main features of financial development and monetary policy framework in Rwanda; section 4 presents the data used and the modelling methodology; section 5 provides and discusses the empirical results of the research; section 6 concludes and summarizes the policy implications of the study.

II. Literature review

Theoretical review

Theoretically the factors that may affect the bank retail rates responsiveness to changes in the policy rate are various; they include but are not limited to the following: structure and ownership of the financial system, collusive behavior of banks, menu and switching costs, asymmetric information and macroeconomic conditions.

The structure of the financial system is a major determinant of the interest rate pass-through and refers to the number of market players, the degree of competition and bank concentration, the ownership structure, the level of development and openness of financial markets (Cottarelli and Kourelis, 1994). Cottarelli and Kourelis argued that the demand elasticity for loans is weaker in markets where there are a small number of competitors, high barriers to entry or no alternative sources of financing; consequently, in such markets, loan rates tend to react sluggishly to dynamics in the money market and policy rates in the short run. In contrast, a well-developed financial market with domestic bond and money markets, corporate debt securities and capital venture together with openness to international capital markets, result in a faster interest rate pass-through (Aziakpono and Wilson, 2010).

On the other hand, concentration introduces rigidity in the interest rate pass-through, as banks tend to adopt an oligopolistic behavior, causing the interest rates to adjust asymmetrically. Two competing theories have been proposed by Hannan and Berger (1991), Neumark and Sharpe (1992) to explain asymmetries in the adjustment of the bank retail rates: the collusive pricing behavior of banks and the adverse customer reaction hypothesis.

The collusive pricing behavior of banks argues that deposit rates will be rigid upwards following an increase

in the policy rate because an increase in the deposit rate constitutes an additional cost for banks in the form of a higher payment to depositors, while the lending rates will exhibit greater rigidity downwards in reaction to a reduction in the policy rate because a reduction in the lending rate negatively affects the profit margin of banks. Conversely, the adverse customer reaction behavior suggests that deposit rates will be sticky downwards in the event of a decrease in the policy rate, whereas the lending rate will show greater rigidity upwards when the policy rate increases.

The ownership structure of the financial system also plays a central role when it comes to the transmission of monetary policy (Espinosa-Vega and Rebutti, 2003; Amarasekara, 2005). In economies where state-owned financial institutions (banks and non-banks) are predominant in the financial markets, those institutions are instrumental in achieving policy objectives of governments and maximizing profit is not their primary constraint. In such an environment, interest rates are likely to adjust with delay due to inefficiencies and political considerations, hence causing stickiness in interest rate adjustment.

According to Rotemberg and Saloner (1987), price rigidity in response to changes in the underlying market conditions may be explained by “menu costs” which include the costs of changing and circulating the new price lists, printing, advertising, communicating changes to customers. The menu costs theory predicts that firms will adjust their prices only when the benefits from adjusting are greater than the cost of being out of equilibrium. Moreover, firms need to maintain a long term relationship with their customers and therefore do not want to continually alter their prices because this might have a negative impact on customer’s satisfaction. In line with this theoretical view, banks may delay before responding to changes in the policy rate (Cottarelli and Kourelis, 1994).

When a customer decides to move from a bank or a financial product to another in order to obtain more favorable conditions, he is exposed to the so called “switching costs”, referring mainly to search and transaction costs, which include the information cost to discover a bank with more favorable rates, the cost of learning different rates and conditions on the new loans or deposits. Given these considerations, the higher the switching costs, the more difficult it will be for the customer to move from a bank to another; as a result of the customer’s behavior, the bank retail interest rate will become sticky (Lowe and Rohling, 1992).

In their insightful study, Stiglitz and Weiss (1981) relate bank retail rates stickiness to asymmetric information in loan market. If banks increase their lending rates, they may attract riskier borrowers (adverse selection) while the increase of lending rates will give poor quality borrowers incentives to choose riskier projects (moral hazard). Consequently, banks will prefer to set lending rates below the market clearing rates and ration the amount of credit supply even if the funding costs increase. Thus, the authors have shown that in markets with imperfect information, the equilibrium in the loan market is characterized by credit rationing and the prevailing lending rates will not necessarily be altered following changes in other interest rates, including the policy rate; in such an environment, the lending rates will exhibit rigidity to upward stimulus.

Macroeconomic conditions have also an important impact on the size of the pass-through and adjustment speed of the bank interest rates. Banks find it easier to quicker pass on changes in the policy rate to their lending and deposit rates during favorable economic conditions characterized by rapid economic growth and stability (Egert and MacDonald, 2009). On the contrary, a higher degree of volatility in the policy and money market rates (mirroring high macroeconomic instability and uncertainty), reduces the information content of the policy signals and hence, makes it harder for banks to disentangle noise from policy signals; this weakens the interest rate pass-through, given that banks will wait longer before changing their rates (Egert, Crespo-Cuaresma and Reininger, 2007).

Empirical review

Empirical works on the interest rate pass-through are relatively new in economic literature as early studies emerged only in the 1990s. In a logit modelling framework Hannan and Berger (1991) investigated the adjustment of prices in the US banking market over the period 1983-1986, focusing on deposit rates and the issue of asymmetry. Their findings show that price rigidity is significantly greater in market characterized by high level of concentration and deposit rates are significantly more rigid when the stimulus for a change is upward rather than downward.

Cottarelli and Kourelis (1994) used an autoregressive distributed lag model and aggregate time series to analyze the degree of lending rate stickiness in response to changes in money market rates in 31 selected industrial and developing countries. Their empirical results revealed a sluggish and incomplete adjustment in the lending rates following a shock in the money market rates and showed that the pass-through is higher in the long-term than in the short-term. They further explained that structural features of the financial system, such as capital controls, poor bank competition, barriers to entry, degree of development and openness of financial markets are the factors that weaken the interest rate pass-through.

More recent works investigated the bank interest rates stickiness and explored the possibility of asymmetric adjustment in developed countries. De Bondt (2005) used a vector error-correction model to measure the pass-through from the overnight rate to deposit and lending rates in the Euro area in the period 1996-2001. The author observed that the short run pass-through for both deposit and lending rates is incomplete, while in the long run,

the pass-through to lending rates is complete, but is incomplete for deposit rates. Andries (2012) assessed the interest rate pass-through dynamics in the European countries over the period 1993-2002 using the bounds testing approach for co-integration. His econometric results revealed that the bank retail rates adjustment following monetary impulses is sluggish, implying that banks dampen monetary policy shocks; there is a limited short run pass-through for different bank products and important discrepancies across countries have been identified; the long run pass-through is higher for interest rates on loans of shorter maturity and greater for interest rates on loans compared to interest rates on deposits; there is a marked heterogeneity in the speed of adjustment across European countries .

Karagiannis, Panagopoulos and Vlamis (2010) used a disaggregated general to specific (GETS) model to analyze the short-run and long-run interest rate pass-through in the Euro area and the US. Their findings indicate mixed results for the size and adjustment speed of the interest pass-through. For the Euro area, evidence suggests that changes in the money market rate are more influential than changes in Central Bank rate. There is a complete pass-through from money market to deposit rates and incomplete pass-through from money market rate to lending rates. For the US, the empirical results suggest that there is a complete and significant pass-through from the Central bank rate to both lending and deposit rates. Moreover, the size of the adjustment parameter for upward adjustment is quite higher. It appears that there exists no pass-through from money market rate to either bank retail rates in the US, implying that the Central bank rate is more effective. For the Euro area, there is a negative asymmetry for deposit rates, meaning that banks transmit only negative changes to depositors; in contrast, a positive asymmetry was found for loan rates, suggesting that banks tend to pass more of the increases in money market to lenders than the decreases.

A growing number of studies on the bank interest rates stickiness in emerging and developing countries have yielded mixed results. The burst of interest for these studies resulted from the move to inflation targeting regimes in many emerging and developing in the mid-2000s and the adoption of market-oriented instruments in the conduct of monetary policy which enhanced the role of the interest rate (Mohanty and Turner, 2008). These studies intended to understand and explain the persistence of interest rate rigidity and higher interest spread, even though financial reforms and liberalization were implemented in most emerging and developing countries.

An early study to be mentioned is that of Scholnick (1996) who found evidence of asymmetries in the interest rate adjustment for Malaysia and Singapore. Employing co-integration and non-linear error-correction model, the author showed that deposit rates in both countries are more rigid when adjusting upwards than downwards.

Egert, Crespo-Cuaresma and Reininger (2007) compared the interest rate pass-through in five Central and Eastern European countries (Czech Republic, Hungary, Poland, Slovakia and Slovenia-CEE-5), and three Euro area countries (Austria, Germany and Spain) selected as benchmarks. Using a multivariate vector auto-regression, this paper investigated the relationship between the policy rate and the bank retail rates on the one hand, the market and retail rates on the other hand. The study showed that the pass-through estimates vary from a country to another depending on the bank product; the pass-through is generally slow for overnight deposits, but becomes significantly higher from short to long term deposit rates; corporate lending rates are much more responsive to changes in the policy rate than deposit or household loan rates. In most cases, it was impossible to detect any co-integration relationship between the variables used.

Tai, Sek and Har (2012) assessed the pass-through from monetary policy rate to deposit and lending rates in Asian countries by running Seemingly Unrelated Regression (SUR) with data covering the period 1988-2010. The results of the paper revealed that: the pass-through from the policy rate to deposit and lending rates in short and long run is generally small and slow except for Malaysia, Hong Kong and Singapore where it is considerably higher and varies over time. In addition, it was also found that even though Korea, Philippines and Thailand adopted the inflation targeting regime and used the short term interest rate as the main monetary policy instrument, the interest rate adjustment remained sticky. Tai, Sek and Har argue that the faster transmission of the monetary policy stance in Malaysia, Hong Kong and Singapore may be explained by the improvement in efficiency of the banking system, the availability of alternative sources of financing and the increase of financial openness.

Cas , Menendez and Frantischek (2011) examined the strength of the pass-through in five Central American countries, the CADR-5 (Costa Rica, Dominican Republic, Guatemala, Honduras and Nicaragua) and six Latin American countries, the LA-6 (Brazil ,Chile ,Colombia, Mexico , Peru and Uruguay) taken as benchmarks , given their relatively more developed monetary policy frameworks. Panel estimation method with data covering the period 2004-2010 was employed to measure the pass-through from policy rate to lending rates. The main finding of the study was that the pass-through from policy rate to lending rates is generally weaker and slower in the CADR-5 countries than in the LA-6 countries. Factors influencing the interest rate adjustment include exchange rate flexibility, financial system development, independence and transparency of central banks, dollarization and bank concentration.

Studies that explored interest rate pass-through in Sub-Saharan African countries are limited. Jankee's (2005) work on interest rate pass-through in Mauritius is the earliest attempt. The author used the Johansen co-integration approach, TAR and M-TAR models (Enders and Siklos, 2001) to examine how changes in the interbank rate were

transmitted to lending and deposit rates during the period 1988-2003. This work concluded that the long run pass-through was incomplete in Mauritius for deposit as well as for lending rates. Asymmetry was found only for lending rates, which exhibited faster adjustment to negative than to positive shocks in the interbank rate. Acheampong (2005) found incomplete long-run pass-through of changes in money market rate to lending and deposit rates in Ghana using co-integration and error correction model with data covering the period 1994-2004. In addition, the findings of the study supported evidence of symmetry in the adjustment of lending and deposit rates to changes in the money market rate. Acheampong (2005) argued that low competition, dependence on bank loans, interest inelasticity, contract maturity and menu costs could account for the high degree of interest stickiness.

Sanusi (2010) employed impulse reaction functions from a structural vector autoregressive (SVAR) to derive the dynamic elasticities of the pass-through of monetary policy and interbank interest rates to lending and deposit rates in Nigeria for the period 2002-2010. The empirical results of the study may be summarized as follows: the pass-through is incomplete and slow for both deposit and lending rates; the pass-through of the policy rate to interbank rate is substantially higher and faster than to deposit and lending rates. The pass-through to money market rates increased significantly after the consolidation of the banking sector, while the pass-through to bank retail rates decreased relatively to the pre-consolidation period. Sanusi argued that these results are an indication that the consolidation of the banking sector and the reforms in the financial system succeeded in improving the efficiency in the money market but failed to remove the distortions in the retail loan and deposit rates market.

Samba and Yan (2010) examined the monetary policy transmission mechanism in the countries of the Central African Economic and Monetary Community (CAEMC) focusing on the pass-through from the policy rate to long term interest rates. They used data spanning the period 1990-2007 in an autoregressive distribution lag framework. Several findings emerge from this study: the short run pass-through is higher in the lending rates than in the deposit rates. The long-run pass-through from the policy rate to deposit rates is incomplete, while the pass-through to lending rates exhibits an overshooting effect in response to change in the policy rate. The study supports the evidence of asymmetric adjustment for both deposit and lending rates. For lending rates, the adjustment coefficient is lower in the cycle of increasing policy rate, while there is an overshooting reaction in the decreasing cycle. Regarding the deposit rates, the adjustment speed is higher in the cycle of increasing policy rate than in the decreasing cycle. Samba and Yan argue that the absence of competition in the banking sector, combined with excess liquidity in CAEMC countries may help to explain the upward rigidity of deposit rates. At the same time, the overshooting reaction of lending rates may reflect the creditors' overreaction facing higher rates, in order to hedge their risks against uncertainty and under developed financial markets.

In their paper, Sande and Okello (2013) investigate the pass-through dynamics in Uganda, employing bivariate co-integration method and the associated error correction model with data covering the period 2005-2012. They relate the interbank rate to policy rate (repo rate) on the one hand, and the deposit and lending rates to policy rate, on the other hand. Their findings indicate that the long run pass-through coefficient from the policy rate to interbank rate is greater than one, implying an overshooting pass-through, while it is incomplete for time deposit and lending rates. Likewise, the size of the pass-through of policy rate to saving and demand deposit is incomplete. Regarding the short-run adjustment process towards equilibrium, the estimates of the error-correction models for the interbank and bank retail rates point to a sluggish adjustment. From these results, Sande and Okello conclude that the monetary policy transmission mechanism is effective only for the wholesale interest rates, while it is ineffective for retail rates, meaning that the change in the policy rate is not fully transmitted to the retail rates; the low speed of adjustment to equilibrium is also an indication of the ineffectiveness of monetary policy to influence the banks' pricing decisions.

III. Financial development and monetary policy in Rwanda

Structure and development of the financial system

The analysis of the interest rate pass-through in Rwanda requires a good understanding of how the banking sector structure and the financial market developments may influence the behavior of bank interest rates. The banking market structure refers to the number and size of banks, while financial development focuses on the existence of diversified debt instruments in the financial market providing alternative financing and saving opportunities. Existing literature documented that high concentration in the banking sector could reduce the degree of competition among commercial banks and have a negative impact on the interest rate pass-through (Cottarelli and Kourelis, 1994; Gambacorta, 2008; Di, 2014); by contrast, the development of the financial system strengthens the interest rate transmission mechanism as more alternative sources of capital increase the elasticity of demand for bank loans (Cottarelli, Ferri and Generale, 1995).

The financial system in Rwanda has undergone important economic reforms during the two last decades. The reforms whose ultimate objective was to set up a sound and competitive financial market included: deregulation of interest rates, removal of credit controls, removing bank entry barriers, bank privatization and recapitalization, entrenchment of indirect monetary control instruments, development of money and capital markets, strengthening bank supervision and regulation and liberalization of foreign exchange markets. These changes which occurred

during the 1990s and 2000s were implemented through successive economic adjustment and stabilization programs supported by international development partners of Rwanda.

As a result of the above reforms, the structure of the financial system changed drastically. In the 1980s, the financial system in Rwanda consisted of the National Bank of Rwanda (NBR), i.e the Central Bank, three commercial banks, one mortgage bank, one development bank, one public insurance company, one public pension fund and a network of cooperatives working as a credit union. As at end December 2016, the banking sector is comprised of sixteen (16) banks, while the non-bank financial institutions include fifteen (15) insurance companies, 472 microfinance institutions and one (1) public pension fund (NBR, August 2017).

The other component of the financial system is the capital market where long term debt instruments are traded. The capital market in Rwanda mainly consisting of Government T-Bonds is at an early stage of development. Since the creation of the Capital market in 2011, outstanding Government and corporate bonds worth RWF 227 billion have been issued representing a mere 3.6% of GDP as at end 2016. It is worth mentioning that in an effort to strengthen the financial system, the Government of Rwanda has set up since 2014 a sustained program to issue long term T-bonds through the capital market on a quarterly basis.

Despite the presence of more participants, the banking sector remains overwhelmingly the most predominant segment in the financial system in Rwanda. As at December 2016, the banking sector accounts for 66.9% of the total assets of the financial system while the share of microfinance institutions and other non-bank financial institutions is 6.3% and 26.8 % respectively. The share of the banks in financial intermediation is even stronger, as banks account for more than 90% of the loan and deposit markets representing 20.3% and 23.1% of GDP respectively (NBR, August 2017).

The banking sector is not only predominant, but also not competitive. As reported in Kigabo, Munyankindi and Amahoro (2008), the low level of competition can be illustrated by the persistent and large interest rate spreads. Another sign of weak competition in the Rwandan banks is the high degree of liquidity preference. It has been shown in Kigabo, Mwenese and Bagabe (2016) that the banks' liquidity preference curve in Rwanda becomes perfectly elastic at around 16%. Under a perfectly competitive loan market, excess liquidity and bank loans should become substitutes at a zero loan rate. The fact that they are substitutes at such a high rate is a clear indication that the banking sector is not competitive (Khemraj, 2007).

Another feature of the Rwandan banking sector is its relative concentration, suggesting that banks have been able to exert market power over their clients and behaved in an oligopolistic manner. The National Bank of Rwanda noted however that the degree of concentration was significantly reduced in the last ten years as the share of the three largest banks in loans, deposits and total assets declined from 62.7%, 70.6% and 66% in 2006 to 44%, 47% and 45% respectively in June 2016 (NBR, July 2015-June 2016).

It has been widely documented that in a situation where firms and households depend on bank loans for their activities owing to underdeveloped money and capital markets, banks feel less pressurized to align their lending rates to the corresponding market conditions (Acheampong, 2005). In the case of Rwanda, alternative sources of debt such as funding from equity and bond markets are almost inexistent because Rwanda's security and money markets lack sufficient products and services suitable for majority of small and medium enterprises as well as for individuals. In such a context, bank retail rates may be unresponsive to monetary policy actions from the Central Bank due to the inelasticity of demand for loans. The policy implication of the structure of the financial system in Rwanda is that banks' predominance leads to a low and sluggish interest rate pass-through.

Monetary policy framework

As in most African countries until the end of the 1980s, the financial system in Rwanda functioned according to the McKinnon-Shaw financial repression paradigm characterized by government restrictions on the operations of financial system such as direct interest rate controls, credit ceilings, high liquid asset and high reserve requirements. As argued by Aziakpono and Wilson (2010), these extensive controls left little room for financial markets development and led sometimes to financial disintermediation.

In order to set up a sound and competitive financial system with the view to ensuring an efficient mobilization and allocation of financial resources, credit controls were removed in 1992 and interest rates were fully liberalized in 1996.

With the introduction of the money market operations in 1998, the NBR adopted the monetary targeting regime framework for the conduct of monetary policy with the use of indirect market based instruments to control overall monetary and credit conditions through the demand and supply of liquidity in the banking sector. These instruments included: reserve requirement, discount rate, open market operations and interventions in the foreign exchange market.

Regarding the exchange rate policy, it is worth mentioning that policy changes focused on setting up a flexible exchange rate regime. In December 1998, Rwanda has accepted the obligations of the IMF's article VII, sections 2, 3 and 4 and since then maintained an exchange rate system free of restrictions on payments and transfers for international transactions, making the Rwandan currency convertible (Republic of Rwanda of Rwanda, 1998).

Currently, as a result of successive revisions of the foreign exchange regulations, operations relating to imports and exports, services and capital account including direct and portfolio investments, lending in foreign currencies and personal transactions have been fully liberalized (Official Gazette N^o.44 of 04/11/2013).

Flexible exchange rate regime such as the one adopted by the NBR allows the country to enjoy a greater autonomy in terms of setting domestic monetary policy (Frankel, 1999) and as argued by Cas, Menendez and Frantischek (2011) and Gigigneishvili (2011), the interest rate pass-through is positively associated with exchange rate flexibility.

Even though the NBR relied on the above instruments for the conduct of monetary policy during the period covered by this study, it is worth mentioning that the role of the discount rate and the reserve requirement has been progressively minimized and market determined instruments have been favored to regulate the amount of liquidity in the money market through the open market operations, namely the Treasury bill rate and the Repo rate. Since the introduction of the repo operations in 2008, the key repo rate (policy rate) which is announced on a quarterly basis has been used to signal the monetary policy stance of the Central bank, while the repo transactions have been employed in the open market operations as the main instruments to inject or absorb liquidity in the banking sector. These operations involve the repo rate which is the rate at which commercial banks can obtain funds from the Central bank, while the reverse repo rate is the rate at which commercial banks can invest their surplus funds in Government securities. Therefore by altering the Key repo rate and the Repo rate, the NBR signals its monetary policy stance which is transmitted to interbank rates and other money market rates and ultimately to bank retail rates.

To illustrate the developments in the money and capital markets in Rwanda in recent years, the main operations comprising short and long term debt instruments are summarized in Table 1 where the volume of transactions for each debt instrument is presented.

Table 1: Developments in domestic financial markets (in millions of RWF)

Assets	2009	2010	2011	2012	2013	2014	2015	2016
Interbank	549,044	518,095	395.0	-	145,800	224,800	242,500	444,953
Treasury bills	-	54,462	64,294	95,256	156,200	172,300	225,100	177,700
Repurchase agreements (repos)	58,100	106,800	114,900	52,450	29,500	47,500	26,500	30,500
Government T-bonds	-	15,000	15,000	10,000	18,500	42,500	55,000	55,000
Corporate bonds	1,000	-	-	-	-	15,000	-	-

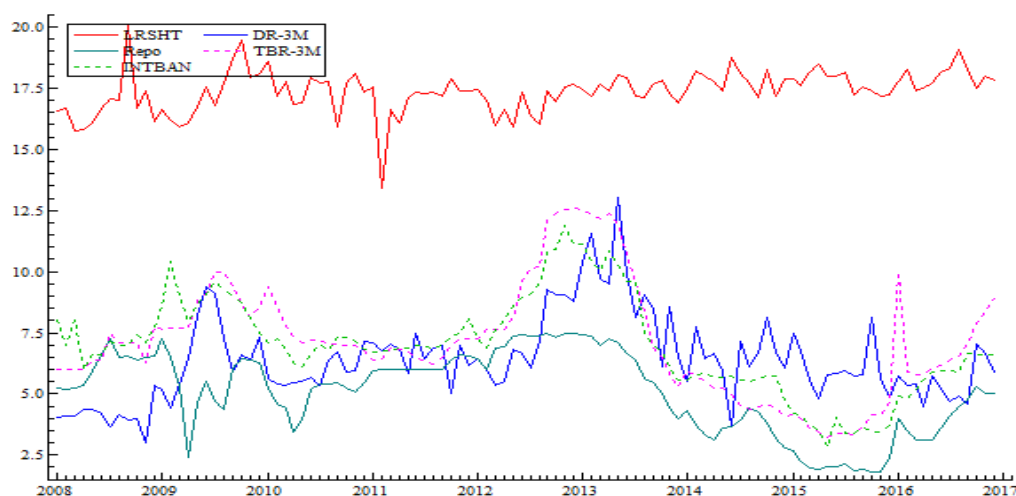
Source: NBR, Financial Markets Department

As shown in Table 1, the money and capital markets in Rwanda are dominated by the short term money market instruments including interbank transactions, the Repo and T-Bill operations which are short term debt instruments used by the Central bank to regulate liquidity in the banking sector, while the long-term debt instruments, namely the Government T-bonds and the corporate bonds account for a low share in the global financial market. It is worth noting that transactions in repo agreements witnessed an upward trend between 2009 and 2011 reflecting a tighter monetary policy implemented by the NBR, while a relaxed monetary policy stance was observed between 2012 and 2016. In contrast, the volume of T-Bill and T-bonds operations exhibits a different pattern as the transactions have been on the rise from 2010 to 2016, reflecting banks' investments in Government securities of longer maturities. In fact, the issuance of Government T-Bonds has been intensified since 2014 in a bid to promote and strengthen the capital market development and improve the monetary transmission mechanism in Rwanda. It appears however that the capital market is at an early stage of development and cannot compete so far with the banking sector in providing funding and saving opportunities to the public.

3.3. Interest rate developments

Before engaging in a rigorous analysis based upon econometric technique, it is instructive to look at the behavior of the key variables during the sample period, namely the bank and the policy rates. To this effect, the developments of the short term lending rates (*LRSHT*), the three months maturity deposit rate (*DR-3m*), the interbank rate (*INTBAN*), the *Repo rate* and the three months maturity Treasury bill rate (*Tbr-3m*) are depicted in Figure 1, while the developments of the long term lending rate (*LRLot*), the interbank rate, the six months maturity deposit rate (*DR-6m*), the *Repo rate* and the six months maturity Treasury bill rate (*Tbr-6m*) are displayed in Figure 2. A common feature to be pointed out in the two figures is that, there is a consistently large spread between the lending and deposit rates, suggesting that during the sample period, there have been no efficiency gains in the banking system in Rwanda pointing to persistence of a non-competitive market.

Figure 1: *LRSHT, DR-3m, Repo rate, Tbr-3m and INTBAN*



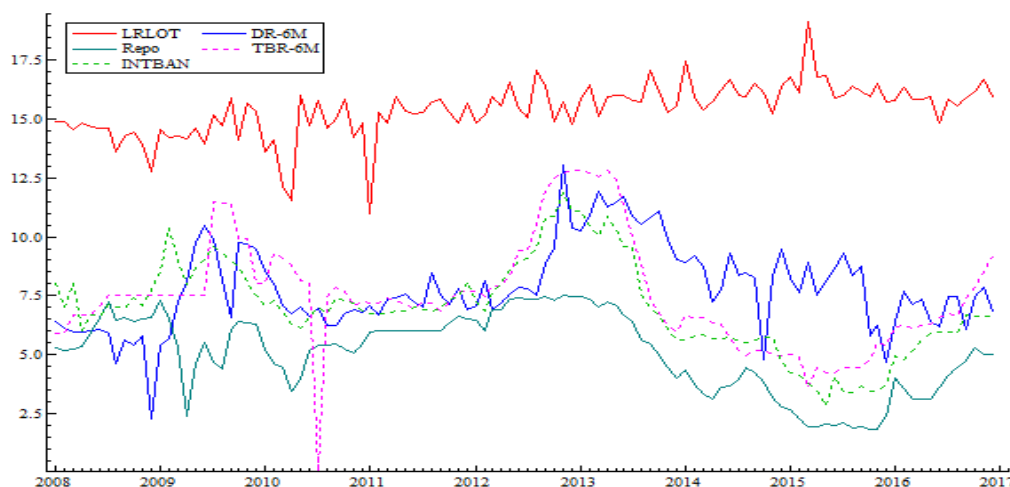
It is worth noting that during almost the whole period covered by this study, the banking sector was characterized by excess liquidity, resulting notably from the expansion of public spending reflecting the scaling up of foreign aid to Rwanda, so that the different monetary policy instruments were used by the Central Bank to drain this excess liquidity by reducing banks' reserves.

It may be observed in Figures 1 and 2 that except for the year 2009 marked by the credit crunch and 2010 characterized by comfortable liquidity conditions in the banking sector, the lending rates (short and long-term) were fairly stable and varied within a narrow range, while the deposit rates, the Treasury bill and the repo rates were more volatile and displayed stronger fluctuations. This contrasting behavior of the lending and other rates whereby lending rates seem to follow an independent development path, may be explained by the fact that the lending rates are unresponsive to changes in the policy rates because they are determined by factors other than the cost of funds, while the deposit rates are sensitive to changes in the policy rates and exhibit similar developments. As stated by the NBR in a recent policy document, the weak responsiveness of the lending rates to changes in the key repo rate is due to, among other factors, high operating costs in the banking system and high provisions for bad loans. In addition, the behavior of borrowers such as lack of information on loan conditions and culture of not bargaining with banks contributed to the rigidities in lending rates charged by banks (NBR, February 2015).

Despite their higher volatility, the deposit, interbank and policy rates exhibit a regular co-movement suggesting a long-run relationship between these rates; this co-movement is discernible in Figures 1 and 2. During the sample period, monetary policy has been actively used to cope with a variety of challenges stemming from domestic and external shocks. For instance, the shocks caused by global food and fuel crisis in 2008 resulted in higher inflation rising to more than 20% by end 2008. The NBR responded to these developments with a tighter monetary policy by raising the policy rate in mid-2008. However, by end 2008 and early 2009, following the world economic slowdown and a domestic liquidity crisis, the Rwandan economy experienced a sharp decrease in the growth of bank loans to private sector from 32% in 2008 to 4% in 2009. As a result the Central Bank relaxed the monetary policy stance to curb the decline in broad money and credit to private sector. The ensuing accommodative monetary policy meant to improve banks' liquidity and stimulate credit to economy included the cut of the key repo rate from 9% in December 2009 to 7% in early 2010. In subsequent years, the Central Bank implemented a prudent monetary policy to prevent risks of exacerbating inflation pressures resulting from rising inflation and uncertainties in the international and regional environment during the period 2011-2013.

Accommodative monetary policy was again implemented from the second half of 2013 through 2014 to support the recovery of the economy from the slowdown registered in 2013. The monetary policy stance was further relaxed in 2015 as the Central bank reduced the key repo rate to 6.5% in a context of low inflation. This downward trend of the policy rate was reversed in 2016 where money market rates have been increasing reflecting tighter liquidity conditions in the banking system in a context of economic slowdown. This change may also be explained by the interventions of the Central Bank in the foreign exchange market by selling US dollars to banks and the will of the monetary authorities to align the money market rates to the key repo rate so as to develop interbank market transactions (NBR, February 2017).

Figure 2: LRLOT, Dr-6m, Repo rate, Tbr-6m and INTBAN



A close examination of the developments of the deposit and interbank rates in Figures 1 and 2 shows that the fluctuations of both rates follow closely the changes in the policy rates, i.e. the repo and Treasury bill rates, albeit with a lag.

The responsiveness of the deposit and interbank rates to changes in the policy rate in the context of a global declining trend of the policy rates and relatively stable lending rates is consistent with the profit maximizing behavior of banks as the decline in the deposit rates increases the interest rate spread which contributes to the improvement of the banks' profit margin.

The foregoing analysis is an attempt to uncover the nature of the relationship between the bank rates and the policy rates in Rwanda. Overall, the visual inspection of the developments of the different rates shows clearly that, lending rates are not sensitive to changes in the Repo and Treasury bill rates. Conversely, the deposit and interbank rates exhibit a closer relationship with the selected policy rates, suggesting that monetary policy actions have more influence on deposit and interbank rates than on lending rates. However, this preliminary assessment cannot provide convincing information on the real nature of the relationship between the bank rates and the policy rates; this task has been achieved through a rigorous econometric analysis.

IV. Data and methodology

4.1. Data

The data used in this research consist of average monthly series of two policy rates, namely the Treasury bill rate of different maturities (from one to six months) and the Repo rate along with three bank rates (interbank, deposit and lending rates) collected from tables published by the National Bank of Rwanda. Interbank rate, deposit rates of different maturities (from one to six months) and lending rates of short, medium and long term have been considered for analysis. The data cover the sample period 2008-1 to 2016-12. This period has been chosen for two main reasons. First, the repo rate was introduced in 2008 as a new monetary policy instrument. Second, during this period, the main reforms in the financial system had been completed and the Central Bank had gained its full independence and relied more on the interest rate for conducting monetary policy. The choice of policy variables can be motivated as follows. In the current monetary policy framework, the key repo rate is the instrument used to signal the monetary policy stance of the Central bank. However, the key repo rate is announced on a quarterly basis and may remain unchanged for long time periods, which makes it less suitable for econometric purposes. By contrast, the Repo rate is dynamic since it is used by the NBR in the open market operations as the main instrument to signal the financial conditions in the money markets on a daily basis; therefore, the Repo rate is considered as the main policy rate in this study. The Treasury bill rate of different maturities has also been used as policy rate since it has been argued in the literature that in the long-run, banks set their retail prices in line with their marginal cost, i.e. the funding cost on loans and opportunity cost of deposits, which can be best estimated by money market rates reflecting market conditions (De Bondt, 2005).

4.2. Methodology

i). Theoretical framework

The theoretical analysis of the interest rate pass-through starts with a good understanding of the banks' price setting behavior in the determination of their lending and deposit rates in the presence of monetary policy shocks. The price charged by banks is indeed crucial since it influences their profitability and the soundness of the banking

industry, which in turn enhances financial stability. The oligopolistic version of the Monti-Klein model of bank profit maximization theory implying imperfect competition, asymmetric information and switching costs in the financial markets as outlined in Freixas and Rochet (2008) has been extensively used to explain the link between the policy rate and the bank retail rates (Fuertes, Heffernan and Kalotchou, 2006; Misati, Nyamongo and Kamau, 2011; Banerjee, Bystrov and Mizen, 2012; Makambi, Wawire and Omolo, 2013; Mbowe, 2015). The present study relies on the same approach as the Rwandan banks may be considered as oligopolistic and therefore exert market power in interest rate setting. As presented in Makambi, Wawire and Omolo (2013), under the modified Monti-Klein model, a bank is not a price-taker but sets its loan rates taking into account the demand for loans and deposits; the bank is further assumed to have direct clearing relationships with the Central Bank and seek to maximize profit (π), subject to its balance sheet. The balance sheet of the bank is comprised of loans (L) and reserves (R) on the assets side and deposits (D) and settlement balance (S) with the Central Bank on the liabilities side, so that :

$$R+L=D+S \dots \dots \dots (1)$$

It also follows that from equation (1) that total deposits may be presented as:

$$D=R+L-S \dots \dots \dots (2)$$

Assuming that a commercial bank extends loans at a rate i_L and pays interest rate i_D on deposits, it follows that the net interest income (NI) of the bank is given by the difference between the total interest earned on loans and the total interest expense paid to deposit holders :

$$NI = i_L L - i_D (R+L-S) \dots \dots \dots (3)$$

Clearing operations with other banks are conducted via the Central bank and commercial banks whose balance is negative pay a liquidity penalty equivalent to a punitive interest rate, i_P , known as the policy rate multiplied by the difference between the settlement balance and the required reserves at the Central bank, which gives the following total penalty equal to:

$$i_P \delta (S-R) \dots \dots \dots (4)$$

The commercial bank also incurs costs of managing loans. Taking this cost function as given by μL and using the modified Monti-Klein model which assumes that banks are confronted with a downward sloping demand function for loans and an upward sloping function for deposits, the profit maximization function, $\pi(L, R)$, derived from the combination of equations (3) and (4), may be expressed as the sum of the intermediation margins on loans and deposits minus the liquidity penalty and the management costs of loans as follows:

$$\pi(L, R) = i_L L - i_D (R+L-S) - \delta i_P (S-R) - \mu L \dots \dots \dots (5)$$

The bank's decision variables in the model are the volume of loans granted and the quantity of precautionary reserves it chooses to hold and profit maximizing bank equates its marginal revenue to marginal cost. Therefore, computing the first order conditions from the above profit maximization function by differentiating equation (5) with respect to L and R , and setting the results equal to zero yields:

$$i_L - i_D - \mu = 0 \dots \dots \dots (6)$$

and

$$-i_D + \delta i_P = 0 \dots \dots \dots (7)$$

From equation (6) and (7), it follows that $i_L - i_D = \mu$ and $i_D = \delta i_P$, implying that

$$i_L = \delta i_P + \mu \dots \dots \dots (8)$$

Thus, the oligopolistic version of the Monti-Klein model demonstrates that there is a linear relationship between the policy rate and the bank retail rates and shows how changes in the policy rate may be transmitted to bank retail rates. Equation (8) formed the basis of the interest rate pass-through analysis in the empirical literature. Nonetheless, the above model may be criticized on the ground that, first, banks are not bound to borrow from the Central bank and pay a penalty rate and, second, developments of bank retail rates do not necessarily reflect the behavior of the policy rate. The policy rate is indeed a very short-term rate, while lending and deposit rates are expected to reflect long-term rates; furthermore, banks may obtain funds from a variety of sources, including retail deposits, interbank, bonds and Treasury bill markets (Illes, Lombardi and Mizen, 2015). Hence, using the policy rate to measure the interest rate pass-through would lead to erroneous conclusion on the interest rate pass-through process. De Bondt, Mojon and Valla (2005), De Bondt (2002) argue that in the long-run, banks set their retail prices in line with their marginal costs, i.e. the funding cost on loans and the opportunity cost of deposits, which can be best estimated by money market rates reflecting market conditions.

ii). Empirical model and estimation procedure

In order to analyze the relationship between the policy rates and the bank rates and measure the size and speed of the interest rate pass-through in Rwanda, autoregressive distributed lag model (ADL), co-integration technique, non-linear error correction models have been used. Using non-linear error correction model allows testing for differences in the bank rates adjustment when they are below or above their equilibrium level following a positive or negative shock in the policy rates.

To conduct the above analysis, the following basic model for interest rate pass-through proposed by De Bondt (2005) has been used:

$$br_t = b_0 + b_1 pr_t + \varepsilon_t \quad (9)$$

where br_t is the endogenously determined bank rate; pr_t denotes the policy rate assumed to be exogenous; ε_t is the *i.i.d* stochastic error term of the model; b_0 and b_1 are the long run model parameters; b_0 represents the constant markup and b_1 measures the degree of pass-through in the long run. Equation (9) provides a primary model of bank pricing decisions from which to assess the sensitivity of the bank rates to changes in the policy rates and in so doing the strength and magnitude of the interest rate pass-through. If markets are perfect (i.e. full information and perfect competition), the coefficient b_1 is expected to be equal to one, implying a complete long run pass-through or full transmission of monetary impulses to bank rates; in the context of imperfect markets, coefficient b_1 will be less than one, suggesting an incomplete interest rate pass-through or partial transmission of policy rate changes to bank rates. In fact, it is unlikely that the value of b_1 will be equal to one not only due to imperfect markets, but also to a number of factors including fixed menu costs, asymmetric information, high switching costs, collusive behavior and adverse customer reaction (Egert and Macdonald, 2009; Aziakpono and Wilson, 2010). It has also been pointed out that b_1 could be higher than one, hence recording an overshooting pass-through; this may occur when banks charge higher interest rates in an attempt to offset higher risks resulting from asymmetric information rather than reducing the supply of loans de Bondt (2005).

The econometric technique to be used for estimating equation (9) depends on the time series properties of the data. Therefore, a natural starting point of the analysis is to test all the variables for unit roots and determine their order of integration.

If the time series of bank and policy rates were found to be stationary in level, Equation (9) was estimated by ordinary least squares (OLS) technique. If the data were integrated in level, but stationary in first difference, the series were tested for cointegration. If the first difference stationary series were not cointegrated, then equation (9) was estimated by the conventional autoregressive distributed lag (ADL) model:

$$\Delta br_t = b_0 + b_1 \Delta pr_t + \sum_{i=1}^n b_i \Delta pr_{t-i} + \sum_{i=1}^m c_i \Delta br_{t-i} + \mu_t \quad (10)$$

where Δ denotes the first difference operator, b_1 is the measure of the immediate pass-through while b_i represents the short run pass-through reflected in the different lags of the policy rate, c_i is the autoregressive coefficient of the lagged dependent variable, μ_t is the white noise error term, n and m are the optimal number of lags used in the model. From equation (10), the long-run pass-through coefficients b_1 in equation (9) can be computed as in Egert, Crespo-Cuaresma and Reininger (2007) and Kwapil and Scharler (2010):

$$b_1 = \sum_{i=1}^n b_i / (1 - \sum_{i=1}^m c_i) \quad (11)$$

Keele and De Boef (2004) have also demonstrated that subject to some technical transformation, the conventional ADL may be used to generate an error-correction model with non-cointegrated stationary time series. Thus, Keele and De Boef propose to estimate the following regression:

$$\Delta r_t = \alpha_0 + \rho r_{t-1} + \mu_1 \Delta pr_t + \mu_2 pr_{t-1} + \varepsilon_t \quad (12)$$

which can further be reparametrized in an error-correction model:

$$\Delta r_t = \alpha_0 + \rho (r_{t-1} - \mu_2 pr_{t-1}) + \mu_1 \Delta pr_t + \varepsilon_t \quad (13)$$

in which ρ is interpreted as the speed of adjustment towards equilibrium and μ_1 captures the contemporaneous or immediate pass-through. The long-run parameters can be estimated from equation (12) as $\theta_0 = \alpha_0 / \rho$ and $\theta_2 = \mu_2 / \rho$.

In case the time series of interest rates were found to share a long-run relationship (i.e., cointegrated), this study adopted a dynamic model referred to as the autoregressive distributed lag (ARDL) bounds testing approach to cointegration proposed by Pesaran, Shin and Smith (2001) for cointegration analysis:

$$\Delta br_t = \alpha_0 + \alpha_1 \Delta pr_t + \gamma br_{t-1} + \delta pr_{t-1} + \sum_{i=1}^n \alpha_i \Delta pr_{t-i} + \sum_{i=1}^m c_i \Delta br_{t-i} + \mu_t \quad (14)$$

where α_1 represents the immediate pass-through, γ and δ are the coefficients of the lagged level variables; c_i is the autoregressive parameter, α_i represents the short run pass-through; μ_t is an *i.i.d* process with zero mean and constant variance.

The bounds testing approach presents important advantages over the other existing techniques in modelling cointegration dynamics as it provides greater flexibility in relaxing the assumptions that the time series should be integrated of the same order, they can indeed be I(0) or I(1). The small sample properties of the bounds testing approach are superior to that of other cointegration testing approaches. Furthermore, as argued by Fuertes and Heffernan (2008) and Ahmad, Aziz and Rummun (2013), equation (14) can be estimated by OLS and yields unbiased and consistent measures of long run mark-up b_0 and pass-through b_1 of equation (9).

Following the bounds testing approach, the presence of cointegration is detected by the implementation of the Wald coefficient restriction test (F-statistic) to the lagged level variables (br_{t-1} and pr_{t-1}) in equation (14) and

the null hypothesis of no cointegration is $H_0 : \gamma = \delta = 0$ against the alternative $H_1 : \gamma \neq \delta \neq 0$. The computed F-test value is compared with the critical values tabulated in Pesaran, Shin and Smith (2001). For a given level of significance, if the computed F-test statistic is smaller than the lower bound value, then the null hypothesis is not rejected; conversely if the computed F-test statistic is greater than the upper bound value, then the null hypothesis is rejected. On the other hand, if the computed F-statistic falls between the lower and upper values, then the result of the test is not conclusive. A significant F-test statistic for testing the joint significance of the lagged level variables indicates the existence of a long-run relationship and on the basis of equation (14) the long-run parameters of equation (9) are calculated as $b_0 = -\alpha_0/\gamma$ and $b_1 = -\delta/\gamma$.

To investigate the interest rate pass-through, the error correction mechanism (ECM) has been generally used in the literature. This methodology has the ability to quantify both the degree and speed of adjustment of the bank retail rates following a change in the policy rate. It also allows a distinction between the long-run relationship of the two variables and the short run adjustment towards their long-run equilibrium. On the basis of equation (14) this study derives an error correction model similar to that used by Sander and Kleimeir (2004) and Aziakpono and Wilson (2010) to examine the short run and long-run dynamics of the bank retail rates in response to changes in the policy rate:

$$\Delta br_t = \beta_0 + \beta_1 \Delta pr_t + \sum_{i=1}^n \beta_i \Delta pr_{t-i} + \sum_{i=1}^m \lambda_i \Delta br_{t-i} + \varphi ECT_{t-1} + \eta_t \quad (15)$$

where Δ denotes the first difference operator, β_1 is the measure of the immediate pass-through while β_i represents the short run pass-through reflected in the different lags of the policy rate, λ_i is the autoregressive coefficient of the lagged dependent variable, η_t is the white noise error term, n and m are the optimal number of lags used in the model. $ECT_{t-1} (=br_{t-1} - \beta_0 - \beta_1 pr_{t-1})$ represents the error correction term lagged by one period obtained from the long-run relationship given by equation (15) and captures the extent of the disequilibrium at time $(t-1)$; φ is the coefficient of the error correction term capturing the speed of adjustment of bank rates towards their long run equilibrium level and measures the portion of the disequilibrium that is corrected in the next period; if the coefficient φ is statistically significant and negative, it means that market forces are in operation to restore long run equilibrium after short run disturbances.

Equation (15) corresponds to the conventional linear error-correction model and implicitly assumes that the adjustment speed of the bank rates following a deviation from the long-run equilibrium represented by φ , is symmetric, meaning that it is the same following a positive or negative shock.

However, the short run dynamics may be asymmetric, meaning that the speed of adjustment is different depending on the strength and the direction of the policy shock. Fuertes, Heffernan and Kalotchou (2006), argue that due to structural shocks, exogenous and endogenous factors, the speed of adjustment may be asymmetric with respect to the magnitude and direction of monetary policy action. Therefore, it is important to relax the symmetric assumption in order to assess the true nature of the adjustment dynamics. To account for the potential asymmetry in the adjustment process, this study follows Scholnick (1996), Sander and Kleimeier (2002). The procedure consists of splitting the residuals obtained from the long-run relationship into two series of positive and negative residuals defined as follows:

$$ECT^+ = ECT \text{ if } ECT > 0 \quad (16)$$

$$ECT = 0 \text{ if } ECT < 0$$

and

$$ECT^- = ECT \text{ if } ECT < 0 \quad (17)$$

$$ECT = 0 \text{ if } ECT > 0$$

The asymmetric residuals specified in (16) and (17) are then introduced as separate variables in the error-correction model to obtain the asymmetric short run dynamic model:

$$\Delta br_t = \delta_0 + b_1 \Delta pr_t + \sum_{i=1}^n b_i \Delta pr_{t-i} + \sum_{i=1}^m c_i \Delta br_{t-i} + \varphi_1 ECT^+_{t-1} + \varphi_2 ECT^-_{t-1} + \mu_t \quad (18)$$

where φ_1 and φ_2 are respectively the coefficients of the positive and negative error-correction terms.

The positive error correction term (ECT^+_{t-1}) in equation (18) implies that if the bank rate is above its long-run equilibrium value following a decline in the policy rate, it will start falling in the next period; similarly, the negative error correction term (ECT^-_{t-1}) suggests that if the bank rate is below its equilibrium level following an increase in the policy rate, it will start rising in the subsequent period. The coefficients of the error-correction terms, φ_1 and φ_2 , provide the information on the speed of adjustment of the bank rates during expansionary and contractionary monetary policy.

The presence of asymmetry is tested using the Wald test on the restriction that $\varphi_1 = \varphi_2$ in equation (18). If equality of the two coefficients is not rejected, this implies no asymmetry in the adjustment process, while rejection of equality points to existence of asymmetry. On the other hand, if $\varphi_1 > \varphi_2$, this suggests that banks are quicker to adjust their rates downwards than they are to adjust them upwards, while if $\varphi_2 > \varphi_1$, means that banks would adjust

their rates upwards faster than they are to adjust them downwards.

V. Empirical results and discussion

Time series properties of the data

The Augmented Dickey Fuller (1981) and the Phillips-Perron (1988) unit root tests have been employed to determine whether the bank rates (lending , deposit and interbank rates) and the policy rates (Repo and Treasury bill rates) are stationary or not. The tests have been performed with level and first difference series with only deterministic assumption of constant as the time series on interest rates do not exhibit any trend.

Table 2: Unit root tests with constant: 2008:1- 2016:12

Variables	ADF		PP	
	Level	First difference	Level	First difference
Short-term lending rate	- 4.293981	- 17.22636	- 6.852495	- 37.87146
Medium-term lending rate	- 3.487204	- 14.65414	- 3.167672	- 15.98055
Long-term lending rate	- 3.681175	- 11.05033	- 6.580244	- 81.59973
Deposit rate-1 month	- 5.782765	- 10.66773	- 5.778322	- 42.22669
Deposit rate-3 months	- 2.348815	- 11.79147	- 3.938492	- 15.30330
Deposit rate-6 months	- 3.633511	- 13.18539	- 3.429478	- 14.58730
T-bill rate -1 month	- 1.693834	- 15.07884	- 2.400946	- 14.89926
T-Bill rate-3 months	- 1.828337	- 11.42297	- 1.994364	- 11.36604
T-bill rate-6 months	- 2.191023	- 13.59482	- 2.709599	- 13.61173
Interbank rate	- 1.635134	-10.86784	- 1.850376	- 10.86802
Repo rate	- 1.850841	- 9.351902	- 1.900449	- 9.359472
C Critical value at 1% significance level	- 3.493129	-3.493129	- 3.492523	- 3.493129

From the results of both tests in Table 2, it appears that the series of lending rates and one month deposit rate are stationary in level at 1% significance level , while the policy rates , the interbank , the three and six months deposit rates are found to be non-stationary , i.e I (1). However, all the variables are stationary in first difference.

Testing for co-integration relationship

Once the time series properties of the variables have been identified, the next step of the empirical analysis is to test for the co-integration relationship between the bank rates and the policy rates considered in this study. It is a common phenomenon that many economic time series data are non-stationary but move together over time; in particular, it has been documented in the literature that the bank rates cannot drift too far from the policy rate over a long period, suggesting that the series are bound by a long-run equilibrium relationship (Fuertes and Heffernan, 2008).

Table 3 presents the results of the ARDL bounds test for cointegration. To test for the null hypothesis of no cointegration as well as for the significance of the long-run coefficients in equation (14), the Wald-test (F-test) proposed by Pesaran, Shin and Smith (2001) has been used. Following the procedure explained earlier, equation (14) has been estimated by OLS and the computed F-statistic was compared with tabulated critical values in Pesaran, Shin and Smith (2001). As shown in Table 3, the computed F-statistic test for every pairwise relationship between the selected variables is greater than the upper bound critical value at the 5% significance level, implying rejection of the null hypothesis of no cointegration .The computed F-test statistic varies indeed between 6.25 and 9.58, while the upper bound critical values of the tabulated F-test range between 4.94 and 5.73.

Table 3: ARDL Bounds test for cointegration of deposit, interbank and policy rates

Relationship	Computed F-statistic	10% critical bounds	5% critical bounds
Deposit rate - 1 month			
T-Bill rate-1month	7.39	4.04-4.78	4.94-5.73
Repo rate	9.58	4.04-4.78	4.94-5.73
Deposit rate-3 months			
T-bill rate-3 months	7.11	4.04-4.78	4.94-5.73
Repo rate	7.15	4.04-4.78	4.94-5.73
Deposit rate- 6 months			
T-Bill rate-6months	6.25	4.04	4.94-5.73
Interbank rate			
T-bill rate-3 months	9.29	4.04-4.78	4.94-5.73
Repo rate	9.18	4.04-4.78	4.94-5.73

Note: The bounds test critical values are obtained from Pesaran, Shin and Smith (2001), p.300; Table CI (iii), Case III: unrestricted intercept and trend.

Thus, it emerges from the test that there exists a long-run relationship between the deposit and Treasury bill rates of same maturities on the one hand and between the deposit and the Repo rates, on the other hand; the interbank rate is also cointegrated with the Treasury bill and the Repo rates.

Given the presence of a cointegration relationship between these variables, asymmetric error correction models have been examined. By contrast, the lending rates have been found to be cointegrated with none of the policy rates.

Regression results and discussion

Before proceeding to the discussion of empirical results, it is worth noting that in all regression results related to cointegration as well as to error correctional models, robustness of the estimated models has been assessed and was confirmed by the conventional diagnostic tests, i.e., the Breusch-Godfrey serial correlation LM test, heteroschedasticity test (ARCH test), Jarque-Bera normality and Ramsey Reset specification tests. However some of the models failed to fulfill the normality test, but given the large number of observations (108) involved, this does not invalidate the robustness of the models as argued in Dube and Zhou (2014). The goodness of fit of the models as measured by the adjusted R^2 ranged between 0.279 and 0.439 ; given that the dependent variable is at first difference, this adjusted R^2 is satisfactory (Green ,2003). To determine the lag structure of different models this study relied on the Hendry (1987) general to specific approach by starting with twelve lags and then removing non-significant lags; this implies that for each set of dependent and independent variables, the most parsimonious model has been selected for interpretation.

i). Deposit and interbank rates

Long-run relationship

The results in Table 4 present the ARDL bounds testing estimates of the long-run coefficients of the pairwise relationship between interbank, deposit, and policy rates for which a co-integration relationship has been identified. Depending on the maturity, the estimated long-run pass-through between the deposit and the Treasury bill rates ranges between 0.19 and 0.53, while the pass-through between the deposit rates and Repo rate varies between 0.28 and 0.62. The long-run pass-through from the Repo rate and the three months maturity Treasury bill rate to the interbank rate is respectively 1.24 and 0.86. The six months maturity deposit rate is only cointegrated with the Treasury bill rate of same maturity and exhibits a long-run coefficient of 0.51.

Table 4: ARDL Bounds test results of estimated long-run coefficients

Relationship	T-Bill rate-3 months	T-Bill rate -6 months	Repo rate
<i>Deposit rate-1 month</i>	<i>0.19</i>	-	<i>0.28</i>
<i>Deposit rate-3 months</i>	<i>0.53</i>	-	<i>0.62</i>
<i>Deposit rate-6 months</i>	-	<i>0.51</i>	
<i>Interbank rate</i>	<i>0.86</i>		<i>1.24</i>

According to the above empirical results, only between 19% and 62% of the changes in the policy rates are transmitted to the deposit rates, pointing to an incomplete interest rate pass-through and weakness of the interest rate channel in Rwanda. However, these results show also that the interbank rate is highly sensitive to changes in policy rates, as it exhibits a pass-through of 0.86 with the T-bill rate and even an overshooting pass-through of 1.24 with the Repo rate, meaning that the pass-through from the T-Bill and the Repo rates to interbank is 86% and 124% respectively. The overshooting pass-through of the Repo rate to interbank rate was also found by Sande and Okello (2013) for the case of Uganda, suggesting that monetary policy is more effective in whole sale rate than in retail rates. On the other hand, a strong long-run interest rate pass-through is observed when the three months

deposit rate is associated with the T-bill rate of same maturity and the Repo rate, implying that this category of deposit rate is the most responsive to changes in the policy rates. In a policy perspective, this suggests that in the current NBR monetary policy framework, the Repo rate and the T-bill rates may be considered as the most appropriate monetary policy instruments, but the Repo rate appears to be more effective, since it exerts a stronger impact on deposit and interbank rates. This also indicates that the decision of the Central Bank of Rwanda made since 2008 to use the Repo operations as the main instrument in the open market operations was relevant as it reinforced the monetary transmission mechanism. It is worth noting that knowing the class of assets affected by the monetary policy stance in the banks' portfolio and the specific policy instrument that affects them is crucial for the Central bank.

The significantly higher pass-through of the Repo and Treasury bill rates to the interbank rate is an important information for monetary authorities, since the pass-through of the policy rate to interbank rate is the first step of the entire pass-through process from the policy rate to bank retail rates. Furthermore, depending on the policy rate considered, only a small portion of the changes in the policy rates is transmitted to deposit rates, implying that in Rwanda the interest rate pass-through is incomplete in the deposit market and supports the findings of the earlier study for Rwanda by Kigabo, Mwenese and Bagabe (2016) in which the long-run pass-through from the Treasury bill rate to deposit rates ranged between 0.14 and 0.45.

Short-run asymmetric adjustment

The short run dynamics between the pairs of interest rates has been investigated using non-linear error-correction model as defined in equation (18) for asymmetric adjustment. An asymmetric error-correction term corresponding to each of the long-run relationships presented in Table 5 has been estimated to unveil the possible asymmetric adjustment of short-run interest rate pass-through and the speed of adjustment of the deposit and interbank rates to long-run equilibrium.

Table 5: Results of asymmetric dynamic adjustment

Deposit rate / Policy rate	$\varphi_1 ECT (-I)^+$	$\varphi_2 ECT (-I)^-$	Wald test Null hypothesis $H_0 : \varphi_1 = \varphi_2$
Deposit rate - 1 month/ T-Bill rate-1month	-0.8014 (-5.65)	-0.2854 (-1.41)	3.2335 [0.0721]
Deposit rate-3 months/ T-bill rate-3 months	-0.5220 (-2.96)	-0.1509 (-0.781)	1.3844 [0.2304]
Deposit rate -6 months / T-Bill rate 6 months	-0.2534 (-1.81)	-0.5925 (-3.37)	1.5676 [0.2106]
Deposit rate 1month/ Repo rate	-0.8140 (-5.19)	-0.2641 (-1.81)	4.8427 [0.0278]
Deposit rate-3months / Repo rate	-0.9666 (-2.91)	-0.2462 (-2.45)	3.6194 [0.0571]
Interbank rate/Repo rate	-0.144 (-1.95)	-0.176 (-1.73)	0.0465 [0.829]

Note: In parenthesis are indicated the values of the t-statistic and between brackets is the probability level showing the significance level to reject or not the null hypothesis.

The objective of the analysis is to empirically ascertain whether the speed of adjustment of bank rates is different following a positive or negative shock in the policy rates. To measure the potential asymmetric adjustment of the deposit and interbank rates to changes in the policy rates, equation (18) has been used and the null hypothesis has been tested using the Wald test statistic. The null hypothesis posits that the speed of adjustment is the same following a rise or a cut in the policy rate, implying that the coefficients of the error-correction terms in equation (18) are equal, that is $H_0 : \varphi_1 = \varphi_2$. The results of the error correction terms and Wald test statistics are reported in Table 5.

In Table 5, φ_1 represents the speed of adjustment coefficient associated with a positive deviation when the deposit rate is above its long-run equilibrium value, implying a decrease in the policy rate associated with an expansionary monetary policy and φ_2 represents the speed of adjustment coefficient associated with a negative deviation when the deposit rate is below its long-run equilibrium value, reflecting the implementation of a tight monetary policy through an increase of the policy rate.

The results of the empirical estimates support the evidence of regime switching adjustment of the bank retail rates and point to asymmetric adjustment of the deposit rates to changes in the policy rates in three cases. As shown in Table 5 by the results of the Wald-test statistic, the null hypothesis, $H_0: \varphi_1 = \varphi_2$, has been rejected at 10% significance level when the deposit rate and the Treasury bill rate of one month of maturity are associated on the one hand, and when the deposit rate of three months of maturity is linked to Repo rate, on the other hand. Likewise, the null hypothesis has also been rejected at 5% significance level when the deposit rate of one month of maturity

is associated with the Repo rate. Moreover, the adjustment coefficient, ϕ_1 , is significant in all cases and its magnitude is quite high and varies between -0.8014 and -0.9666, while the adjustment coefficient ϕ_2 is only significant when the deposit rates of one and three months of maturity are associated with the repo rate and its values are -0.2641 and -0.2462 respectively.

Hence in these three cases, the presence of asymmetric adjustment has been demonstrated suggesting that in the other remaining three cases, including three months, six months maturity deposit rates and the interbank rate, the null hypothesis has not been rejected, implying that the adjustment process to long-run equilibrium is symmetric. Furthermore, it is worth noting that in the cases where asymmetric adjustment has been detected, the coefficient, ϕ_1 , is significantly higher than the coefficient ϕ_2 , suggesting that the adjustment dynamic to equilibrium is faster in case of positive shock, reflecting expansionary monetary policy, than in case of negative shock, when tight monetary policy is applied.

Given these results and considering cases where the null hypothesis has been rejected (three out of six), it appears that in Rwanda, the deposit rates exhibit upward rigidity, $\phi_1 > \phi_2$, implying that banks will tend to adjust their deposit rates downward at a faster rate than adjusting them upward. This finding is consistent with the collusive pricing behavior of banks and valid in concentrated market, where banks are in a better position to avoid increase on deposit rates to minimize the cost of their funds (Hannan and Berger, 1991; Scholnick, 1996). Similar results have been found by Samba and Yan (2010) in member countries of the Central African Economic and Monetary Community and Aziakpono and Wilson (2010) in South Africa. The presence of asymmetry in the adjustment process of bank rates may also be attributable to inefficiencies in the banking sector (Fuentes, Heffernan and Kalotchou, 2006).

ii). Lending rates

Long-run and short run relationship

Empirical estimations showed that lending rates were cointegrated with neither of the policy rates; hence the short and long-run pass-through of the policy rate to lending rates has been estimated by means of the transformed autoregressive distributed lag (ADL) model as proposed by Keele and De Boef (2004) on the basis of equations (12) and (13). Fifteen regressions have been run linking each category of lending rate (short, medium and long term) to policy rates. A significant long-run relationship has been identified only between the long term lending rate and the Repo rate and an asymmetric error-correction model has also been estimated, while the other regressions yielded no significant relationships between the variables. The estimated long-run pass-through of the Repo rate to long-term lending rate is as follows:

$$\text{Long term lending rate} = 5.16 + 0.228 \text{ Repo rate} \quad (19)$$

As mentioned above, only in one case, a significant long-run and short run pass-through has been detected between the long term lending rate and the Repo rate. The long-run pass-through estimated on the basis of equation (12) is 0.228 in equation (19), while the short run or immediate pass-through calculated following the error-correction model in equation (13) is 0.315, meaning that only 22.8 % and 31.5 % of the innovation in the Repo rate are transmitted to the long term lending rate in the long and short run respectively. The estimated speed of adjustment in the short run error-correction model is -0.18. The null hypothesis in the asymmetric error correction model has not been rejected; there was indeed no negative error correction term, implying that there is no evidence of asymmetric adjustment in the lending rate since the adjustment process adjusts only to positive deviations from long-run equilibrium value; this result is similar to the finding by Bangura (2011) in the case of Ghana.

Overall, it emerges from the above results that the interest rate pass-through from policy rates to lending rate is incomplete in the short run as well as in the long-run. These results support those found in Kigabo, Mwenese and Bagabe (2016) where the long-run pass-through between the lending and Treasury bill rates was 0.097, while the short run pass-through was estimated at 0.19.

The lack of a cointegration relationship and the weak interest rate pass-through between the policy rates and lending rates confirm the absence of co-movement observed in the developments of the lending and policy rates depicted in Figures 1 and 2. It also suggests that lending rates may be determined by other factors than policy rates.

In a recent policy document published by the National Bank of Rwanda, it was recognized that the “weak responsiveness of the lending rates to the change in the key repo rate is due to, among other factors, high operating costs in the banking sector and high provisions for bad loans despite declining in NPL ratio. In addition, behavior of borrowers such as lack of information on loan conditions and culture of not bargaining with banks has contributed to the rigidities in lending rates charged by banks” (NBR, February 2015).

Kigabo and Barebereho (2008) also concluded that in Rwanda, the volume of non-performing loans and risk aversion, the operating costs and macroeconomic variables (inflation), are among the main determinants of high lending rates and interest rate spread. Similar conclusion was drawn by Kiptui (2014) in his analysis pointing to macroeconomic variables (inflation, GDP growth rate and exchange rate variability) as the main factors influencing the fluctuations of the lending rate and the interest rate spread in Kenya.

VI. Conclusion and policy implications

The objective of this study was to empirically examine the size and the speed of the interest rate pass-through in Rwanda and determine whether the interest rate adjustment dynamics is symmetric or asymmetric.

Drawing on a standard analytical framework and empirical strategies, this research investigated the interest rate pass-through and the adjustment dynamics between the bank retail rates (deposit and lending rates) and the policy rates (Treasury bill and Repo rates). The study used monthly time series covering the period from 2008-1 to 2016-12. Autoregressive distributed lag model, cointegration approach, linear and non-linear error correction models have been employed for empirical analysis.

The results of the study may be summarized as follows. Consistent with most of earlier works for Rwanda and Africa, the estimated long-run and short run pass-through coefficients between the bank retail rates and the policy rates in this study show clearly that the interest rate pass-through is incomplete in Rwanda, highlighting the weakness of the interest rate channel. This suggests an inefficient monetary transmission mechanism in the financial market and poses a serious challenge to the Central bank. On average the pass-through is higher for deposit rates than for lending rates. The incomplete interest rate pass-through between the bank rates in Rwanda may be the result of underdeveloped financial system, relative degree of concentration, low level of competition, structural excess liquidity in the banking sector and high operating costs. However, the pass-through of the Repo rate to the interbank rate was found substantially higher and would then positively affect the transmission mechanism; this finding is crucial since the degree of the response of the interbank rate to changes in the policy rate is the first step of the whole pass-through process.

Concerning the adjustment process of the bank retail rates, this study provided evidence of asymmetric adjustment of deposit rates to changes in policy rates; however this evidence was not supported for the case of lending rates. The results of the study showed in particular that deposit rates exhibit upward stickiness, meaning that banks adjust their deposit rates downward faster following cuts in policy rates, while they are reluctant in revising them upward following an increase in the policy rates. These results are consistent with those found in other studies and lend support to the collusive behavior of banks in the deposit market.

The policy implications of the empirical results of this study are that the effectiveness of the monetary policy transmission to the economy through the interest rate channel may be limited. The weak interest rate pass-through identified in Rwanda implies that to be effective in the current monetary policy framework, cuts or increases of policy rates should be stronger. In this context, being aware of the asymmetric adjustment of the bank retail rates would provide additional information to monetary authorities in the determination of the appropriate timing and instrument before taking policy action. With regard to monetary instruments, the findings of this study suggest that the Repo rate would be the most effective instrument to use given its higher impact on interbank, deposit and lending rates. Hence the role and the share of the repo transactions should be enhanced in the open market operations.

Overall, the findings of this study suggest that to enhance the effectiveness of the monetary policy, the monetary authorities should focus on addressing factors that weaken the transmission of the policy rate changes to bank retail rates. To this effect, reforms in the financial system in Rwanda should be pursued by supporting the development of new financial products and non-bank financial institutions to reduce concentration and increase competition in the financial market. In addition, the monetary authorities should promote and implement policies that will further spur the development of security market to provide alternative sources of saving and funding to firms and individuals mainly relying so far on bank loans and deposits; the efforts currently made to strengthen the capital market through issuance of Government T-Bonds are a step in the right direction. Finally, to enhance the interest rate pass-through and consequently the monetary transmission mechanism, regular communication between the National Bank of Rwanda with banks should further focus on strategies to reduce information asymmetry in the deposit and loan markets, promote efficiency of the banking sector in liquidity management and reducing operating costs, improve the quality of loans through stronger regulation.

REFERENCES:

- Acheampong, K., (2005). Bank interest rate channel of monetary policy transmission in Ghana. Working Paper, 10. Bank of Ghana.
- Ahmad, A.H., Aziz, N. and Rummun, S. (2013). Interest rate pass-through in the UK: Has the transmission mechanism changed during the financial crisis. *Economic Issues*, 18: 17-41.
- Amarasekara, C., (2005). Interest rate pass-through in Sri Lanka. *Central Bank of Sri Lanka Staff Studies*. 35:1-32.
- Andries, N. (2012). Analysis of retail interest rate pass-through in the European countries: the ARDL approach to cointegration. CREM. University of Rennes.
- Aziakpono, M.J. and Wilson, M.K., (2010). Interest rate pass-through and monetary policy regimes in South Africa. Paper for Presentation at the CSAE Conference, 21–23 March, Oxford University, UK.
- Banerjee, A., Bystrov, V. and Mizen, P. (2012). How do anticipated changes to short-term market rates influence banks' interest rates? Evidence from the four major euro area economies. Working Paper 10/03. Centre for

Finance and Credit Markets.

- Bangura, L. (2011). "Adjustment of commercial bank interest rates and effectiveness of monetary policy: evidence from Anglophone West Africa". Master Degree Thesis, Rhodes University.
- Cas, S.M., Menendez, C.A. and Frantischek, F. (2011). The policy interest rate pass-through in Central America. IMF Working Paper, No 11/240.
- Cottarelli, C., Ferri, G. and Generale, A. (1995). Bank lending rates and financial structure in Italy: a case study. IMF Staff Papers, 42: 670-700.
- Cottarelli, C. and Kourelis, A., (1994). Financial structure, bank lending rates, and the transmission mechanism of monetary policy. IMF Staff Paper. 41, 4: 587-623.
- Davoodi, H.R., Dixit, S. and Pinter, G. (2013). Monetary transmission mechanism in the East African Community: an empirical investigation. IMF Working Paper, No 13/39.
- De Bondt, G., (2002). Retail Bank Interest Rate Pass Through: New Evidence at the Euro Area Level. Working Paper Series, No. 136, European Central Bank, Frankfurt, Germany.
- De Bondt, G., Mojon, B. and Valla, N. (2005) Term structure and the sluggishness of retail bank rates in Euro Area countries, ECB working Papers No. 518..
- De Bondt, G., (2005). Interest rate pass-through: empirical results for the Euro area. German Economic Review. 6:37-78.
- Di, D. (2014). Interest rate pass-through and monetary policy transmission mechanism in Thailand. Thesis Dissertation submitted to Auckland University of Technology.
- Dickey, A. and Fuller, W.A. (1981). Likelihood ratio statistics for autoregressive time series with unit root, *Econometrica* 49: 1057-1072.
- Dube, S. and Zhou, Y. (2014). Interest rate pass-through and monetary policy in South Africa: evidence from ARDL and FMLS models. *Journal of Business and Economics*, 5: 1-10.
- Egert, B. and Macdonald, R., (2009). "Monetary transmission mechanism in central and Eastern Europe: Surveying the surveyable. *Journal of Economic Survey*. 23:277-327.
- Egert, B., Crespo-Cuaresma, J. and Reininger, T. (2007). Interest rate pass-through in central and Eastern Europe: reborn from ashes merely to pass-away. *Journal of Policy Modelling*. 29:209-225.
- Enders, W., and Siklos, P. L. (2001). Cointegration and threshold adjustment. *Journal of Business and Economic Statistics*, 19:166-176.
- Espinosa-Vega, M.A. and Rebutti, A. (2003). Retail bank interest rate pass-through: is Chile Atypical? Central Bank of Chile Working Papers No 221.
- Freixas, X. and Rochet, J.C. (2008). *Microeconomics of banking*. 2nd Edition. MIT Press, Cambridge.
- Frenkel, J.A. (1999). No single currency regime is right for all countries or at all times. NBER Working Paper, NO 7338.
- Fuertes, A.M. and Heffernan, A. (2008). Interest rate transmission mechanism in the UK: a comparative analysis across financial firms and products, *International Journal of Finance and Economics*, 14: 45-63.
- Fuertes, A., Heffernan, S. and Kalotchou, E. (2006). Bank retail rate response to the policy rate: time variation, regime switching and curvature. London: City University Press.
- Gambacorta, L. (2008). How do banks set interest rates?. *European Economic Review*, 52: 792-819.
- Gigineishvili, N. (2011). Determinants of interest rate pass-through: do macroeconomic conditions and financial market structure matter? International Monetary Fund, Working Paper NO 176.
- Greene W. (2003). *Econometrics Analysis*. 5th Ed. Prentice Hall Publication. New Jersey.
- Hannan, T.H. and Berger, A.N., (1991). The rigidity of prices: Evidence from banking Industry. *The American Economic Review*, 81:938-945.
- Hendry, D.F. (1987). Econometric methodology: A personal perspective. In T.F. Bewley (Ed.), *Advances in Econometrics*, Chapter 10. Cambridge: Cambridge University Press.
- Illes, A., Lombardi, M. and Mizen, P. (2015). Why did the bank lending rates diverge from policy rates after the financial crisis? BIS Working Papers No 486.
- Jankee, K., (2005). Nonlinearities in the adjustments of commercial banks' retail rates to interbank rates: The case for Mauritius. *The IUP Journal of Financial Economics*, 3:37-53.
- Karagiannis, S., Panagopoulos, Y. and Vlamis, P., (2010). Interest rate pass-through in Europe and the US: Monetary policy after the financial crisis. *Journal of Policy Modelling*, 32:323-338.
- Keele, L. and De Boef, S. (2004). Not just for cointegration: error correction models with stationary data. Department of Political Science and International Relations, Oxford University.
- Khemraj, T. (2007). What does excess bank liquidity say about the loan market in less developed countries. DESA Working Paper No 60.
- Kigabo, T. and Barebereho, J. (2008), Determinants of banking interest rate spreads in Rwanda, *BNR Economic Review*, 2: 68-92.
- Kigabo, R.T., Munyankindi, P. and Amahoro, A. (2008). Monetary transmission mechanism in Rwanda. *BNR*

- Economic Review, 2: 34-66.
- Kigabo, R.T., Mwenese, B. and Bagabe, J. (2016). Interest rate pass-through in Rwanda. *BNR Economic Review*, 8:1-23.
- Kiptui, C.M., (2014). Determinants of interest rates spread: some empirical evidence from Kenya's banking sector, *International Business Research*, 7: 94-107.
- Kwapil, C., and Scharler, J. (2010). Interest rate pass-through, monetary policy rules and macroeconomic stability. *Journal of International Money and Finance*, 29:236-251.
- Lowe, P and Rohling, T. (1992). Loan rate riskiness: theory and evidence. Research Discussion Paper. Reserve Bank of Australia.
- Makambi, S.A., Wawire, N.H.W. and Omolo, J.O. (2013). Nature and dynamics of adjustment of commercial banks' retail rates to monetary policy changes in Kenya. *International Journal of Business and Social Science*, 4: 49-75.
- Mbowe, W.E. (2015). Monetary policy interest rate pass-through to retail bank rates in Tanzania. Bank of Tanzania Working Paper Series, N0 4.
- Misati, R., Nyamongo, E. and Kamau, A. (2011). Interest rate pass-through in Kenya. *International Journal of Development and Finance*, 10: 170-182.
- Mohanty, M.S and Turner, P. (2008). Monetary policy transmission in emerging market economies: what is new? BIS Papers Chapters, in BIS (ed.), *Transmission mechanism of monetary policy in Emerging Economies*, 35:1-59.
- Mojon, B., (2000). Financial Structure and the Interest Rate Channel of ECB Monetary Policy. European Central Bank Working Paper, European Central Bank, No. 40
- NBR, Annual Report, July 2015 - June 2016.
- NBR, Monetary Policy and Financial Stability Statement (MPFSS), February 2015.
- NBR, Policy and Financial Stability Statement (MPFSS), August 2017.
- Neumark, D. and Sharpe, S., (1992). Market structure and the nature of price rigidity: Evidence from the market for consumer deposits. *The Quarterly Journal of Economics*. 107: 657-680.
- Ogundipe, A.A. and Alege, P.O. (2013). Interest rate pass-through to macroeconomic variables: the Nigerian experience, *International Journal of Economics and Finance*, 5: 18-35.
- Pesaran, M.H., Shin, Y. and Smith, R.J. (2001). Bounds testing approaches to the analysis of level relationships. *Journal of Applied Econometrics*, 16: 289-326.
- Phillips, P.C.B. and Perron, P. (1988). Testing for a unit root in time series regression. *Biometrika*, 75:335-346.
- Republic of Rwanda, Official Gazette N0 44 of 04/11/2013.
- Republic of Rwanda, (December 30, 1998), Letter of Intent to the International Monetary Fund.
- Rotemberg, J.J. and Saloner G. (1987). The relative rigidity of monopoly pricing. *American Economic Review*, 77:917-926.
- Samba, M.C. and Yan, Y., (2010). Interest rate pass-through in the Central African Economic and Monetary Community (CEMAC) Area: Evidence from an ADRL Analysis. *International Journal of Business and Management*, 5: 31-41.
- Sande, D. and Okello, J.A. (2013). Interest rate pass-through in Uganda. Bank of Uganda Working Paper No 2.
- Sander, H. and Kleimeier, S. (2002). Asymmetric adjustment of commercial bank interest rates in the Euro area: An empirical investigation into interest rate pass-through. *Kredit und Kapital*. 35:161-192.
- Sander, H. and Kleimeier, S. (2004). Convergence in Euro-zone retail banking? What interest rate pass-through tells us about monetary policy transmission, competition and integration? *Journal of International Money and Finance*. 23:461-492.
- Sander, H. and Kleimeier, S. (2006). Interest rate pass-through in the common monetary area of the SACU countries. *South African Journal of Economics*, 74: 215-229.
- Sanusi, A.R., (2010). Interest rate pass-through and the efficiency of monetary policy in Nigeria. Department of Economics, Ahmadu Bello University, Zaira, Nigeria.
- Scholnick, B. (1996). Asymmetric adjustment of commercial bank interest rates: evidence from Malaysia and Singapore. *Journal of International Money and Finance*. 15:485-496.
- Sheefeni, J.P.S. (2013). Interest rate pass-through in Namibia. *Journal of Emerging Issues in Economics, Finance and Banking*, 2: 685-703.
- Stiglitz, J and Weiss A. (1981). Credit rationing in markets with imperfect information. *American Economic Review*, 71:393-410.
- Tai, P.N., Sek, S.K. and Har, W.M. (2012). Interest rate pass-through and monetary transmission in Asia. *International Journal of Economics and Finance*, 4: 163-174.
- Wooldridge, J.M. (2003). *Introductory econometrics: A modern approach*, 2nd Edition, Massachusetts: MIT Press.