

# Need for the Determination of the Nigerian Fault Lines

ONWUZULIGBO, Chukwubueze U.\* and ONO, Matthew N.

Department of Surveying and Geoinformatics, Nnamdi Azikiwe University, Awka, Nigeria

## Abstract

Earthquakes and Tremors are Tectonic activities traced to Crustal Motions with roots in the Continental Drift Theory. These activities occur mostly at Plate Boundaries and along or close to Fault Lines. Nigeria was erroneously considered aseismic in the past, but studies have shown that Nigeria was never aseismic as information on different Tremors and Earthquakes abound. The recent occurrences of Tremors in Abuja, the Nation's Capital, call for a serious attention towards the definition of the Nigerian Fault Lines. An attempt towards the determination of the Fault Lines is made, using the Non-Geodetic and Geodetic Methods. The Non-Geodetic Method Seeks to connect the Epicenters of different Earthquakes and Tremors on record, in order to present a possible set of Fault Lines. Three Fault Lines, The Western Nigeria Fault Line, the Mid Nigeria Fault Line and the Eastern Nigeria Fault Lines were proposed. The Geodetic Method adopted the use of archived GNSS data from the Nigerian CORS stations between 2012 and 2014. Fourteen sites, ABUZ, BKFP, GCCT, CLBR, FPNO, FUTA, FUTY, GEMB, HUKP, MDGR, OSGF, RUST, ULAG and UNEC, were used for this experiment, and ten IGS stations, DEAR, ABPO, RAMO, DARK, MELI, ASCG, MOIU, ZAMB, NOT1, BHR4, were used for Network Stabilization in the experiment conducted with the GAMIT/GLOBK Software. The Mean Horizontal Velocity of Nigeria for the period was  $22.5625 \pm 0.32583$  mm/yr East,  $18.93 \pm 0.23417$  mm/yr North, found to agree with Bawa, Ojigi and Dodo (2018) and Altamimi *et al* (2011). The Analysis of the Position Solution, showed that stations along a particular line, share similar direction of motion, which agrees with the Non-Geodetic Proposal. It was recommended that in order to adequately and accurately determine the Fault System in Nigeria, about three times the existing number of CORS Stations must be established, and their data made readily available to researchers.

**Keywords:** Earthquakes, Tremors, Fault Lines, GAMIT/GLOBK

**DOI:** 10.7176/JEES/11-10-05

**Publication date:** October 31<sup>st</sup> 2021

## 1.0 Introduction

Earthquakes and tremors are some of the most frequent natural disasters that threaten the lives and property of man in the earth today. The cause of these disasters have their roots explained in the continental drift theory (Ingolfsson, 2008) Researches have been found to agree that they are known to have their epicenters along plate boundaries and fault lines (Akkar *et al*, 2010, Reilinger and McClusky 2011, Cetin *et al*, 2014). The human and economic loss caused by these activities is enormous. According to Hackl, Malservisi and Wdowinski (2009), the 1994,  $M_w=6.7$  Northridge and the 1995,  $M_w=6.8$  Kobe earthquakes caused unprecedented damage of more than US \$40 billion and US \$100 billion, respectively. Also Akkar *et al* (2010) recorded that forty-two people lost their lives and 137 were injured during the  $M_w = 6.1$  earthquake that occurred in the Elazığ region of Eastern Turkey on 8 March 2010 at 02:32:34 UTC. Furthermore, Nwankwoala and Orji (2018) indicated the extent of damages felt in the events of different occurrences in Nigeria.

Nigeria lies on the eastern flank of the Atlantic Ocean, and according to Akpan and Yakubu (2010), the Atlantic Ocean margins have been opening consistently since Jurassic times. Unlike the Pacific Ocean margins which are characterized by subduction tectonics and occurrence of devastating earthquakes (convergent boundary), the Atlantic margins are generally thought to be quiet (divergent boundary) and as a result, there was little consciousness and preparedness for earthquake occurrences and mitigation in Nigeria. Against the backdrop of being perceived as aseismic, there have been several earthquakes and tremors in Nigeria (Akpan and Yakubu, 2010, Tsalha *et al*, 2015, Afegbua in Orakpo, 2017, Nwankwoala and Orji, 2018). Table 1 illustrates the reported cases of earthquakes and tremors in Nigeria, locations they were felt, the magnitude or intensity picked/felt and their probable epicenters.

With the attendant loss of lives and property involved in the events of these natural disasters, it is highly important and should be paramount in the priority list of any disaster mitigation and control agency that the fault lines be defined, monitored and be considered in the planning and siting of major developmental projects. The definition of these fault lines, therefore, cannot be over emphasized. It is only the first step towards the reduction of the high risks of loss of lives and properties on the event of these disasters.

Table 1: Historical Record of Earthquakes and Tremors in Nigeria from 1900 till Date

S/N	DATE (m/d/yy)	TOWN	STATE	INTENSITY/MAGNITUDE	PROBABLE EPICENTER	LONG	LAT
1	4/16/1905	Warri, Ohafia	Delta, Abia			05 45' 07 47'	05 31' 05 37'
2	6/22/1939	Lagos, Ibadan, Ile-Ife	Lagos, Oyo, Osun	6.5(ML)	Akwapim Fault in Ghana	03 23'	06 30'
3	5/1/1905	Ibadan	Oyo		Close to Ibadan		
4	5/2/1905	Ibadan	Oyo		Close to Ibadan		
5	7/2/1961	Ohafia	Abia		Close to Ohafia	07 47'	05 37'
6	12/21/1963	Ijebu-Ode	Ogun	V	Close to Ijebu-Ode		
7	7/1/1975	Dambata	Kano			08 31'	12 25'
8	6/3/1905	Kundunu	Kano	III		08 24'	11 48'
9	10/16/1982	Jalingo, Gembu	Taraba	III	Close to Cameroun Volcanic Line		
10	7/12/1984	Ijebu Remo	Ogun	IV	Close to Ijebu-Ode		
11	7/28/1984	Ijebu-Ode, Ibadan, Shagamu, Abeokuta	Ogun, Oyo	VI	Close to Ijebu-Ode	03 55'	6 48'
12	8/2/1984	Ibadan, Oyo, Ijebu-Ode, Shagamu, Abeokuta, Ijebu Remo	Oyo, Ogun	V	Close to Ijebu-Ode	03 22'	07 11'
13	12/8/1984	Yola	Adamawa	III	Close to Cameroun Volcanic Line	12 27'	9 14'
14	6/18/1985	Kombani-Yaya	Bauchi	V	Kombani-Yaya	11 00'	10 02'
15	6/8/1905	Obi	Benue	III	Close to Obi	08 46'	08 22'
16	6/8/1905	Abeokuta	Ogun				
17	1/27/1987	Gembu	Taraba	V	Close to Cameroun Volcanic Line	11 15'	06 42'
18	3/19/1987	Akko	Gombe	IV	Close to Akko	10 57'	10 17'
19	5/24/1987	Kurba	Bauchi	III	Close to Kurba	10 12'	11 17'
20	4/1/1988	Amazu Ede-Oballa	Enugu				
21	5/14/1988	Lagos	Lagos	V	Close to Lagos		
22	9/1/1988	Osererun Hills	Gombe				
23	4/1/1990	Jere	Kaduna	V			
24	6/27/1990	Ibadan	Oyo	3.7(ML)	Close to Ijebu-Ode	03 58'	7 22'
25	7/11/1994	Ijebu-Ode, Dan Gulbi	Ogun, Zamfara	4.2(ML)	Dan Gulbi		
26	6/19/1905	Okitipupa	Ondo	IV	Close to Okitipupa Ridge		
27	3/7/2000	Ibadan, Oyo, Akure, Okitipupa, Abeokuta, Ijebu-Ode, Shagamu	Oyo, Ondo, Ogun	4.5(ML)	Close to Okitipupa		
28	3/13/2000	Benin	Edo	IV	Benin City (55km from Benin)		
29	5/7/2000	Akure	Ondo	IV	Close to Okitipupa		
30	5/19/2001	Lagos	Lagos	IV	Close to Lagos City		
31	8/8/2000	Lagos	Lagos	IV	Lagos		
32	8/15/2000	Jushi-Kwari	Kaduna	III	Close to Jushi-Kwari Village	07 42'	14 03'
33	3/1/2005	Yola	Adamawa	III	Close to Cameroun Volcanic Line		
34	3/25/2006	Lumpa	Niger	III	Close to Ifewara Zungeru Fault		
35	7/1/1905	Saki	Oyo	III – IV			
36	7/1/1905	Abeokuta	Ogun				
37	11/5/2011	Abeokuta	Ogun	4.4M	Close to Abeokuta		
38	9/12/2016	Kwoi, Border Communities between Bayelsa & Rivers (Igbogene)	Kaduna, Rivers, Bayelsa	2.6 - 3.0 M			
39	9/5/2018 - 9/8/2018	Mpape	Abuja	II – IV			
40	3/9/2019	Mpape	Abuja				

Source: Compiled from Akpan and Yakubu (2010), Eze *et al* (2011), Tsalha *et al* (2015), and Nwankwoala and Orji (2018)

## 2.0 Materials and Methods.

In order to define the tectonic fault lines, one can adopt two major approaches, the non-geodetic approach, and the geodetic approach.

### 2.1 Non-geodetic Approach

The non-geodetic approach involves the connection of the epicenters of previous earthquakes and tremors. Akpan and Yakubu (2010) adopted this method in their presentation of the Ifewara-Zungeru fault (figure 1). Eze *et al* (2011) further adopted this method in proposing possible fault lines in figure 2. To define the fault lines using this approach, the epicenters recorded in Table 1 were plotted on a map of Nigeria using ArcGIS 10.2 and lines of possible faults drawn.

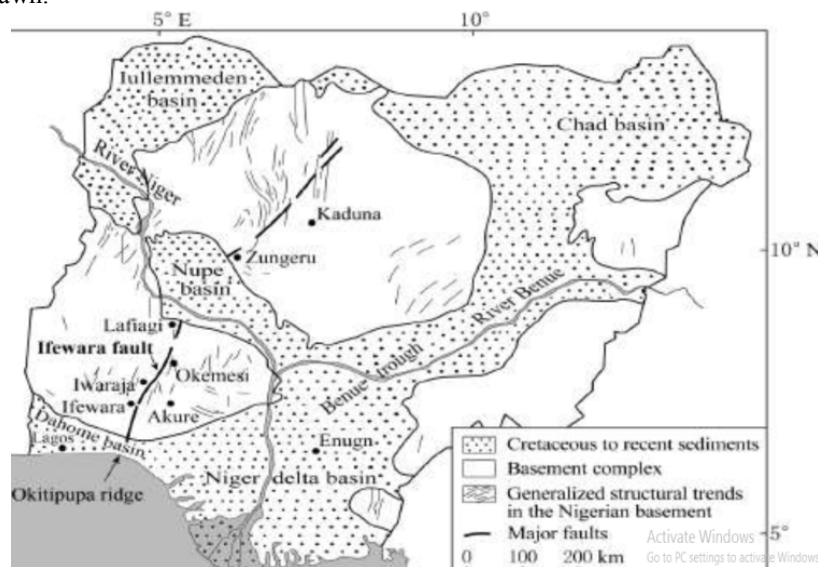


Figure 1: Map of Nigeria Showing the Ifewara- Zungeru Fault

Source: Akpan and Yakubu (2010)

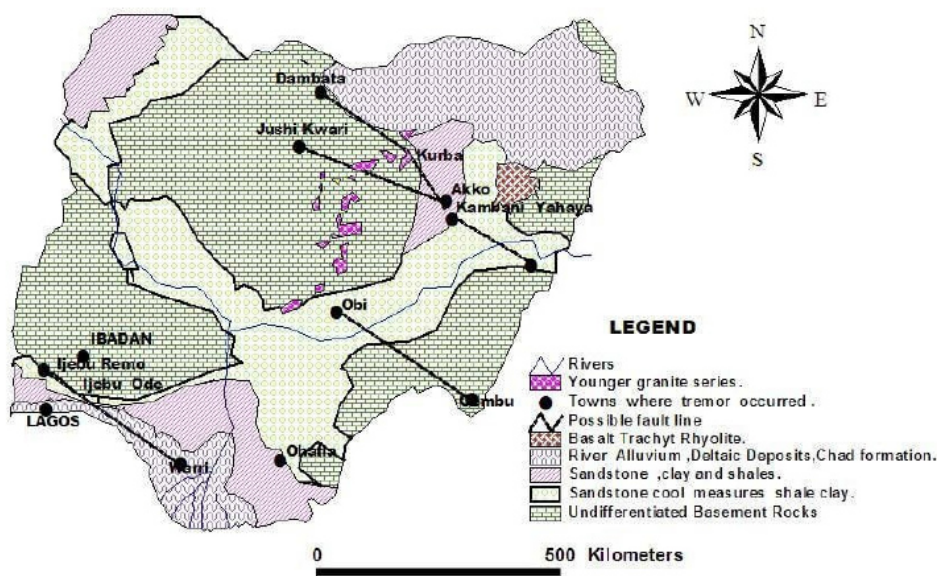


Figure 2: Map of Nigeria Showing Possible Fault Lines

Source: Eze et. al. (2011)

This method is not particularly accurate because it cannot be used for effective planning of projects, since it is only hypothetical. A fault line that is not hypothetical should possess the ability to be geographically located and possibly marked off. This would make it possible to factor it in land use planning.

## 2.2 The Geodetic Method

This involves the use of Geodetic techniques, such as Interferometric Synthetic Aperture Radar (InSAR), Global Navigation Satellite System (GNSS), and Satellite Altimetry, to monitor an area over time and the time series of the observation carried out in order to depict the velocities of the tectonic plates and the sharp difference in directions depicting the presence of fault lines. Aung *et al* (2016) and Wei, Jiang and Wu (2015) adopted this method in the study of Sagaing Fault in Myanmar, and the Kunlun Mountain Pass West (KMPW) Ms8.1 earthquake in 2001 and the Wenchuan Ms8.0 earthquake in 2008 in China respectively.

In this research, the GNSS technique was used, GNSS data from the Nigerian Continuously Observing Reference (COR) Stations for years 2012 through 2014 were acquired from the Office of the Surveyor General of the Federation (OSGOF). The sites used are ABUZ, BKFP, GCCT, CLBR, FPNO, FUTA, FUTY, GEMB, HUKP, MDGR, OSGF, RUST, ULAG AND UNEC. The GAMIT/GLOBK software package was used for the analysis. Ten International Geodetic Network (IGS) stations, DEAR, ABPO, RAMO, DARK, MELI, ASCG, MOIU, ZAMB, NOT1, BHR4, were used as stabilization sites. Their Receiver Independent Exchange Format (RINEX) data, Broadcast Ephemeris data (BDRC), and Orbit Ephemeris data were downloaded from SOPAC and CDDIS archives. These stations were chosen in a manner that ensured geometric balance for the stabilization. Ten were chosen in order to provide redundant measurements, in case one or two stations were to be excluded from the experiment. This method was found in Bawa, Ojigi and Dodo (2018), Stamps, Saria and Kreemer (2016), Aung *et al* (2016) and many other works.

## 3.0 Result and Analysis

Figure 3 shows a map of Nigeria with the locations of previous earthquakes and tremors used to identify the possible fault lines. From the spread and cluster of the previous tremors, three possible fault lines are proposed.

- i. **The Western Nigeria Fault Line:** This line runs from the Atlantic Ocean, through Lagos, Ogun, Oyo, Kwara, Niger, Kaduna, Kano, and Jigawa states. It is akin to the Ifewara-Zungeru fault proposed by Akpan and Yakubu (2010). However, figure 3 and the records in Table 1 show that neither earthquake nor tremor was recorded in Osun State where Ifewara is located. It is in fact improper to insinuate that the fault line runs from Ijebu Ode through Ifewara as posited by Akpan and Yakubu (2010) when there is no epicenter in Osun rather close to Ibadan in Oyo State (1905 Tremor) and what was felt in Ile-Ife in 1936 the Ghanaian 6.5ML Earthquake with its epicenter in Akwapim Fault in Ghana.
- ii. **The Mid Nigeria Fault Line:** This line also runs from the Atlantic Ocean, through Ondo (close to Okitipupa), Edo, Kogi, Abuja, Kaduna (Southern Kaduna), Bauchi, and Yobe states. This fault line is feared to be active, because the most recent tremors, as seen in Table 1, lie along this line. This is perceived to be the most active fault, owing to the recent Abuja Tremors.
- iii. **The Eastern Nigeria Fault Line:** This fault line runs along the Abakaliki and Benue Troughs regarded by Nwankwoala and Orji (2018) as an example of a failed rift arm following the opening of the Southern Atlantic. They opined that extensional stress due to upwelling of magma beneath the region must have deformed the fault and created faults. After the extensional sets ceased, the weakened crust was covered with sediments over millions of years. This fault line runs through Bayelsa (Igbogene), Rivers, Abia (Ohafia), Enugu (Ede-Oballa), Nassarawa (Obi) and Gombe States.

The other Tremor sites in Adamawa and Taraba states were as a result of their proximity to the Cameronian Volcanic line as shown in Table 1 for the Gembu and Jalingo tremors of 1982 and Yola tremor of 1984 and 2005.



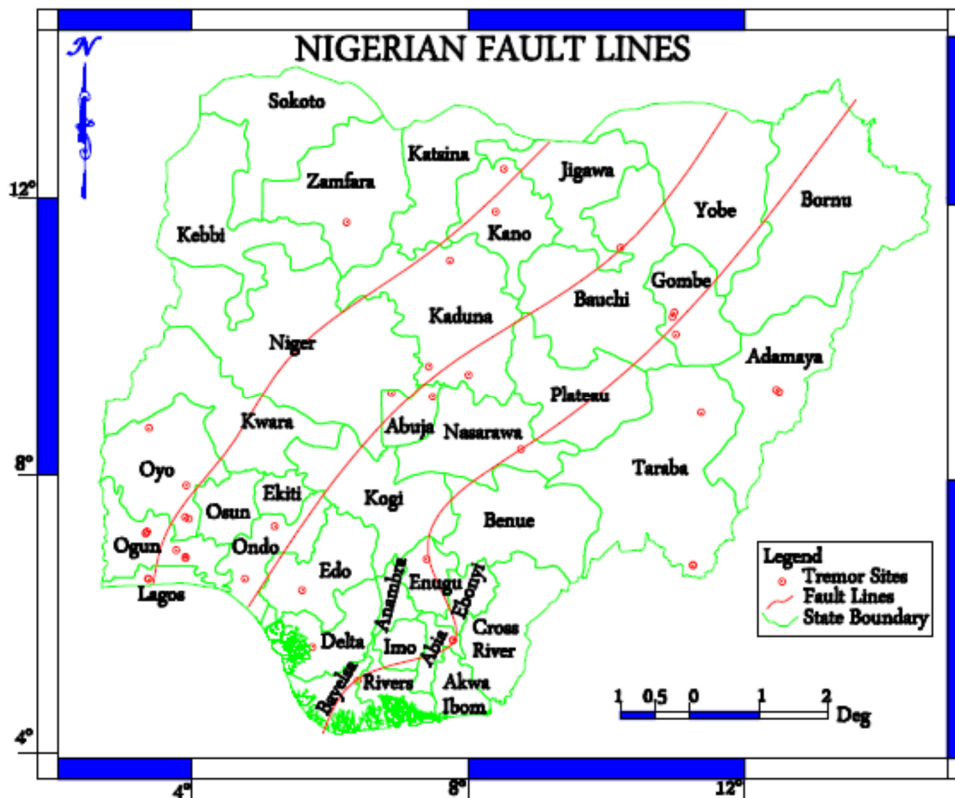


Figure 3: Map of Nigeria Showing the Fault Lines

From the Geodetic analysis, the Mean Horizontal Velocity of Nigerian for the period was  $22.5625 \pm 0.32583 \text{ mm/yr}$  East,  $18.93 \pm 0.23417 \text{ mm/yr}$  North. This result was found to agree with Bawa, Ojigi and Dodo (2018) and Altamimi *et al* (2011). From the preliminary results, it was discovered that the MDGR site was giving outrageous values and it was regarded as an outlier and excluded from the experiment.

The Position Solution from the *globk\_vel.org* file was extracted and the Bearing and Distance covered by the NigNet Sites were computed from the change in Eastings (dE) and Change in Northings (dN) and shown in Table 2.

Figure 4 is the Velocity Plot for the experiment from 2012 to 2014. It is evident from Table 2 and Figure 4 that although the direction of all the stations used for the Velocity plot are in the North East direction, the bearings of the motions are not the same. The stations with the most deviating bearings from the majority are the CGGT and the RUST stations at  $67^\circ 5' 37.8492''$  and  $83^\circ 15' 56.7288''$  respectively whose accuracies were also found to be poor as a result of very few GNSS logs. However, it is interesting to note that the ten degrees ( $10^\circ$ ) range of change in bearing of the different displacements is wide enough to suggest possible presence of fault lines.

Table 2: Bearing and Distances of the Motions

S/N	Site	Bearing	Distances
1	FUTY GPS	$52^\circ 57' 50.8248''$	13.26575m
2	GEMB GPS	$49^\circ 53' 42.7956''$	12.95762m
3	CGGT GPS	$67^\circ 5' 37.8492''$	15.94302m
4	CLBR GPS	$53^\circ 39' 32.2956''$	13.48184m
5	ABUZ GPS	$45^\circ 51' 23.9472''$	19.89774m
6	HUKP GPS	$46^\circ 58' 17.4432''$	24.95676m
7	UNEC GPS	$54^\circ 12' 0.0108''$	13.33942m
8	OSGF GPS	$54^\circ 17' 1.4568''$	13.1856m
9	FPNO GPS	$56^\circ 32' 40.8552''$	14.55953m
10	RUST GPS	$83^\circ 15' 56.7288''$	8.549854m
11	FUTA GPS	$47^\circ 39' 21.6216''$	14.46029m
12	BKFP GPS	$54^\circ 5' 50.4852''$	12.81093m
13	ULAG GPS	$55^\circ 59' 26.3508''$	13.09045m

It can be deduced that most of the stations along a particular line, appear to have the same direction of motion. UNEC (Enugu), FPNO (Owerri), CLBR (Calabar) and OSGF (Abuja) have bearings of  $54^\circ 12' 0.0108''$ ,

56°32'40.8552", 53°39'32.2956" and 54°17'1.4568" respectively. ABUZ (Kaduna) and HUKP (Katsina) have the bearings 45°51'23.9472" and 46°58'17.4432" respectively. FUTY (Yola) and GEMB (Gembu) have 52°57'50.8248" and 49°53'42.7956" respectively. Most interestingly, whereas the directions of ULAG (Lagos) and BKFP (Birin-Kebbi) were similar, 54°5'50.4852" and 55°59'26.3508" respectively, FUTA (Akure) is 47°39'21.6216" this is indicative of an existing (possibly active) fault between Lagos – Birin-Kebbi and Akure – ABUZ sections (the Ifewara – Zungeru Fault).

#### 4.0 Conclusion

The evaluation of the Geodetic method of fault determination used in this experiment agrees with the Non-Geodetic Method. It can then be concluded that there are indeed more than one fault lines in Nigeria. The Mid Nigerian Fault Line appears to be the most active fault line, given the recent tectonic activities around Abuja. This is closely followed by the Western Nigerian Fault Line given the date of the most recent tectonic activity along the line to be the Abeokuta 4.4M in 2011. The Eastern Nigeria Fault Line is adjudged the most inactive fault line. There is however a dire need to establish more than five times the number of COR Stations in Nigeria. The Data from those stations should be made readily available to researchers, as data availability was the greatest challenge for this experiment. New stations to be established, should concentrate around the three proposed fault lines to help in further investigations of tectonic activities within the country.

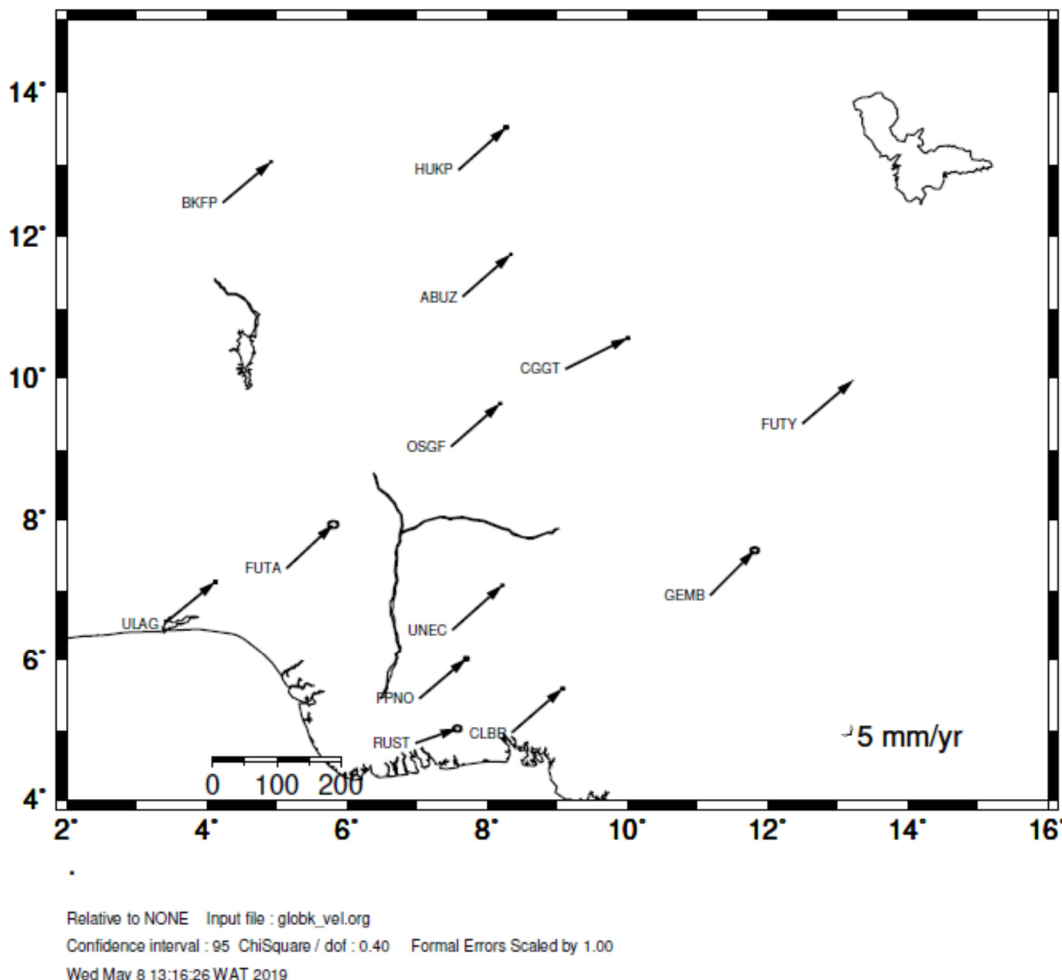


Figure 4: Velocity Plot of Nigeria between 2012 and 2014

#### References

- Afegbua in Orakpo E. (2017): Earthquake in Nigeria: Measures to Avert Devastating Impacts-Experts., *Vanguard* January 4, 2017. Online Version, <https://www.vanguardngr.com/2017/01/earthquake-nigeria-measures-avert-devastating-impacts-experts/> Accessed 26<sup>th</sup> Nov. 2017.
- Akkar S., Aldemir A., Askan A., Bakir S., Canbay E., Demirel O., Erberik A., Gülerce Z., Gülkan P., Kalkan E., Prakash S., Sandikkaya A., Sevilgen V., Uğurhan B., and Yenier E. (2010): Earthquake: Observations on Ground Motions and Building Damage. *Seismological Research Letters* 82(1)doi:10.1785/gssrl.82.1.42
- Akpan O. U. and Yakubu T. A. (2010): A Review of Earthquake Occurrences and Observations in Nigeria.

- Earthquake Science*. June 2010, 23 (3), 289–294. <https://doi.org/10.1007/s11589-010-0725-7> Accessed 26th Nov. 2017.
- Altamimi Z., Collilieux X., and Metivier L. (2011): ITRF 2008: An Improved Solution of the International Reference Frame. *Journal of Geodesy* 85, 457 – 573. <https://doi:10.1007/s00190-011-0444-4>
- Aung P. S., Satirapod C. and Andrei C. O. (2016): Sagaing Fault slip and Deformation in Myanmar observed by continuous GPS measurements. *Geodesy and Geodynamics* 2016 7 (1), 56-63
- Bawa, Ojigi and Dodo (2018), GPS Velocity Time Series of NigNet CORS. *Nigerian Journal of Geodesy*, 2 (2), 163 - 180
- Cetin, E., Cakir Z., Meghraoui M., Ergintav S., and Akoglu A. M. (2014): Extent and distribution of aseismic slip on the Ismetpas, a segment of the North Anatolian Fault (Turkey) from Persistent Scattered InSAR, *Geochem. Geophys. Geosyst.*, 15, 2883–2894, doi:10.1002/2014GC005307.
- Eze C L, Sunday V N, Ugwu S A, Uko E D and Ngah S A (2011), “Mechanical Model for Nigeria Intraplate Earth Tremors. Articles, Disasters, Management Theme”, Earth Observation, Port-Harcourt, IEEE Oceanic Engineering Society.
- Hackl M., Malservisi R. and Wdowinski S. (2009): Strain Rate Patterns from Dense GPS Networks. *Natural Hazards and Earth System Sciences*. Copernicus Publications on behalf of the European Geosciences Union. 17 July 2009. (1177 - 1187)
- Ingolfsson O., (2008): *Plate Tectonics and Continental Drift*. Online Version. <https://docplayer.net/24150854-Plate-tectonics-and-continental-drift-jardsaga-1-saga-lifs-og-lands-olafur-ingolfsson.html> Accessed 6th February 2018
- Nwankwoala H. O. and Orji O. M. (2018): An Overview of Earthquakes and Tremors in Nigeria: Occurrences, Distributions and Implications for Monitoring. *International Journal of Geology & Earth Sciences*, 2018 4(4) doi:10.32937/IJGES.4.4.2018.56-76.
- Reilinger R. and McClusky S. (2011): Nubia–Arabia–Eurasia plate motions and the dynamics of Mediterranean and Middle East Tectonics. *Geophysical Journal International* 186, 971–979. doi: 10.1111/j.1365-246X.2011.05133.x Accessed 30<sup>th</sup> January, 2019.
- Stamps D. S., Saria E and Kreemer C (2016), *A Geodetic Strain Rate Model for the East African Rift System*. *Scientific Reports* 2018 8(732) 1-8
- Tsalha M S, Lar U A, Yakubu T A, Umar A K and Duncan D (2015), “The Review of the Historical and Recent Seismic Activity in Nigeria. IOSR”, *Journal of Applied Geology and Geophysics*, e-ISSN; 2321-0990, Vol.3, No. 1, pp. 48-56.
- Wei W., Jiang Z., and Wu Y. (2015): Cognitions and Questions Regarding Crustal Deformation and Location Forecasts of Strong Earthquakes. *Geodesy and Geodynamics* 2015, x(x), 1-10 [http://www.jgg09.com/jweb\\_ddcl\\_en/EN/volumn/home.shtml](http://www.jgg09.com/jweb_ddcl_en/EN/volumn/home.shtml)