

# Investigation of the Effect of the Thermal Wall Thickness on its Back Surface Temperature for a Poultry Brooding Pen Heated by Trombe Wall

Pius Okpani

Department of Industrial Physics, Ebonyi State University, Abakaliki, Nigeria

Tel:+2347039542254

E-mail : [gmpiusokpani@gmail.com](mailto:gmpiusokpani@gmail.com)

## Abstract

This study was undertaken to use computer simulation to determine the effect of the thermal wall thickness on the hourly temperature variation in the wall back surface of a large scale poultry brooding pen heated solely by the Trombe wall system. Trombe walls of thicknesses 20cm, 25cm, 30cm, 35cm, 40cm, and 45cm were investigated in this work. It was found that the back surface of the 20cm thick wall had the highest average temperature of 45.13.00°C while the back surface of the 45cm thick wall gave the lowest average temperature of 34.58°C. These values show that, in all cases, the optimum brooding temperature requirement could be obtained easily. From these results, it was concluded that the thickness of the wall has significant effect on the temperature of back surface .

**Keywords:** Trombe wall, computer simulation, thermal wall back surface temperature, hourly temperature variation, poultry brooding pen

## 1. Introduction

There is a growing need for protein to feed the rapidly expanding population in developing countries. This has caused farmers and scientists to pay more attention to poultry production, particularly chickens which are raised for both meat and eggs (Olaniyan, 2004a; Agbo, 2004; Olaniyan, 2004b). But, the current trend in the prices of the two products – chicken and eggs – indicates that there is a widening gap between demand and supply. This is attributed to such factors as high-energy consumption cost as well as inefficient and inappropriate production technology employed by the farmers. This technology includes the use of conventional sources of energy for the brooding of the chicks. The sources are electricity and fossil fuels, both of which are not only non-renewable sources of energy, but also pollute the environment in which the birds are brooded (Okonkwo, 1993; Okonkwo and Aguwamba, 1997).

A very good solution to this problem is to use a source of energy that is renewable, affordable, and environmentally friendly for poultry chick brooding which is the most delicate period in poultry production. The energy from the sun meets these requirements.

The sun is an inexhaustible source of energy having at present enough capacity to continue to emit into space  $3.86 \times 10^{23}$  J of energy every second for the next four to five billion years (Morrison et al., 1995; Nichelson, 1999; Morgan, 1962). Of this total, only a tiny fraction,  $1.7 \times 10^{17}$  J/s, is received by the Earth and its atmosphere. A world population of 10 billion with a total power need per person of 10KW would require about  $10^{14}$ W. It is thus apparent that if the irradiance on only 1 percent of the earth's surface could be converted into useful energy with 10 percent efficiency, solar energy could provide the energy needs of all the people on Earth..

However, large-scale utilization of solar energy is fraught with problems due to two main limitations of solar energy. The first limitation is the low flux density of solar radiation. This necessitates the use of large surfaces to collect solar energy. The second limitation is its intermittency. Solar energy has a regular daily cycle, a regular annual cycle and is unavailable during period of bad weather. These daily and seasonal variations in irradiance, exacerbated by variations due to weather introduce special problems in storage and distribution of this energy which are entirely different from problems involved in the utilization of conventional energy sources as mentioned by Berg (1976) and Iqbal (1983).

These problems are solved by the use of a passive solar energy system, the Trombe wall system, to heat poultry brooding pen. When applied to poultry brooding, the special merits of the passive solar energy include the fact that (Okpani, 2009)

- (1) it is not affected by non-availability of electricity or frequent power failures (which are very common feature in developing countries);
- (2) it creates a pollution-free environment conducive for poultry brooding,
- (3) it is free from fire hazards,
- (4) it produces birds of highly improved biological performance, and
- (5) the cost of energy for brooding is zero. Installed passive solar system can last for decades without supplementary energy supply and with little maintenance cost.

The rational design of a solar thermal system requires a knowledge of the dynamic interaction of all solar system components namely solar collection, thermal storage, fluid circulation, energy distribution and controls. Although essential and valuable experience can be gained by testing solar systems in the field, the generalization of experimental results and their applications in other locations can best be handled by a modeling approach. A very useful and accurate modeling is computer simulation. Results from computer simulation of solar systems are very helpful for system design since they allow one to learn about a complex interactions of a large number of variables in a short time whereas experiments are time consuming and costly (Kreith and Kreider, 1978).

The purpose of this work was to use computer simulation to determine for a whole year the hour by hour temperature of the back surface of a Trombe wall heated poultry brooding pen of thermal wall thicknesses 20cm, 25cm, 30cm, 35cm, 40cm, and 45cm. The range 20cm to 45cm is the normal range of thickness of the Trombe wall (Okpani, 2009). The thermal wall back surface temperature is of utmost importance because it has great effect on the brooding room temperature.

Since only monthly mean daily values of meteorological data are available calculations are performed for an average day (called characteristic day) each month.

## 2. Materials and Methods

For the purpose carrying out the thermal analysis of the Trombe wall system, various models have been used to represent the system. Examples include those of Shtrakov and Stoilov (2005), Okpani et al, 2008; Zrikem and Bilgen (1987), Bansal and Gour (1997), Knowles (1983), Duffin and Knowles (1981), Balcomb et al (1977) and Bilgen and Chaaban (1982), Duffin and Knowles (1985).

The modelling equations were derived from consideration of heat and mass balances for each component element of the system as depicted in Fig. 1 (Shtrakov and Stoilov, 2005).

In forming the equations, the following assumptions were made

1. The heat transfer in the massive wall is one dimensional. This is justified by the fact that there is very little vertical temperature variation in the wall (Shtrakov and Stoilov, 2005).
2. The heat transfer through the glass cover is at steady state whereas that through the wall is time dependent (Sehold and Clinton, 1979).
3. Material thermophysical properties are independent of temperature because of the small temperature variation involved (Zrikem and Bilgen, 1987).
4. All surfaces are considered as grey bodies with diffuse reflection and emission (Shtrakov and Stoilov, 2005).
5. Air is considered as a nonparticipating medium in radiation heat exchange (Kreith and Kreider, 1978).
6. Heat gain by the brooder room is only through the outer surface of the Trombe wall but heat loss is through all the surfaces of the room – floor, ceiling, walls, doors and windows. This results in a slight under simplification of the heat gain since there are actual heat gains through the building walls and windows and internal heat generation. But these are negligible compared to heat gain through the outer surface of the thermal wall.

Figure 1 shows the Trombe wall system heat transfer parameters. The energy balance equations for the components and parts are obtained as follows.

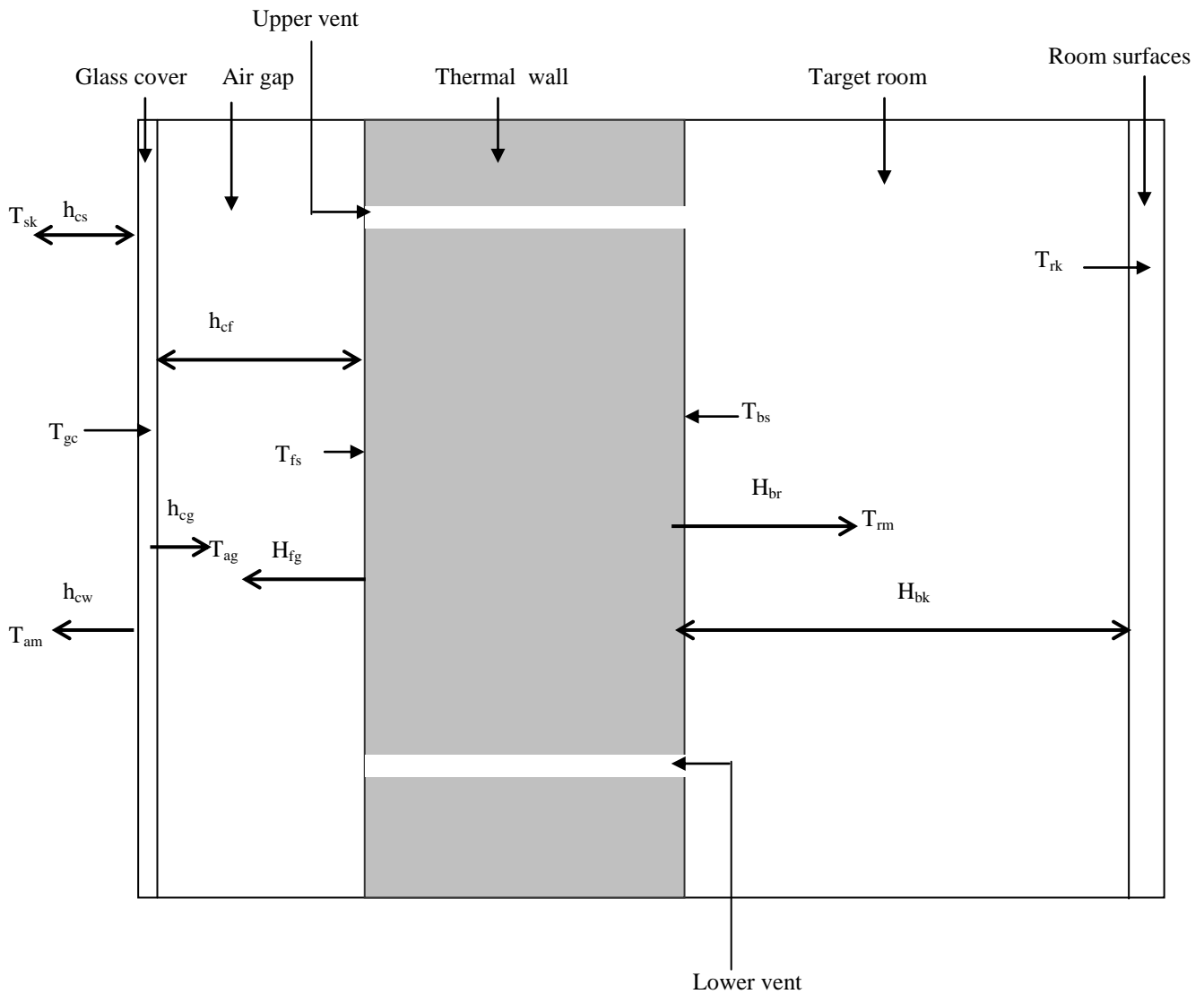


Fig. 1: Trombe wall system heat transfer parameters

### 2.1 The Glass Cover

The glass cover gains heat by absorption of some of the incident solar radiation and through radiation from the Trombe wall front surface. It loses heat through radiation to the sky and convection to ambient and the air gap. The energy balance equation is given by (Shtrakov and Stoilov, 2005; Ong, 1995a; Ong, 1995b):

$$\alpha_g I_{gc} + h_{cf} (T_{fs} - T_{gc}) = h_{cw} (T_{gc} - T_{am}) + h_{cg} (T_{gc} - T_{ag}) + h_{cs} (T_{gc} - T_{sk}) \quad (1)$$

where  $\alpha_g$  is the absorbance of the glass cover,  $I_{gc}$  is the hourly total radiation on the glass cover,  $h_{cf}$  is the radiation heat transfer coefficient between the glass cover and the Trombe wall front surface,  $h_{cw}$  is the wind convection heat transfer coefficient from the glass cover,  $h_{cg}$  is the convection heat transfer coefficient

from the glass cover to the air gap,  $h_{cs}$  is the radiation heat transfer coefficient between the glass cover and the sky,  $T_{fs}$  is the Trombe wall front surface temperature,  $T_{gc}$  is the glass cover temperature,  $T_{am}$  is the ambient temperature,  $T_{ag}$  is the air gap average temperature and  $T_{sk}$  is the sky temperature.

## 2.2 Air Gap Thermo Circulation

The air gap gains heat through convection from the glass cover and the Trombe wall front surface. It loses heat by exchanging hot air with cold air from the room. The energy balance equation is given by (Bansal and Gour, 1997; Bilgen and Chaaban, 1982)

$$\frac{\dot{m}c_{pa}T_{ag} - T_{rm}}{A_{rw}} = h_{cg}(T_{gc} - T_{ag}) + h_{fg}(T_{fs} - T_{ag}) \quad (2)$$

where  $\dot{m}$  is the mass flow rate of the air in the air gap,  $c_{pa}$  is the specific heat capacity of air at constant pressure,  $h_{fg}$  is the convection heat transfer coefficient from the Trombe wall outer surface to the air in the air gap,  $T_{rm}$  is the brooder room temperature and  $A_{rw}$  is the surface area of the Trombe wall.

## 2.3 Trombe wall bulk material

At any point  $x$  from the Trombe wall front surface heat transfer is by conduction according to Fourier's law.

This is given by (Shtrakov and Stoilov, 2005; Zrikem and Bilgen, 1987):

$$\alpha \frac{\partial^2 T_w}{\partial x^2} = \frac{\partial T_w}{\partial t} \quad (3)$$

where  $\alpha = k_w / \rho_w c_w$  is the thermal diffusivity,  $T_w$  is the temperature of the Trombe wall at a point  $x$  from the outer surface and at the time  $t$ ,  $k_w$ ,  $\rho_w$  and  $c_w$  are respectively the thermal conductivity, density, and specific heat capacity of the Trombe wall material.

## 2.4 Trombe wall front surface

The Trombe wall front surface gains heat by absorption of the incident solar radiation. It loses heat through conduction into the bulk material, radiation to the glass cover and convection to the air gap. The energy balance equation is given by (Shtrakov and Stoilov, 2005; Rogers and Mayhew, 1980):

$$-k_w \left( \frac{\partial T_w}{\partial x} \right)_{x=1} = I_w + h_{cf}(T_{gc} - T_{fs}) + h_{fg}(T_{ag} - T_{fs}) \quad (4)$$

where  $I_w$  is the solar radiation absorbed by the Trombe wall

## 2.5 Trombe wall back surface

The Trombe wall back surface gains heat by conduction from the bulk material. It loses heat through convection to the room and radiation to the surfaces of the room. The energy balance equation is given by (Shtrakov and Stoilov, 2005; Rogers and Mayhew, 1980):

$$-k_w \left( \frac{\partial T_w}{\partial x} \right)_{x=L} = h_{br} (T_{rm} - T_{bs}) + h_{bk} (T_{rk} - T_{bs}) \quad (5)$$

where  $h_{br}$  is the radiation heat transfer coefficient from the back surface of the wall to the brooder room,  $h_{bk}$  is the radiation heat transfer coefficient between the Trombe wall back surface and the surfaces of the room,  $T_{bs}$  is the Trombe wall back surface temperature,  $T_{rm}$  is the brooder room temperature,  $T_{rk}$  is the average temperature of the room's surfaces.

## 2.6 Target room

The total energy input to the room is the sum of the energy conducted through the wall,  $Q_{tw}$  and that transferred into the room through the upper vent by natural convection of air in the air gap,  $Q_{ag}$ . The heat losses consist of the transmission heat loss,  $Q_{tl}$  and the ventilation loss,  $Q_{vl}$ . The energy balance equation is given by (Bansal and Gour, 1997):

$$Q_{tw} + Q_{ag} = Q_{tl} + Q_{vl} \quad (6)$$

$Q_{tw}$ ,  $Q_{ag}$ ,  $Q_{tl}$ , and  $Q_{vl}$  are given respectively by

$$Q_{tw} = h_{cr} A_{tw} (T_{bs} - T_{rm}) \quad (7)$$

$$Q_{ag} = 2\dot{m} c_{pa} (T_{ag} - T_{rm}) \quad (8)$$

$$Q_{tl} = \sum U_i A_i (T_{rk} - T_{am}) \quad (9)$$

$$Q_{vl} = V_x \rho_a c_{pa} (T_{rm} - T_{am}) \quad (10)$$

where  $U_i$  is the U.value of the room surface  $i$  and  $A_i$  is the corresponding area,  $V_x$  is the volumetric exchange rate of the air flow,  $\rho_a$  is the density of air and  $c_{pa}$  is the specific heat capacity of air. The air exchange rate between the room and the environment include that which occurs actively through opened windows and doors and passively by infiltration through pores and cracks.

The active air exchange is used to manually regulate the temperature of the brooder room by opening the window for a period of time so that some of the hot air inside can be exchanged for cooler air from outside. The time  $t$  the window is left open is derived from a consideration heat balance between the exchanging fluids and is given by

$$t = \frac{V_{rm} (T_{ra} - T_{rd})}{V_w A_{wd} (T_{rd} - T_{am})} \quad (11)$$

where  $V_{rm}$  is the volume of air in the room,  $V_w$  is the velocity the air entering the room,  $A_{wd}$  is the area of the window,  $T_{ra}$  is the actual room temperature and  $T_{rd}$  is the desired room temperature.

For passive air exchange because of infiltration the American Society of Heating Refrigeration and Air conditioning Engineers(ASHARE) shows that the volume exchange rate in  $\text{m}^3\text{s}^{-1}$  for a second level fitting is given by (Igbal, 1983)

$$V_{xr} = \frac{(2L_{cd} + L_{cw})(a_{wd} + b_{wd}\rho_a V_w / 4)}{3600} \quad (12)$$

where  $L_{cd}$  is the door crack length,  $L_{cw}$  is the window crack length,  $\rho_a$  is the density of air,  $V_w$  is the velocity of wind and the infiltration function constants  $a_{wd}$  and  $b_{wd}$  are respectively  $1.3 \text{ m}^2 \text{ s}^{-1}$  and  $0.049 \text{ m}^4 \text{ s kg}^{-1}$ .

The design parameters and the meteorological data used are shown in Tables 1 and 2, respectively

A computer program is drawn to read the meteorological data for the representative day of the month and calculate for each wall thickness the hourly temperature of the thermal wall back surface using the design parameters and the modeling equations. The flow chart for the computer program is shown above in Figure 2

### 3. Results

Figures 3 to 14 show the hourly temperature of the thermal wall back surface for Trombe wall thicknesses of 20cm, 25cm, 30cm, 35cm, 40cm and 45cm for the characteristic day in the months of January to December respectively. The hourly variation of the ambient temperature is included in each case for comparison. Table 3 shows the average hourly temperature of the thermal wall back surface for Trombe wall thicknesses of 20cm, 25cm, 30cm, 35cm, 40cm and 45cm for the characteristic day in the months of January to December. The average hourly ambient temperature is also included for comparison.

### 4. Discussion

From Figures 3 to 14, we see that, for all the thermal wall thicknesses the Trombe wall back surface temperature and hence the brooder room temperature are always higher than the ambient temperature. They also have comparatively very small daily swings.

A careful examination of the graphs shows that the daily swing of the hourly temperature decreases as the wall thickness increases from 20cm to 45cm for all the months of the year.

From Table 3, it can be observed that the Trombe wall back surface hourly temperature has the lowest average value of  $34.58^\circ\text{C}$  in August for the 45 cm thick wall and the highest average value of  $45.13^\circ\text{C}$  in February for the 20 cm thick wall. The lowest and highest values of the ambient temperature occur in the same months and they are  $27.30^\circ\text{C}$  and  $31.80^\circ\text{C}$  respectively.

These figures show clearly that it is possible to create an environment heated with solar energy but independent of fluctuations of weather. This is the ideal condition for poultry brooding. The temperature comfort zones for poultry brooding are  $35^\circ\text{C}$  for week 1,  $31 - 29^\circ\text{C}$  for week 2,  $29 - 27^\circ\text{C}$  for week 3 and  $25^\circ\text{C}$  (ambient) from week 4 onwards. (Okpani, 2009; Okpani and Nnabuchi, 2009)

Hence these findings show that the optimum brooding temperature requirement can be met. This is achieved by opening the window for a period of time so that the hot air inside can be exchanged with the cooler air outside. This time is a function of the actual room temperature, the desired room temperature, the ambient temperature and area of the window. The values obtained here are close to those obtained by Echiegu(1986) and Okonkwo(1993a).

Table 1 : Design parameters

Description	Value
Room floor area, A <sub>fl</sub>	11.925 m <sup>2</sup>
Room walls area, A <sub>wl</sub>	23.520 m <sup>2</sup>
Room roof area, A <sub>rf</sub>	11.925 m <sup>2</sup>
Room total surface area, A <sub>rm</sub>	47.370 m <sup>2</sup>
Floor U-value, U <sub>fl</sub>	0.72 Wm <sup>-2</sup> K <sup>-1</sup>
Wall U-value, U <sub>wl</sub>	2.92 Wm <sup>-2</sup> K <sup>-1</sup>
Roof U-value, U <sub>rf</sub>	0.115 Wm <sup>-2</sup> K <sup>-1</sup>
Room mean U-value, U <sub>rm</sub>	1.660 Wm <sup>-2</sup> K <sup>-1</sup>
Door crack length, L <sub>cd</sub>	4.50 m
Window crack length, L <sub>cw</sub>	2.70 m
Door area, A <sub>dr</sub>	1.190 m <sup>2</sup>
Window area, A <sub>wd</sub>	0.455 m <sup>2</sup>
Trombe wall surface area, A <sub>tw</sub>	6.30 m <sup>2</sup>
Trombe wall height, H <sub>tw</sub>	1.40 m
Trombe wall thickness, D <sub>tw</sub>	Variable: 0.20m, 0.25m, 0.30m, 0.35m, 0.40m, 0.45m
Trombe wall specific heat capacity, c <sub>w</sub>	880 Jkg <sup>-1</sup> K <sup>-1</sup>
Trombe wall density, ρ <sub>w</sub>	2720 kg m <sup>-3</sup>
Trombe wall thermal conductivity, κ <sub>w</sub>	1.41 Wm <sup>-1</sup> K <sup>-1</sup>

---

Trombe wall surface coating absorbance, $\alpha_{ss}$	0.87
Trombe wall outer surface IR emittance, $\epsilon_{fs}$	0.09
Trombe wall inner surface IR emittance, $\epsilon_{bs}$	0.88
Trombe wall upper vent area, $A_{uv}$	0.096 m <sup>2</sup>
Distance between upper and lower vents, $D_v$	1.155 m
Air gap width, $W_{ag}$	0.050 m
Glass cover short wave absorbance, $\alpha_{gc}$	0.065
Glass cover IR emittance, $\epsilon_{gc}$	0.941
Glass cover short wave transmittance, $\tau_{gc}$	0.896
Ground reflectance, $\rho_{gr}$	0.35
Air viscosity at 300K, $\mu_a$	1.983 x 10 <sup>-5</sup> kgm <sup>-1</sup>
Air density at 300K, $\rho_a$	1.7774 kg <sup>-3</sup>
Air specific heat capacity at constant pressure, $c_{pa}$	1005.7 Jkg <sup>-1</sup> K <sup>-1</sup>
Air conductivity, $\kappa_a$	0.0262 Wm <sup>-1</sup> K <sup>-1</sup>
Space interval, $\Delta x$	0.02 m
Time interval, $\Delta t$	3600 s
Tilt angle, $\beta$	90° ( $\pi/2$ rads)
Latitude(Enugu), $\phi$	6.47 ° N

---



Table 2 : Meteorological data

Month	<sup>a</sup> Monthly mean daily solar radiation on a horizontal surface (MJ m <sup>-2</sup> day <sup>-1</sup> )	<sup>a</sup> Monthly mean wind velocity (ms <sup>-1</sup> )	<sup>b</sup> Monthly mean daily maximum temperatures (° C )	<sup>b</sup> Monthly mean daily minimum temperatures ( ° C )	<sup>b</sup> Monthly mean daily average temperatures ( ° C )	Characteristic <sup>c</sup> day number for the month
JAN	16.0992	2.81	34.5	24.6	29.0	17
FEB	17.6508	3.03	36.7	28.8	31.8	45
MAR	18.0468	3.37	35.1	26.6	31.7	74
APR	18.9316	3.37	34.6	27.2	30.9	105
MAY	17.9316	3.05	33.8	25.9	29.6	135
JUN	15.5952	2.95	32.7	25.3	29.0	161
JUL	14.2344	3.12	30.9	24.9	27.8	199
AUG	14.3748	3.28	30.0	24.4	27.3	239
SEP	15.2424	3.75	31.3	24.4	27.9	261
OCT	14.5800	2.50	31.8	24.6	28.3	292
NOV	17.2980	2.39	33.8	26.0	29.8	322
DEC	16.4556	2.87	34.0	25.3	29.6	347

<sup>a</sup> From *Renewable Energy for Rural Industrialization and Development in Nigeria*, Abuja: UNIDO (Dec. 2003).

<sup>b</sup> From the records of the Nigerian Meteorological Agency, South Eastern Zone, Akanu Ibiam International Airport, Enugu.

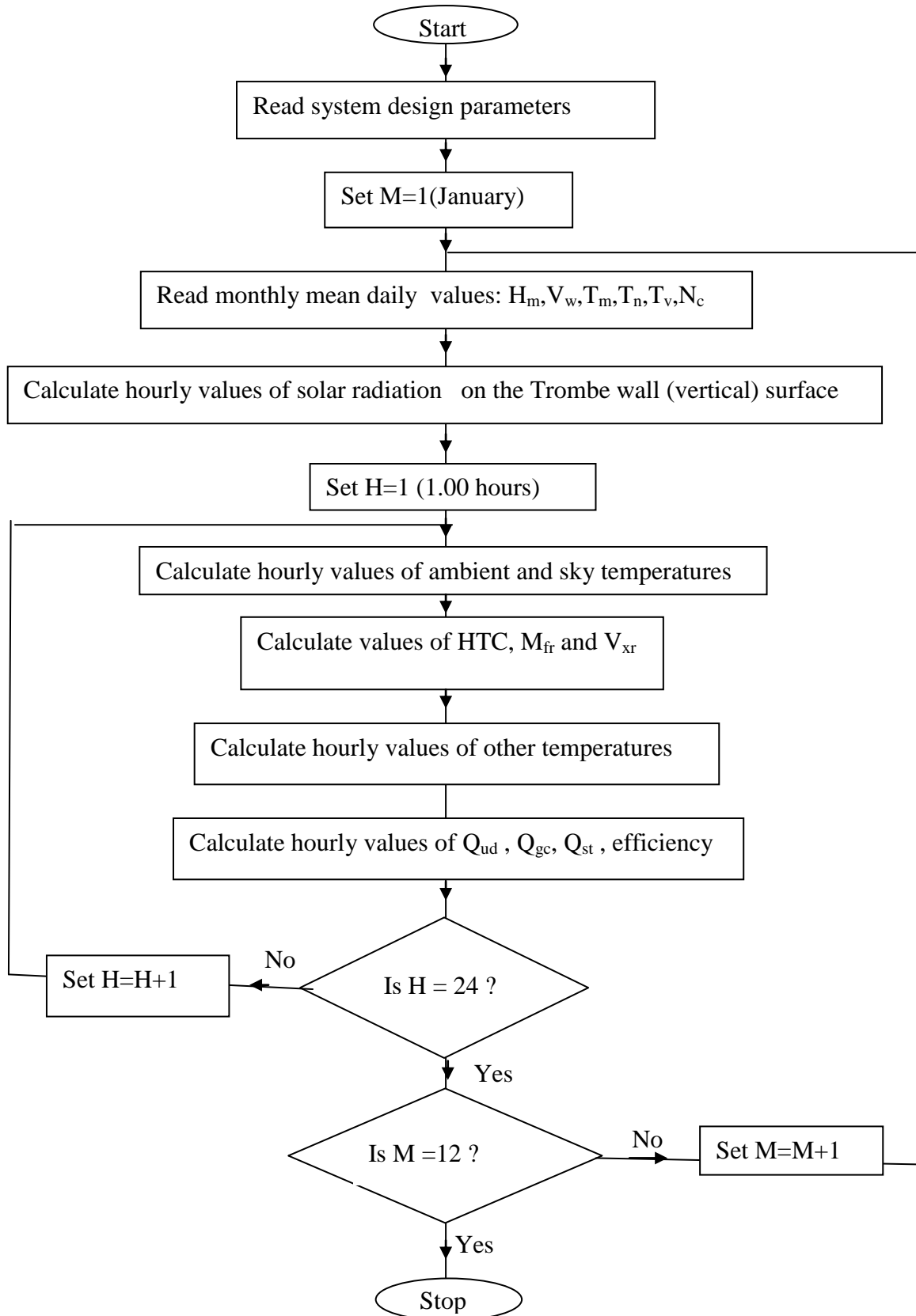
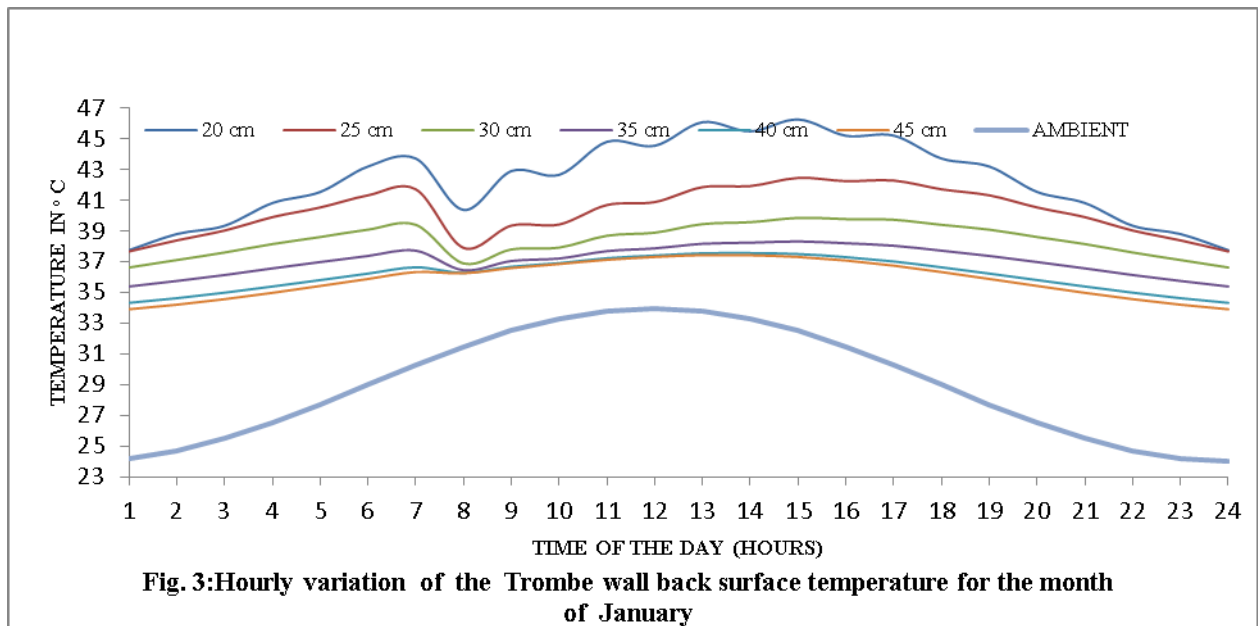
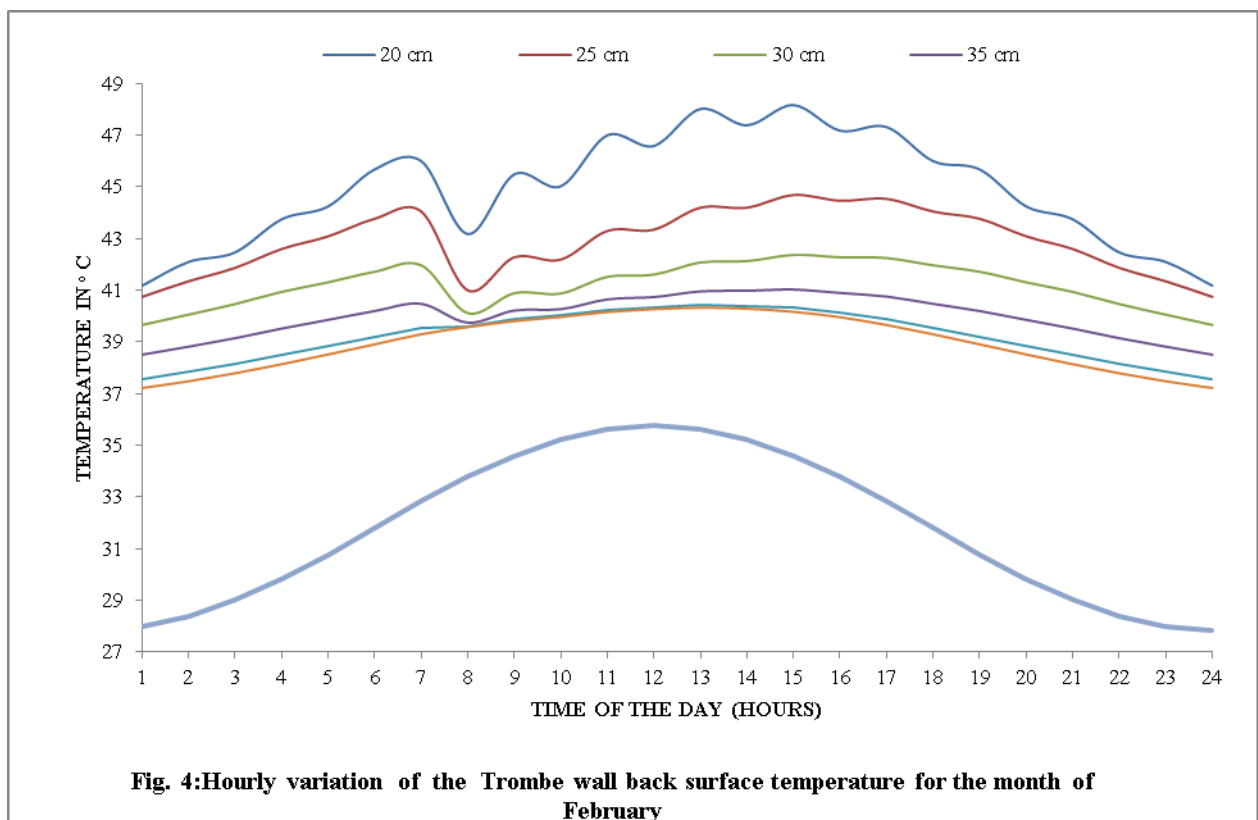


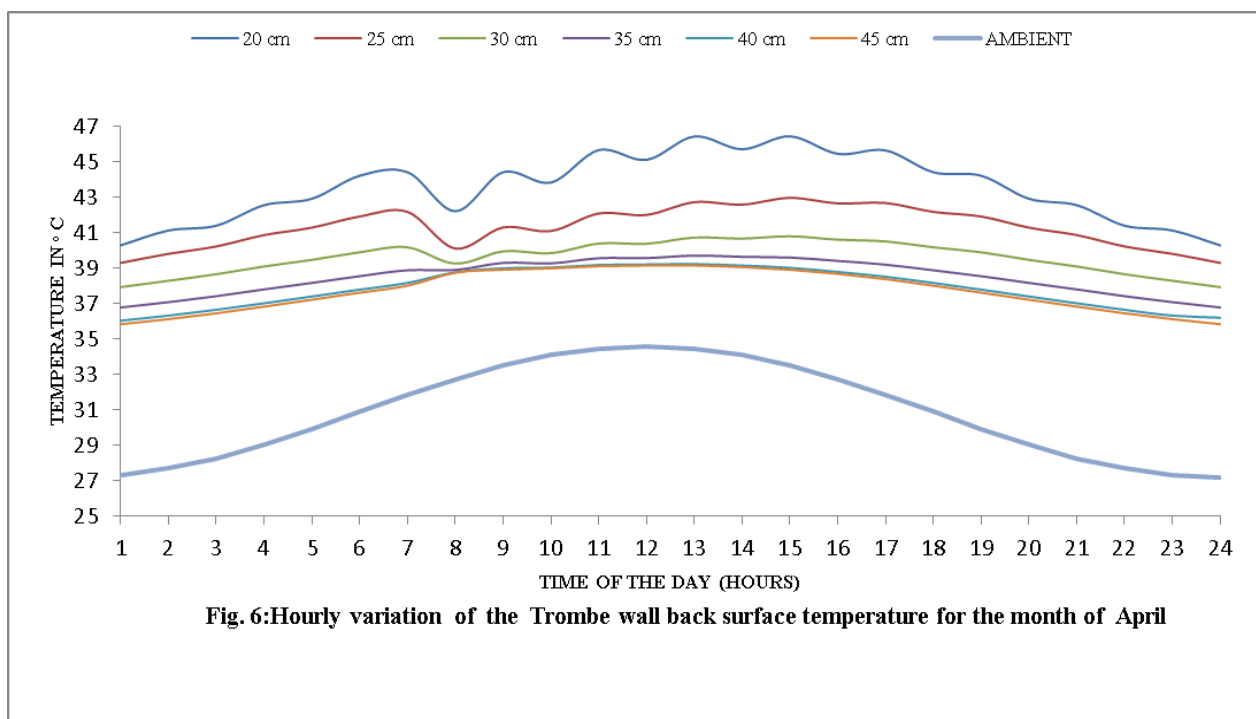
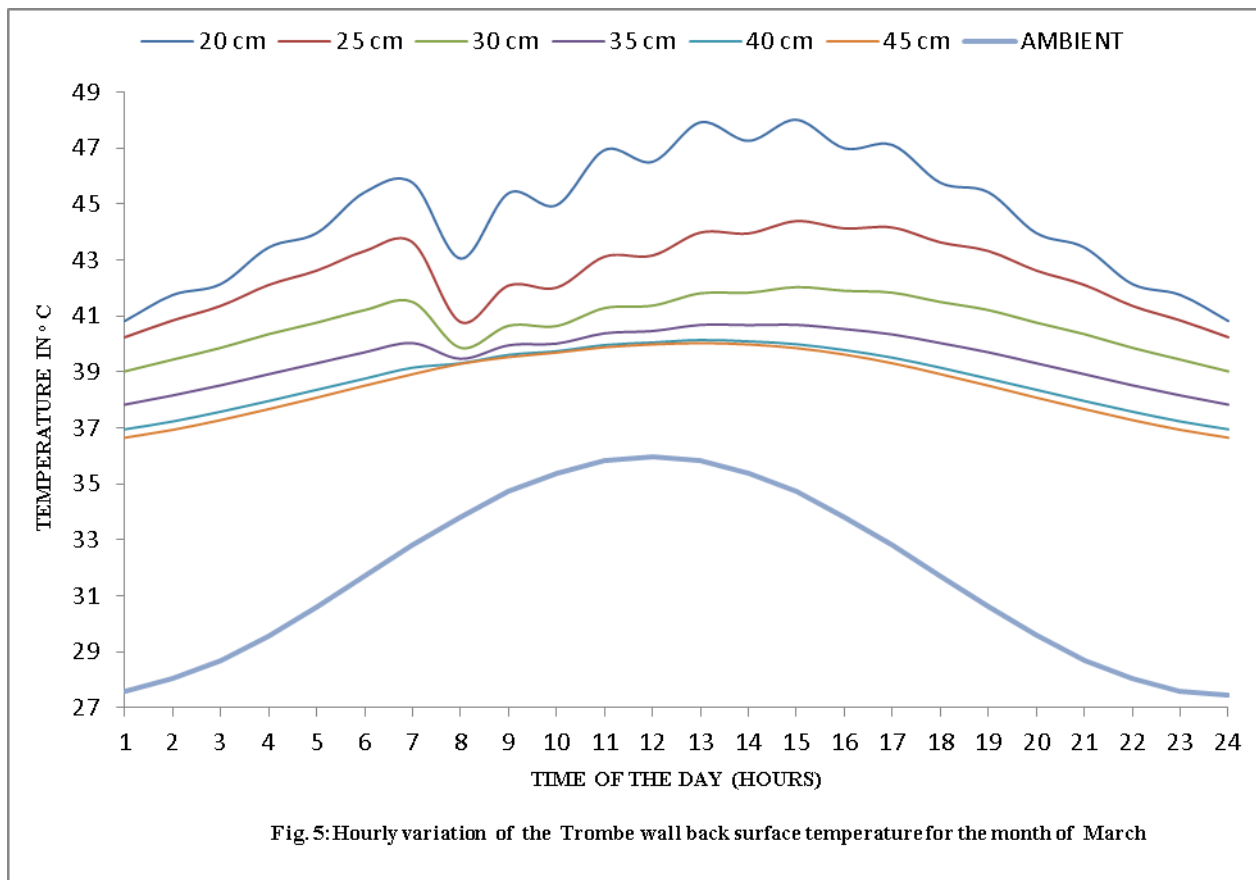
Fig. 2: Flow Chart for the Computer Program

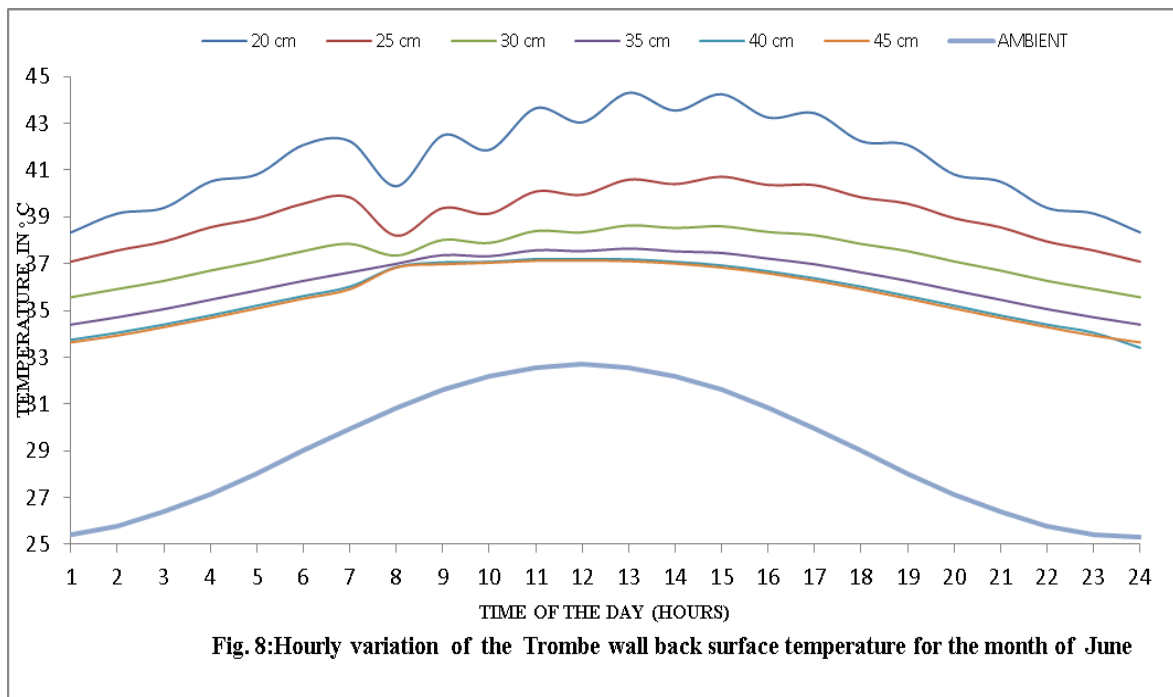


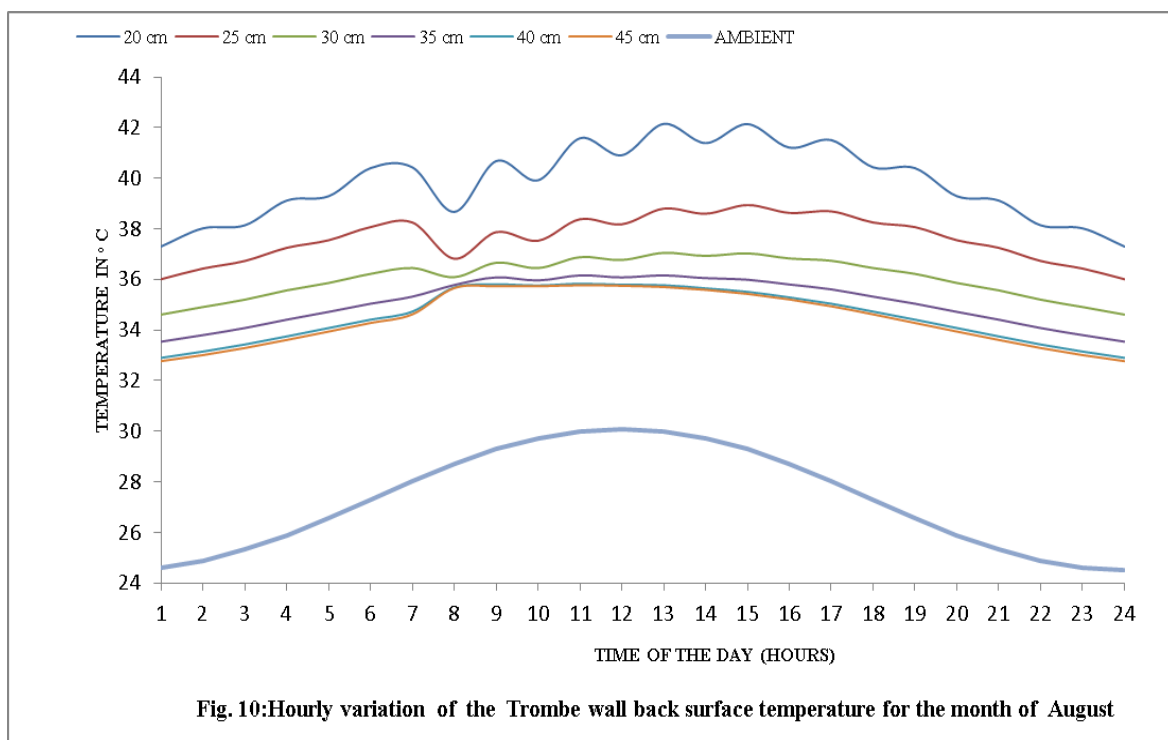
**Fig. 3:Hourly variation of the Trombe wall back surface temperature for the month of January**

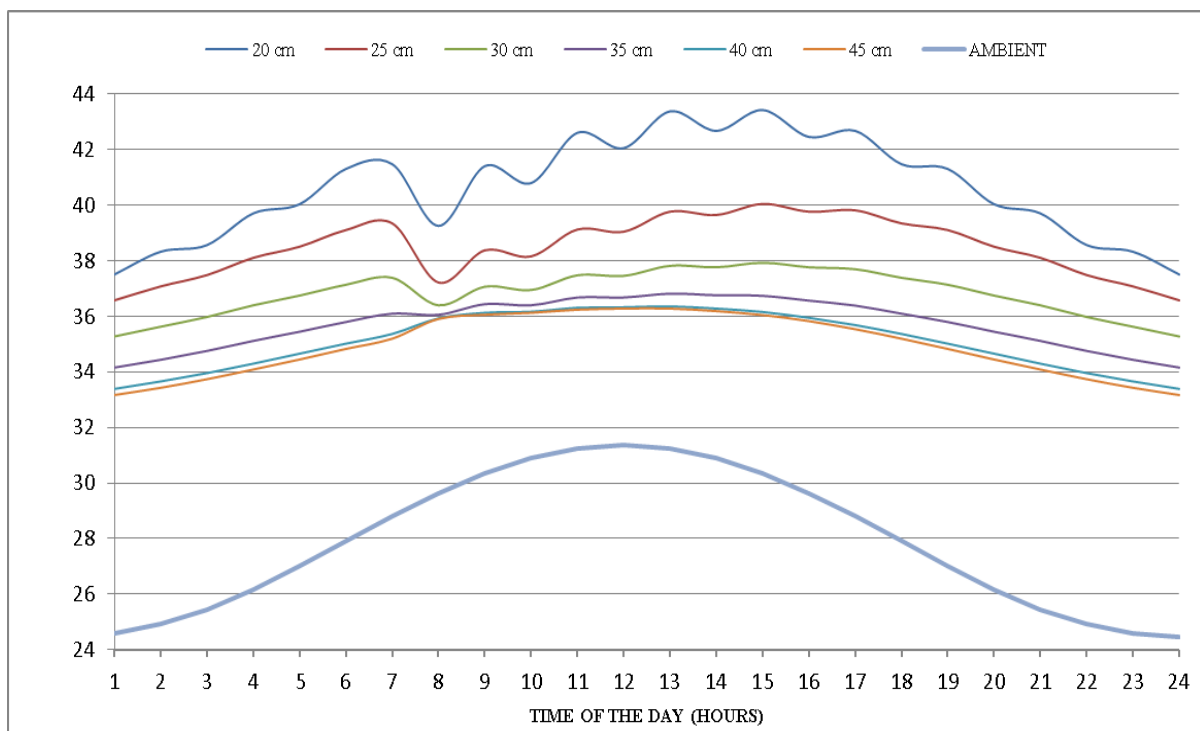


**Fig. 4:Hourly variation of the Trombe wall back surface temperature for the month of February**

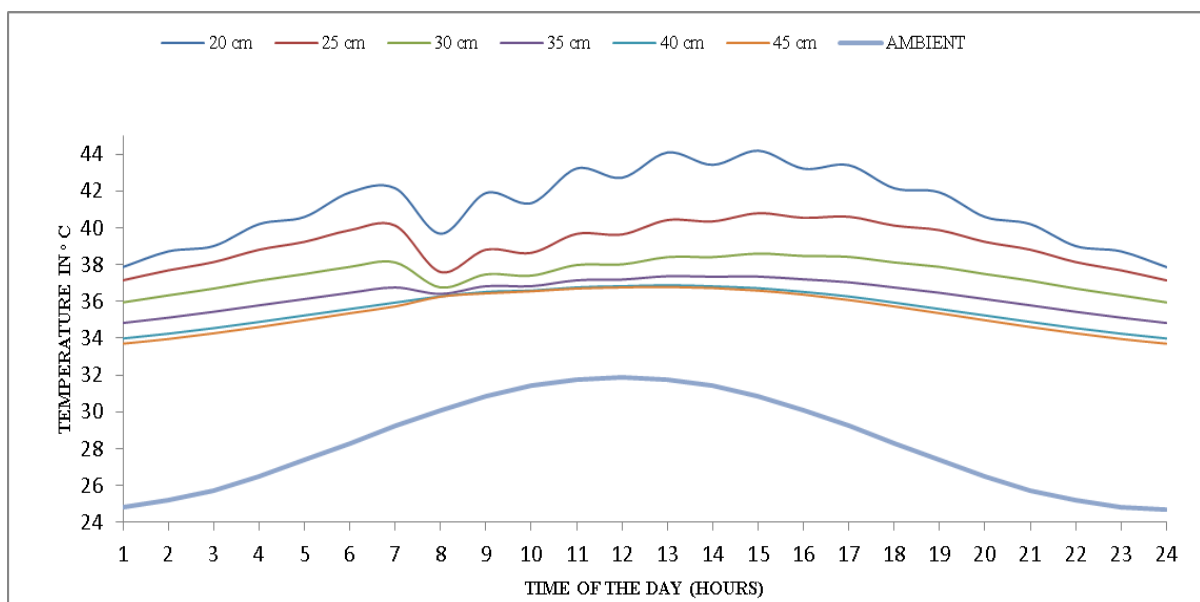








**Fig. 11:Hourly variation of the Trombe wall back surface temperature for the month of September**



**Fig. 12:Hourly variation of the Trombe wall back surface temperature for the month of October**

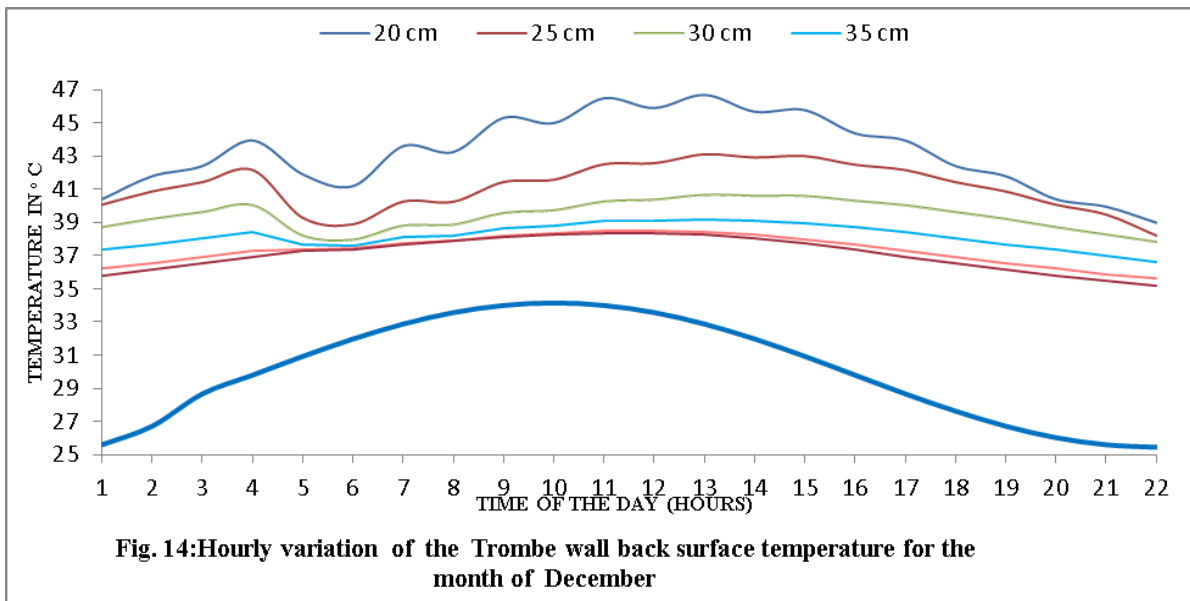
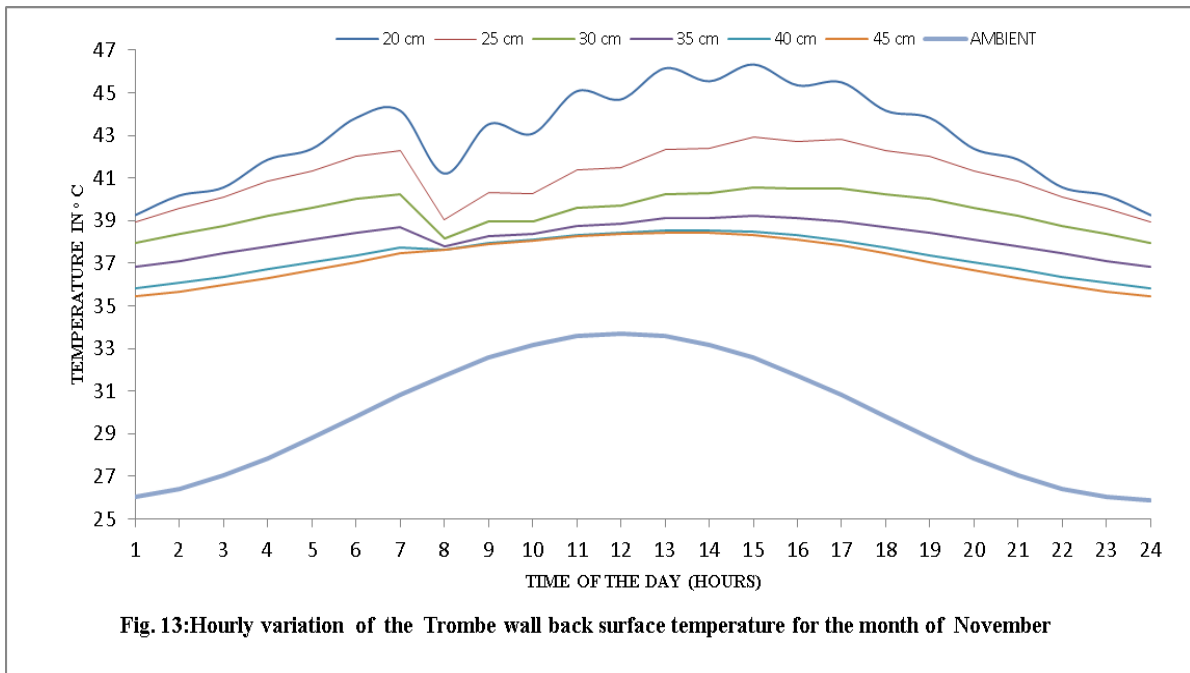




Table 3 : Average hourly temperature of the thermal wall back surface for Trombe wall thicknesses of 20cm, 25cm, 30cm, 35cm, 40cm and 45cm for the characteristic day in the months of January to December

MONTH	20 cm	25 cm	30 cm	35 cm	40 cm	45 cm	Ambient temperature
JAN	42.59	40.45	38.54	37.17	36.29	36.02	29.00
FEB	45.13	43.05	41.30	40.09	39.32	39.10	31.80
MAR	44.92	42.68	40.86	39.64	38.91	38.71	31.70
APR	43.81	41.48	39.74	38.64	38.04	37.9	30.90
MAY	42.39	39.93	38.13	37.02	36.44	36.33	29.60
JUN	41.71	39.25	37.49	36.42	35.87	35.795	29.00
JUL	40.43	38.08	36.44	35.46	34.98	34.89	27.80
AUG	40.01	37.75	36.16	35.18	34.68	34.58	27.30
SEP	40.85	38.62	36.93	35.84	35.22	35.07	27.90
OCT	41.43	39.28	37.58	36.44	35.76	35.50	28.30
NOV	43.24	41.24	39.52	38.29	37.49	37.25	29.80
DEC	43.23	41.13	39.41	38.17	37.35	37.09	29.60

This research work undertaken here is not just on the use of solar energy system but on the use of a passive solar energy system, the Trombe wall system, whose advantages include the following:

1. The system is easy to build and requires little special knowledge to construct since it relies so closely on traditional methods of building construction.
2. The initial cost is relatively low since the system is simple and the building materials are readily available.
3. The system is very reliable and easy to maintain because of the absence of complex mechanical equipment as valves, fans, pumps, electric control devices, etc.
4. The system has inherently high collection efficiency since it normally operates with low temperature rises in the collector system.
5. It is easy for the users of the system to understand and operate because there are no complex mechanical parts.
6. A passive solar system is, in its basic form, independent of other energy supplies in operation. This is because there are no pumps, fans etc, relying on electricity. Hence the system is not subject to energy supply disturbances

### 5. Conclusion

The major finding of this study is that the thickness of the thermal wall has significant effect on the temperature of back surface. For a thermal wall of given thickness the temperature of back surface of the wall is almost constant irrespective of weather conditions. This helps to maintain the brooder room temperature at any desired value which is usually above ambient for proper chick brooding.

Hence the Trombe wall system can be used to avert the inefficient and inappropriate production technology employed by the farmers to heat the chick brooding room and to solve the problems that fraught large-scale utilization of solar energy due to its limitations.

### Acknowledgement

The author wishes to express his gratitude to the management and staff of the Nigerian Meteorological Agency South East Zone, Akanu Ibiam International Airport Enugu, for their cooperation in willingly giving him access to their records.

## References

- Agbo, A.D. (2004). "Venturing into Poultry Business on Micro – Level". *National Agriculture Focus*. 1(5): 1.
- Bansal, N.K. and Gour, B.C. (1997). "Application of U and g Values for Sizing Passive Heating Concepts". *Solar Energy*. 57(5): 361-372.
- Berg, C.A. (1976). "Potential for Energy Conservation in Industry". *Annual Review of Energy*. 1: 519 – 534.
- Bilgen, E. and Chaaban, M. (1982). "Solar Heating- Ventilating System Using a Solar Chimney". *Solar Energy*. 28(3): 227-233.
- Drew, M.S. and Selvage, R.B.C. (1979). "Solar Heating System Performance Estimation Using Sinusoidal Inputs". *Solar Energy*. 23(5):435-442.
- Iqbal, M. 1983. *Introduction to Solar Radiation*. Academy Press: New York, NY. 215-275.
- Kreith, F. and Kreider, J.F. (1978). *Principles of Solar Engineering*. McGraw-Hill: New York, NY. 85 – 193.
- Morgan, C.G. (1962). "Solar Energy, Source of". In: *Encyclopedia of Physics*. Pergamon Press: Oxford. 6, 521 – 522.
- Morrison, D., Wolf, S., and Franknoi, A. (1995). *Exploring the Universe. 7th edn*. Saunders College Publishing: Philadelphia, PA.
- Nicholson, I. 1999. *Unfolding Our Universe*. Cambridge University Press: Cambridge. 161-200.
- Okonkwo, W. I. (1993). "Performance Evaluation of a Medium Scale Passive Solar Energy Brooding System". *Nigerian Journal of Solar Energy*. 12: 51 – 60.
- Okonkwo, W.I and Aguwamba, J.C. (1997). "Socio-Economic Impact of Solar Energy Brooding System". *Proceedings of the International Conference on Power Systems Operation and Planning*. 276 – 280.
- Okpani, P.E. 2009. "Design, Computer Simulation, and Characterization of a Large Scale Poultry Brooding Pen Heated by Trombe Wall". Ph.D. Thesis. Department of Industrial Physics and Electronics, Ebonyi State University, Abakaliki, Nigeria.
- Okpani, P.E. and M.N. Nnabuchi. (2009). "Determination of Hourly Temperature Variation in the Elements of a Poultry Brooder Pen Heated by Trombe Wall". *Pacific Journal of Science and Technology*. 10(2):905-918.
- Olaniyan, T. (2004a). "Heat Stress in Broilers". *National Agriculture Focus*. 1(5):8.
- Olaniyan, T. (2004b). "Common Poultry Disease". *National Agriculture Digest*. 5: 11.
- Ong, K.S. (1995a). "Thermal Performance of Solar Air Heaters - Mathematical Model and Solution Procedure". *Solar Energy*. 55(2):93-109.
- Ong, K.S. (1995b). "Thermal Performance of Solar Air Heaters – Experimental Correlation". *Solar Energy*. 55(3): 209-220.
- Rogers, C.F.C. and Mayhew, Y.R. 1980. *Engineering Thermodynamics- Work and Heat Transfer*. Longman Group Ltd.: London. 495 – 502.
- Suri, R.K., Ayyash, S., and Al-madani, K. (1983). "Performance Analysis of Solar Space Heating System". *Solar Energy*. 31(2):145-151.
- Zrikem, Z. and Bilgen, F. (1987). "Theoretical Study of a Composite Trombe-Michael Wall Solar Collector System". *Solar Energy*. 39(5): 409-419.

## Biodata of the Author

Dr. Pius Ezeali Okpani was born on October 15, 1957 in Agbogo, Orrah, Ozizza, in Afikpo North Local Government Area of Ebonyi State, Nigeria. He obtained First Class Honours B.Sc degree in Electrical and Electronic Engineering from Obafemi Awolowo University, Ile-Ife in August, 1985, M.Sc Degree in Physics (Solar Energy) from Usmanu Danfodiyo University, Sokoto in December, 2000 and Ph.D in Physics (Solar Energy) from Ebonyi State University, Abakaliki in February, 2009. He is a member of a number of professional bodies such as Solar Energy Society of Nigeria (May, 1988), The Nigerian Society Of Engineers (November, 1994), Nigerian Institute Of Physics (August, 2005). He also a registered Electrical Engineer with COREN (August, 2002). His research interests include Solar Energy Physics particularly the use of passive solar energy in poultry brooding.

This academic article was published by The International Institute for Science, Technology and Education (IISTE). The IISTE is a pioneer in the Open Access Publishing service based in the U.S. and Europe. The aim of the institute is Accelerating Global Knowledge Sharing.

More information about the publisher can be found in the IISTE's homepage:

<http://www.iiste.org>

## CALL FOR JOURNAL PAPERS

The IISTE is currently hosting more than 30 peer-reviewed academic journals and collaborating with academic institutions around the world. There's no deadline for submission. **Prospective authors of IISTE journals can find the submission instruction on the following page:** <http://www.iiste.org/journals/> The IISTE editorial team promises to review and publish all the qualified submissions in a **fast** manner. All the journals articles are available online to the readers all over the world without financial, legal, or technical barriers other than those inseparable from gaining access to the internet itself. Printed version of the journals is also available upon request of readers and authors.

## MORE RESOURCES

Book publication information: <http://www.iiste.org/book/>

Recent conferences: <http://www.iiste.org/conference/>

## IISTE Knowledge Sharing Partners

EBSCO, Index Copernicus, Ulrich's Periodicals Directory, JournalTOCS, PKP Open Archives Harvester, Bielefeld Academic Search Engine, Elektronische Zeitschriftenbibliothek EZB, Open J-Gate, OCLC WorldCat, Universe Digital Library, NewJour, Google Scholar

